



# f22: Southside Camera Club Newsletter

## July 2015

Club Meeting – 7:30 pm on Thursday 9 July 2015 at the Belconnen Soccer Club,  
cnr. Belconnen Way and Springvale Drive, Hawker

### Events

#### Monthly Meeting Topics for 2015

| Meeting Date | Topic                          | Presenter(s)   | Notes                               |
|--------------|--------------------------------|----------------|-------------------------------------|
| 9 July       | PhotoAccess                    | Jan Falsone    |                                     |
| 13 August    | Presentation on a photographer | Malcolm Watson |                                     |
| 10 September | Kayell                         |                |                                     |
| 8 October    |                                |                |                                     |
| 12 November  | Presentation on a photographer |                |                                     |
| 10 December  | AGM and show and tell          |                | Bring your best photos for the year |

### June Meeting Report

This was our first ever meeting at our new premises, the Belconnen Soccer Club in Hawker. In my humble opinion at least, the room was a good size, comfortable and adequate for our needs.

Rob spoke on a number of topics including the activities planned for June such as the walkabout to Isa St Fyshwick on June 18, DigSig scheduled for June 25, and the Elinchrome Lighting Workshops organised by Paul Livingston for June 27.

Most notably, Rob instituted a discussion about the pros and cons of whether the club should take over organising the Australian Interstate Photographic Competition for the ACT. PhotoAccess is not interested in helping to organise entries from the ACT and there was some talk that the continuation of the whole competition may be in doubt. Paul Livingston pointed out that if the club did take on this responsibility, at some stage in the future we would have to organise and host the event for the whole of Australia. With no more than 4 to 5 club members interested in entering the competition, and with most members (including myself) appearing to be indifferent to whether it goes ahead or not, the likelihood of this club enthusiastically taking over from the Canberra Photographic Society seems remote.

The presentation was by Paul Livingston and Rod Burgess on the topic of critiquing photographs.

### **Treasurer's Report**

Iain Cole reported that at the end of April the club held \$3,467.38.

### **Membership Subscriptions are due in August**

Here is a message from Iain.

Hello everybody,

The Southside Camera Club annual membership subscriptions are due from 1 August 2015. Single membership is \$20-00 and a family membership is \$30-00. Subscriptions can be either paid at the next club meeting or they can be paid electronically to the club's bank account. If you wish to pay directly to the club's account the details are:

BSB: 805022

A/C: 03483070

Name: Southside Camera Club.

**NOTE: Please make sure that your surname is in the payment description field.**

Members who pay their subscriptions electronically will receive an email from me when it is received.

Regards,

Iain Cole

Treasurer

0474 140 925

### **Rob's Rant**

We spent a fair bit of time discussing options for our club to send entries to the Australian Interstate Photographic Competition (AIPC) this year following the

Canberra Photographic Society's decision to not enter. Perhaps I spent too much time on this issue because, apart from my own intention to enter, only one other person has indicated an interest. Please let me know if you intend to enter this competition (the rules are attached to an email I sent out a few weeks ago). If there aren't enough entries I will contact the organisers and advise them that we don't intend to enter this year.

Thursday 9 July, our next meeting, is the second main meeting for our club at the Belconnen Football Club. Our first meeting was a bit overwhelmed by the large gathering in the dining room next to our meeting room. Fortunately, the dining room has been relatively quiet for the two DIGSIG meetings held here. Since these meetings I have been able to experiment with the lights with the aim of finding a combination of switches that turn off the lights above the screen but leave a moderate light in the seating area. Sadly, this can only be done by turning off a bank of lights that extends into the dining room. The restaurant people weren't keen to plunge their patrons into darkness, but, given that they close at 9:00 pm, we might be able to turn the appropriate lights off during "show and tell" after 9:00pm.

I would like to get some feedback, positive and negative, about your experiences of meeting at Belconnen.

At the DIGSIG last month, in the absence of Dennis Lovatt, the regular convenor, I showed two videos prepared by Les Walkling (Les ran the Landscape Photography Workshop that I attended in early May this year at PhotoAccess). Apart from wanting to give a plug for PhotoAccess, they highlighted to me the Ansell Adams adage about the negative and the print - "The negative is comparable to the composer's score and the print to its performance". Les Walkling has significant skills as both a photographer and teacher and in the two videos highlights how using the digital tools available to us we can take the image captured by a camera (the score) and transform it into the image that we want to convey to our audience (our performance).

For me, these videos highlight how the tools in Lightroom and Photoshop complement each other. There are lots of adjustments that are best done in LR and some that are best done in PS. I think I am reasonably adept in using Lightroom but I am only taking the first steps on the journey through Photoshop.

Finally, I acted as an assistant to Paul Livingston for his Studio Flash Workshops on Saturday 27 June. The workshops were aimed at showing those who attended how easy it is to set up, use and put away the clubs Elinchrom Studio Flash set. The measure of success is for members to use this valuable resource. To my knowledge, they have only been borrowed a couple of times in the past 12 months and one of them was me. Paul Livingston (paullivingston@mac.com) is the current custodian of these lights and wants to see more people using them. Please contact Paul to make a booking. You will be amazed at the results you get from using a good set of studio flash lights.

Cheers  
Rob

## Monthly Excursions for 2015

| Date                  | Activity                            | Organised by | Notes                        |
|-----------------------|-------------------------------------|--------------|------------------------------|
| <b>August</b>         | Architectural Photography New Acton | Warren Hicks | Combine with a challenge?    |
| <b>September</b>      | Cowra Japanese Gardens              |              | Also Canola Flowering        |
| <b>October</b>        | Night Photography                   |              | National Museum of Australia |
| <b>14-15 November</b> | Guthega                             | Rob Wignell  |                              |

## Walkabout Group

### walkabout Group Calendar 2015

If any member wants to organise a walkabout, then we are keen to publicise it in order to get the maximum turnout.

| Date              | Location                            | Organised by    | Level           |
|-------------------|-------------------------------------|-----------------|-----------------|
| <b>18 June</b>    | Isa St Fyshwick                     | Rob Wignell     | Easy            |
| <b>16 July</b>    | Botanic Gardens                     | Denis Walsh     | Medium          |
| <b>20 August</b>  | A local homestead (eg Lanyon)       | Mike Gauntlett  | Easy            |
| <b>3 Sept</b>     | Honeysuckle Creek / Booroomba Rocks | Denis Walsh     | Adventurous     |
| <b>17 Sept</b>    | Warri Bridge / Braidwood            | Bev Baley       | Easy/<br>Medium |
| <b>15 October</b> | Michelago, Bredbo, Captains Flat    | Laurie Westcott | Easy            |
| <b>5 Nov</b>      | Mulligans Flat                      | Laurie Westcott | Adventurous     |
| <b>19 Nov</b>     | Tidbinbilla                         |                 | Easy/<br>Medium |

## Excursion Reports

### June Walkabout to Pirie Street, Fyshwick - by Rob Wignell

The planning for this walkabout included a crisp cool morning with clear winter sunlight highlighting the bright colours of the Pirie Street buildings. Like visualising a shot in golf, it usually turns out different.

On Thursday 18 June some hardy Walkabouts gathered in Pirie Street, Fyshwick, on a cold, grey, drizzly sort of day. Fortunately, some of the shops and warehouses had agreed to allow our intrepid band into their (sadly not very busy) shops to take photos of their wares. We spent considerable time in The Cyclery, a bicycle show room and the Mont Adventure Equipment store.

Other stores had also agreed to our intrusions but the call of coffee curtailed further adventure into the office furniture warehouses and Uneke Furniture which features high quality wooden furniture manufactured in Bungendore.

Coffee and conversation both set a high standard.

The next Walkabout is to the National Botanic Gardens on Thursday 16 July. Denis Walsh is convenor.

Here are some photos supplied by Rob.







## F22 Gallery

### Denis Walsh

Denis has contributed some great photos, but without any commentary. Never mind, I think the photos can stand on their own.







This photo must be a candidate for one of the best of the year.













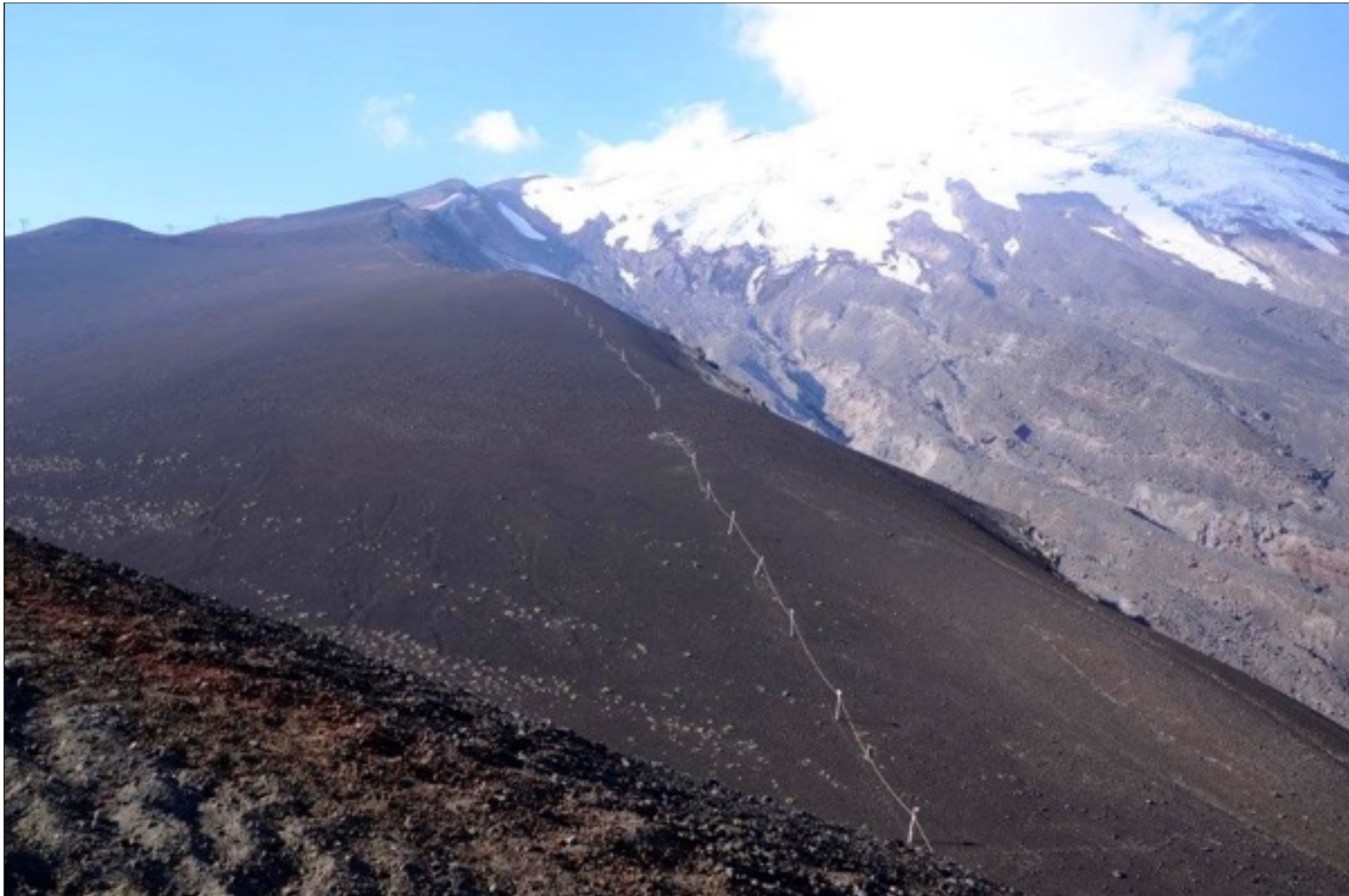












## DigSig

I'm sorry, but I have no news of what is planned for DigSig this month. If it goes ahead it should be held on Thursday 23 July.

## Software Buddies

If you need help with using post production software, a few club members have volunteered to try and help sort out problems using Photoshop Elements, Photoshop Lightroom, Photoshop Creative Suite and Apple Aperture. The contacts are:

Photoshop Elements: Peter Bliss at [bliss.images@yahoo.com.au](mailto:bliss.images@yahoo.com.au)

Photoshop Lightroom: Peter Bliss at [bliss.images@yahoo.com.au](mailto:bliss.images@yahoo.com.au)

Photoshop Creative Suite: Graeme Kruse at [gkruse@bigpond.net.au](mailto:gkruse@bigpond.net.au)

Apple Aperture: Claude Morson at [claudemorson@gmail.com](mailto:claudemorson@gmail.com)

### Club Websites

<http://www.southsidecameraclub.com/>

flickr: <http://www.flickr.com/groups/southsidecc/>

Facebook: <https://www.facebook.com/groups/470954196380232/>

## News

### Current and forthcoming exhibitions

#### National Portrait Gallery

#### Life and Time

##### Portraits by Rod McNicol

From Saturday 20 June until Sunday 23 August 2015

Born in 1946, Australian photographer Rod McNicol has consistently analysed the passing of time through the evidence of the photographic portrait. At once confronting and tender, McNicol's portrait photographs are bold and intimate. McNicol founded The Photographers Gallery in South Yarra Melbourne in 1975. He was awarded the National Photographic Portrait Prize 2012 for his portrait of

Indigenous actor Jack Charles. This exhibition is developed in partnership with the Monash Gallery of Art Melbourne.



Image: Maryan (detail), 2010, by Rod McNicol

#### All that fall

##### Sacrifice, life and loss in the First World War

Friday 27 March until Sunday 26 July 2015

Focussing on the wide-ranging theme of loss and absence, this exhibition provides a moving 'portrait' of loss during the First World War on the Australian home front. Powerful symbolic images, including contemporary works, evoke the emotional intensity of loss. All that fall: Sacrifice, life and loss in the First World War is the National Portrait Gallery's contribution to the Anzac Centenary.



## Women in Focus

On display in Gallery 7  
Ian Potter Gallery



Betty Churcher 2008 by Adam Knott

In the eighteen months following its establishment in 1998, the National Portrait Gallery acquired just over 120 portraits depicting some 110 different sitters. Roughly a third of these were women. Paintings of artists Emily Kame Ngwarreye and Nancy Borlase by Jenny Sages were among the first three works accessioned into the collection, and images of actress Judy Davis and swimming great Dawn Fraser were included in the first batch of photographic portraits purchased by the Gallery in December 1998.

**Women in Focus** presents a selection of these early acquisitions alongside a sample of the 2600 works in various media subsequently added to the collection through purchase, gift and commission. Underlining the National Portrait Gallery's ongoing

role in showcasing the varied and inventive approaches employed by portrait artists, the display also highlights the energy the Gallery has applied to the development of a collection documenting the strength and diversity of the achievements of contemporary Australian women.

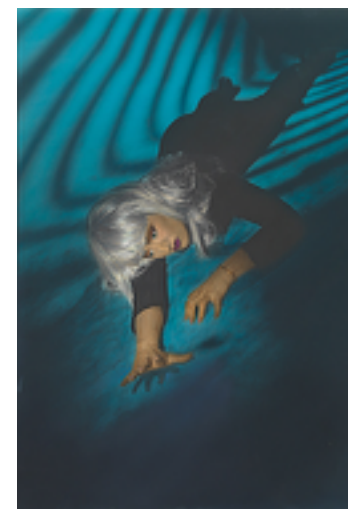
## National Gallery of Australia

**Colour my world**  
handcoloured Australian photography

3 April – 30 August 2015

**Venue**  
Project gallery

This is the first exhibition dedicated to a significant aspect of recent Australian art: the handcoloured photograph. It draws together new acquisitions and rarely seen works from the collection by Micky Allan, Ruth Maddison, Warren Breninger, Julie Rrap, Janina Green, Christine Barry, Fiona Hall, Miriam Stannage, Robyn Stacey, Nici Cumpston, Lyndell Brown, Charles Green and Jon Cattapan.



## National Library of Australia

Permanent photography exhibitions at the National Library of Australia include:

- [Jeff Carter collection](#) - photographs of 20th century Australia and Australians
- [Peter Dombrovskis collection](#) - photographic collection of the Tasmanian wilderness
- [Buckland collection](#) - a collection of photographs, papers and memorabilia relating to railways

## Online Resources

### DP Review

DP Review can be found by clicking on the following link  
[www.dpreview.com](http://www.dpreview.com).

### Photography Competition

Rod Burgess sent me the following link. Geoscience Australia's 2015 Top GeoShot photographic competition is now open.

<http://www.ga.gov.au/news-events/events/public-events/top-geoshot>

### Two interesting links from Paul Livingston

Very interesting one, How Much Does a Scratch Affect the Quality of a Lens?

<http://petapixel.com/2015/07/02/how-much-does-a-scratch-affect-the-quality-of-a-lens/>

Low Budget Light Modifier Trick for Portrait Photography

<http://www.picturecorrect.com/tips/low-budget-light-modifier-trick-for-portrait-photography/>

### Club website

Brian Moir has put in quite a lot of work in bringing the club website up to date.

The website is at: [www.southsidecameraclub.com](http://www.southsidecameraclub.com)

Brian would like your feedback about the site. Here is what he has to say.

I have recently put some time into updating our website. It has basically the same appearance it had before, no new colourful design, but I have:

- Resurrected the calendar of events
- Provided links to the latest newsletter, and some past ones
- Added links to the photos some members have in Flickr and Picasa.

Please look at the site and give me any feedback – anything that doesn't work properly, anything poorly presented, or suggestions on what else needs to be included. Please check it with different browsers and on mobile devices if you can, and let me know if anything doesn't display properly.

I would like to include more links to members' on-line sites. Please let me know if you have photos publicly available in Flickr, Picasa, etc, or your own site, and you would like them to be linked from the club's web page. The link could be to your whole collection, or to just one album.

I hope we can get a club picture gallery working soon.

Brian Moir, [brian.g.moir@gmail.com](mailto:brian.g.moir@gmail.com)



## Note from the Editor

For the next two months I am going to be away on a trip. Mike Gauntlett has been kind enough to volunteer to take over as editor while I am away. Please give him your support by sending him photos, excursion reports, interesting links and any other items that you want published. As Mike is new to editing the newsletter, help him by getting your material to him by about 27 July at the latest.

Mike's email address is: [gauntlett@netspeed.com.au](mailto:gauntlett@netspeed.com.au)

Thank you Mike for taking over the newsletter for the next two months.

John

## Club Office Bearers

| Position            | Person      | Contact details                                                                        |
|---------------------|-------------|----------------------------------------------------------------------------------------|
| President           | Rob Wignell | <a href="mailto:sscc.president@gmail.com">sscc.president@gmail.com</a><br>0416 055 322 |
| Secretary/Treasurer | Iain Cole   | <a href="mailto:icole@grapevine.com.au">icole@grapevine.com.au</a>                     |
| Newsletter Editor   | John Franze | <a href="mailto:jxk@netspeed.com.au">jxk@netspeed.com.au</a><br>0434 558 925           |