



**September Club Meeting - 7:30pm Thursday 14th
at the Canberra Irish Club, 6 Parkinson Street, Weston**

September Talk

Close-up and macro photography – Robert Deane

September Excursion

Where: Floriade Nightfest (Wednesday 24 to Sunday 28 September)

See:

http://www.floriadeaustralia.com/night/what_is_it.cfm

When: Evening of Saturday 27 September

Coordinator: Rod Burgess

Ticket Prices - Nightfest

| | |
|---|---------|
| Adults | \$15.00 |
| Child (4-16 years) | \$10.00 |
| Concessions (pensioners, seniors and student ID card holders) | \$10.00 |
| Family (2 adults / 2 child) | \$45.00 |
| Family (1 adult / 2 child) | \$30.00 |
| Children under 4 years | FREE |

Rod has sought information from the organisers on where to park, whether we need to pre-book tickets and any issues for photographers.

Industry News

CANON EOS 50D



Incorporating speed, creative control and the highest resolution APS-C size sensor on the market, the EOS 50D is the perfect all-

round enthusiast Digital SLR camera.

Key Features:

15.1 megapixel CMOS (APS-C) sensor (highest resolution APS-C size sensor DSLR on the market)

DiG!C 4 Image Processor

ISO speed 100-12800

6.3 frames per second (fps) with continuous shooting up to 60 shots in a single burst (JPEG Large/Fine)

Live View Mode with Live Face Detection AF Mode

HDMI output in full High-Definition

Tough magnesium alloy body

New Creative Auto mode and Quick Control screen

Canon Australia announced an addition to its highly acclaimed EOS Digital SLR range, the EOS 50D. Sitting above the successful EOS 40D, the new DSLR celebrates Canon's forever-evolving technologies and is perfect for enthusiast photographers wishing to upgrade.

F22: Southside Camera Club Newsletter September 2008

Taking photography to new heights, the EOS 50D incorporates a range of new and improved technologies, including a 15.1 megapixel CMOS (APS-C) sensor, the newly developed DiG!C 4 Image Processor, increased ISO capabilities, new Auto Creative mode and Live Face Detection AF Mode. Combine all that with Canon's core technologies, and the EOS 50D becomes the ultimate all-round camera for photographers wanting to enhance their creative control and passion for photography.

"The EOS 50D responds to the needs of enthusiast photographers who want one camera to cater for all their photography requirements, incorporating both entry-level and advanced DSLR technologies," stated Chris Macleod, Brand Manager - Digital SLR, Consumer Imaging Products Group, Canon Australia. "The Canon EOS 50D is the obvious choice for photographers wanting a superior all-round mid range DSLR. It allows users to experiment and play around with new techniques and at the same time challenges them to become more serious and take their photography to the next level."

Breaking Boundaries - New and Improved Canon Technologies

The EOS 50D takes Canon's iconic image quality to new heights with the recently developed 15.1 megapixel CMOS (APS-C) sensor, an industry first. The highest resolution APS-C sized sensor on the market, it allows photographers to shoot higher quality images and capture detail never before possible.

A first for Canon DSLRs, the EOS 50D incorporates Canon's latest Imaging Processor - DiG!C 4. While based on DiG!C III's high-speed rendering of fine detail and natural colour reproduction, DiG!C 4 provides even faster signal processing. This new and improved processor will allow enthusiast photographers to experience faster processing, producing finer detail and natural colour reproduction.

In addition to its superior image capture, the EOS 50D also features improved low light capability. Allowing more flexibility and versatility, the EOS 50D's ISO speed range is ISO 100-3200 in 1/3-stop increments, going up to ISO 6400 or ISO 12800 with ISO expansion. The ability to capture more detail in low light situations, enables more possibilities for photographers and offers users more creative control.

Expanding Shooting Possibilities

The EOS 50D like other Canon DSLR models features Live View Mode with Auto Focus capabilities. Live View allows photographers to preview images in real time on the 3.0-inch VGA LCD monitor with 920,000 dots for greater flexibility and creative composition. In addition to this, the EOS 50D boasts a Live Face Detection AF Mode in Live View shooting, which is a first for Canon EOS. By distinguishing human faces in each shot and adjusting the focus and exposure accordingly, photographers can ensure their subjects are captured clearly.

In another first for Canon DSLR, the EOS 50D offers HDMI output in full High-Definition (HD), ensuring images can be viewed in Full HD when transferred to an HD monitor.

Built into a tough magnesium alloy body, the EOS 50D combine's stylish design and durability in one camera. Offering versatility and increasing creative possibilities the 50D is compatible with the full range of widely-recognised Canon EF and EF-S lenses.

Making Creative Photography Easier

The EOS 50D offers a new Creative Auto mode with Quick Control screen, enabling photographers to adjust settings and shoot images just as they visualise them. Users do not need to understand technical terms such as aperture and exposure. For example, users can adjust images to be a little brighter or make the background more blurry in Creative Auto mode, rather than by understanding how to change the exposure or aperture.

To further enhance image quality, the EOS 50D incorporates automatic image correction technologies, resulting in better images for photographers:

Auto Lighting Optimizer - analyses brightness and contrast automatically before making adjustments to achieve optimal images.

Auto correction of lens peripheral illumination - lens peripheral illumination fall-off is automatically corrected to suit each lens when shooting in JPEG mode. For RAW images, the correction can be made using the free software which comes with the EOS 50D - DPP (Digital Photo Professional).

New Canon Telephoto Zoom Lens - The Perfect Match

Canon also announced today the EF-S18-200mm f/3.5-5.6 IS lens (focal length image equivalent to 29-320mm in 35mm format) which is lightweight, compact and offers Canon's superior Image Stabilizer technology. The perfect all-round lens for enthusiast photographers, it also comes packaged with the EOS 50D Premium Kit.

Pricing and Availability

The EOS 50D body will be available in Body Only (RRP \$TBC), as an Enthusiast Kit with EF-S17-85mm f/4-5.6 IS USM Lens (RRP \$TBC), and as a Premium Kit with EF-S18-200mm f/3.5-5.6 IS Lens (RRP \$TBC). These kits and accessories will all be available from 1 October 2008 through Canon dealers nationally. For more information customers can contact Canon on 1800 021 167, or visit the website at canon.com.au.

PHASE ONE INTRODUCES TILT/SHIFT LENS BASED ON COLLABORATION WITH HARTBLEI



Phase One A/S announced an exclusive strategic alliance with Hartblei to drive medium format photographic lens innovation. The first product of this alliance is the Phase One 3.5/45 mm TS

F22: Southside Camera Club Newsletter September 2008

lens, based on the popular Hartblei 45 mm f/3.5 Super Rotator lens.

Specially designed for the professional photographer, this small, lightweight tilt shift lens is ideal for location or studio applications. It offers up to 12 mm shift and 8 degrees tilt for maximum flexibility.

Together Phase One and Hartblei have engineered important design advancements with this lens, including:

- New 2008 batch optical glass with multi-layer coating
- Improved 12 blade aperture design
- Mechanics with tighter tolerances
- New interior antireflection coating
- More streamlined mechanical design

When used with the Phase One 645 camera system, the Phase One 3.5/45 mm TS lens offers a simple, alternative to more advanced technical cameras. With it, photographers can adjust the plane of focus without changing the depth of field, correct perspective and selectively sharpen and soften an image – quickly gaining creative possibilities that cannot be realized in post-production.

The Phase One 3.5/45 TS lens comprises a simple eight-lens optical system. Each element is coated with a multilayer anti-reflective coating to reduce internal reflections, increase image transmission efficiency and enhance contrast. The new lens is also supported by Phase One's Lens+ and Focus+ optical correction technologies available in Capture One 4.

Pricing and Availability

The Phase One 3.5/45 TS lens is 2.990€ / \$3,990 and may be ordered now. It will be demonstrated at Photokina, at which time more details will be available. Volume shipment is expected in Q4 2008.

Phase One 3.5/45 mm TS lens specifications

| | |
|---------------------------|---|
| Compatible Cameras | Phase One 645 / Mamiya 645AFD |
| Focal length | 45 mm (equivalent to 24 mm focal length for a 35mm camera) |
| Focusing | manual |
| Maximum aperture | 1:3.5 |
| Aperture range | 3.5 - 22 (manual) |
| Optical Construction | 8 elements in 7 groups |
| Angle of view | 83° (98° with optical unit shifted) |
| Minimum focusing distance | 1.15 ft (0.35 m) |
| Filter size | Ø82 mm |
| Lens movement | Individual rotation of both tilt and shift in any direction |
| Rotation movement range | 360°, with click stops every 15° |
| Shift movement range | 0 to 12 mm in any direction |
| Tilt movement range | 0 to 8° in any direction |

| | |
|--------------------|------------------------------------|
| Standard Accessory | Flower-shaped lens hood |
| Compatible Mount | For Canon, Nikon, Pentax, and Sony |
| Weight | 880 grams |
| Dimensions | 96×110 mm |

TAMRON SP AF90mm F/2.8 Di MACRO 1:1 with Built-in AF Motor for Nikon (Model 272E)



Lightweight, Compact and High-performance Macro Lens Designed for Full-size SLR Cameras

[Tamron Co., Ltd](#) (Mr. Morio Ono, President) has successfully renewed the existing SP AF90mm F/2.8 for Nikon and is now pleased to announce the availability of the lens with a built-in AF motor for Nikon. (The lens is already available in mounts for Canon, Pentax and Sony.)

Tamron's SP 90mm lens has been highly evaluated by photographers all over the world not only as a high-performance macro lens but also as a medium telephoto lens suitable for all photographic applications including landscape and portraiture. The SP 90mm F/2.8 macro lens, first introduced in 1979, underwent a major model change in 2004 to feature a Digitally Integrated (Di) design while retaining its renowned optical performance.

MAIN FEATURES

Outstanding Image Quality by Virtue of "Di" (Digitally Integrated) Design

The lens provides outstanding image quality whether the medium in use is silver halide (film) or a digital image sensor, since it features Tamron's "Di" optical system designed to meet the performance characteristics of digital cameras as well as film cameras.

Features Coatings Optimized for Digital Photography

One major difference between digital cameras and film cameras is how internal reflections in mirror boxes may occur and to what extent. These internal reflections can cause unwanted flare or ghosting on the final image. In a film camera, internal reflections can be caused inside the mirror box of the camera or from light reflecting off the film surface. In a digital camera, stronger reflections can occur from light bouncing off the sensor, since CCD and CMOS sensors are almost mirror-like on their surface, making the problem more noticeable. The SP AF90mm F/2.8 Di lens features an improved coating technology that reduces to the absolute minimum the reflections that are likely to cause this issue.

F22: Southside Camera Club Newsletter September 2008

Angle of View Ideal for Film and Digital Photography

The SP AF90mm lens offers a medium telephoto focal length making it particularly useful as a portrait/macro lens when used with a full-size sensor or film camera. When used on a digital SLR camera (with an APS-C sized image sensor), the lens provides an angle of view equivalent to that of 140mm (35mm-equivalent), so it can be used conveniently as a telephoto macro lens for digital photography.

Lightweight and Compact Design

The SP AF90mm is a 1:1 life-size macro lens for which outstanding optical performance is required, yet it uses engineering plastic materials for its barrel parts. As a result, the lens is the most lightweight medium telephoto lens* among 1:1 life-size macro lenses in the AF90-100mm class, realizing portability and high image quality at a superior level.

AF/MF Switchover in Single Action

The lens features a mechanism to allow speedy AF/MF switchover in a single action. The rubber pattern on the intentionally wide focus control ring ensures a better grip, making use comfortable since macro lenses are frequently used in the manual focusing mode.

*Weight value of Nikon AF-fit model compared to other makes

Footnotes: *The AF mode does not function when the NII mount is used with the early AF cameras with the built-in AF motor. Only the MF mode is available. The NII mount in the Di series are not equipped with an aperture ring. Accordingly, there may be some limitations and restrictions upon using.*

New Tamron SP AF10-24mm Di II High-Performance Ultra Wide-Angle Zoom Lens (Model B001)



Designed for Exclusive Use for Canon and Nikon (with Built-in AF Motor) Small Sensor DSLR Cameras

[Tamron Co., Ltd](#) (Mr. Morio Ono, President) announced the SP AF10-24mm F/3.5-4.5 DiII LD Aspherical (IF) featuring an unprecedented 2.4X zoom ratio in its class of ultra wide-angle zoom lenses. The innovative, high-performance ultra wide-angle zoom lens (model B001) is designed exclusively for Canon and Nikon digital SLRs with APS-C sized image sensors*1. Pentax and Sony mount models will be announced at a later date.

The SP AF10-24mm Di II, the first-ever ultra wide-angle lens

for digital SLR cameras, features a focal length range with the 35mm equivalent of 16mm ultra wide-angle to 37mm semi-wide-angle*2 in a user-friendly lightweight, compact design. With this versatile ultra-wide-angle zoom lens, photographers can capture magnificent vistas and extraordinary close-ups, bold compositions and unique perspectives, creating imagery impossible with standard wide-angle lenses.

The advanced optical system of this ultra wide angle lens features large-aperture, glass-molded aspherical elements, hybrid aspherical elements, as well as elements made of special low-dispersion glass and high-refractive index glass, all of which combine to deliver high-quality imagery and performance

MAIN FEATURES

Covers the Broadest Range Ever-from 10mm Ultra Wide-angle to 24mm-in Its Class.

The new Tamron ultra wide-angle zoom lens covers the 35mm full-size format equivalent of 16-37mm, for the first time in this class of zoom lenses. This focal length range-10mm ultra wide-angle to 24mm semi wide-angle-enables the user to enjoy hassle-free wide-angle photography.

Features an Optical Design Optimized for Digital Camera Characteristics

- **Special Optical Glass Materials for High Optical Performance**
The new zoom lens uses a high-precision, large-aperture glass-molded aspherical lens element and three hybrid aspherical elements to minimize spherical aberration, coma, and distortion. In addition, a pair of LD (Low Dispersion) glass elements and an HID (High-refractive Index) glass element together compensate for on-axis and lateral chromatic aberrations, delivering high optical quality.
- **Optical System Designed to Optimize Angles of Incidence of Light Rays Reaching the Imager**
The new ultra wide-angle zoom lens uses a new optical system designed to confine the changing angles of incidences of light rays reaching the imager within a certain scope over the entire image field, from the center to the periphery, addressing the effects of variances caused by zooming.
- **Enhanced Peripheral Illumination**
Peripheral light fall-off that becomes an image-degrading factor in wide-angle photography is minimized to ensure high optical quality from the center to the periphery.
- **Outstanding Resolution**
As an SP Di II class lens, it provides high optical quality in resolution, contrast, and flatness of image field.
- **Internal Surface Coatings Reduce Ghosting and Flare**
The lens uses newly developed multiple-layer coatings and internal surface coatings (i.e.,

F22: Southside Camera Club Newsletter September 2008

multiple-layer coatings on cemented surfaces of plural lenses) to reduce the image degradation caused by the reflection of light rays entering from the lens front and affected by the imager.

Ultra-Compact, Lightweight Design

The new zoom lens covers a wider focal length range with a greater zoom ratio and offers a faster maximum aperture and enhanced optical quality than the existing SP AF11-18mm zoom lens (Model A13). Despite the higher specifications, the new zoom lens is lightweight and compact and accepts a 77mm filter, the same as the existing SP AF11-18mm F/4.5-5.6 Di II zoom lens (Model A13).

Minimum Focus Distance of 0.24m (9.4") Across Zoom Range

Because a close-focusing capability is essential in wide-angle photography, Tamron engineered a 0.24m (9.4") minimum focus distance across the zoom range. This capability gives the user freedom to create images with an exaggerated perspective at the 10mm ultra wide-angle end and shoot with a maximum magnification ratio of 1:5 at the 24mm semi-wide-angle setting, the largest magnification ratio in its class.

Flower-shaped Lens Hood Is a Standard Accessory

A glare-reducing, flower-shaped lens hood is included as a standard accessory. The special hood provides optimum shading of light rays that enter from the rectangular frame outside the image field.

New External Design Expressing "State-of-the-Art Ultra Wide-angle Zoom Lens" in the Digital Era

- The new zoom lens features a refined exterior design that enhances its uniformity and smoothness, matching the designs of current digital SLRs.
- The metallic finish of the gold band on Tamron lenses makes it stand out as a Di II lens, and the layout of alphanumeric markings, including the TAMRON logo in the center of the control ring, has been improved for greater visibility.
- Exquisite black mat finish is applied to the black paint over the lens barrel for improved quality appearance.
- The rubber patterns on the zoom and focus rings have been enhanced to compliment today's digital camera design style and ensure better handling

*1 Di (Digitally integrated design)-II lenses are designed for exclusive use on digital cameras with APS-C sized smaller image sensors. Di II lenses are not designed for use with 35mm film cameras and digital SLRs with image sensors larger than 24mmx16mm.

*2 Tamron's conversion value is 1.55x

*3 As of August 2008, according to Tamron's research of ultra wide-angle zoom lenses designed for exclusive use on digital SLR cameras.

Canon fixes firmware for 450D



Canon has posted a firmware update for the EOS 450D / Digital Rebel XSi. The latest version (1.0.9) fixes Auto Exposure Bracketing (AEB) problems, errors with the Live View Exposure Simulation warning indicator and playback problems after continuous shooting when a printer or a video display is attached.

[Click here to download the EOS REBEL XSi/450D Firmware Update Version 1.0.9](#)

Ricoh GX200 firmware update



Ricoh has released a firmware update for the GX200 compact digital camera. Version 1.14 fixes two minor errors that occur in very specific conditions. This update closely follows the Version 1.10 update that was released in mid-July.

[Click here to download the firmware update Version 1.14](#)

SanDisk Extreme III 30MB/s edition SD Card introduced

SanDisk has introduced the Extreme III 30MB/s Edition line of SD High Capacity (SDHC) memory cards. Featuring a 50% speed boost from previous 20MB/s cards, the new card makes it possible to record 39 6MB images while shooting at 4.5 fps -



complementing the new range of DSLRs. In addition, they are also capable of operating in temperatures ranging from -13 to 185 degrees Fahrenheit or -25 to 85 degrees Celsius.

The new cards are expected to be available worldwide in September with 4GB, 8GB and 16GB capacities.

[Click here for more information](#)

What's On – Exhibitions & Events

AUGUST



For VIVID day-by-day see the end of the newsletter.

What's On – Photographic Opportunities

Upcoming

The Canberra Vintage & Classic Bicycle Ride 28 September 2008

A great opportunity for owners of, and all those interested in, old cycles (pre 1985) to meet and ride around Canberra's picturesque Lake Burley Griffin (22km) or a shortened ride of 10km. Meet at 10am at the Carillon in Kings Park, Wendouree Drive and join in a fantastic day of checking out the old cycles, talking with other enthusiasts and enjoying a leisurely cycle around your Capital's famous lake. A Peddle Power sponsored event.

Register your interest by contacting Trevor Shone on (02) 62584173 Mobile 0418619831..... or email on 'fasifern@bigpond.com.au'.

When: 28/09/2008 - 28/09/2008, 1000 - 1400

Venue: [The Carillon, Kings Park Wendouree Drive](#)

REFUGEE CAMP IN YOUR CITY

REFUGEE CAMP IN YOUR CITY inTENTsive care with Médecins Sans Frontières Ever wondered what life is like in a refugee camp? International medical aid organisation Médecins Sans Frontières (MSF) is pitching a REFUGEE CAMP IN

YOUR CITY in September for the final leg of its inaugural Australian tour. This free and interactive experience has travelled the world and touched audiences as far-flung as Tokyo, Zurich, Toronto and New York. Guided tours are available by MSF Australian field workers including doctors, nurses, logisticians and aid workers, who will share their personal insight as they guide you through the recreated camp. You will be introduced to the living and health conditions of people who have had to flee their homes in countries such as Sudan, Bangladesh, Thailand and Democratic Republic of Congo. Tours depart regularly throughout the day, lasting 45-60 minutes. Bookings are required for large groups or schools. For those on a tight schedule, less structured visits are welcome. REFUGEE CAMP IN YOUR CITY Glebe Park Cnr Akuna & Bunda Sts Canberra 20-24 September 9am to 6pm Don't miss this rare and final chance this year, to experience first-hand what happens in a refugee camp. For more information and group bookings visit: www.msf.org.au/refugeecamp Website URL - <http://www.msf.org.au/refugeecamp>

When: 20/09/2008 - 24/09/2008, 0900 - 1800

Venue: [Glebe Park](#)

Southside Camera Club Office Bearers

| Position | Person | e-mail address | Phone (ah): |
|-------------------|--------------|--|-------------|
| President | Rod Burgess | rodnkym@actewagl.net.au | 6292 6698 |
| Sec/Treasurer | Graeme Kruse | gkruse@bigpond.net.au | 6292 3073 |
| Newsletter Editor | Warren Hicks | hicks@netspeed.com.au | 6288 3689 |

F22: Southside Camera Club Newsletter September 2008

VIVID-DAY BY DAY

9 September 2008

Identifying Family Photographs National Archives of Australia, Queen Victoria Terrace, Parkes, Canberra

Identifying the photographic processes and styles in your family collection can not only help determine appropriate storage, but also assists with pinning down dates and putting a name to a long-lost relative.

4pm to 5pm. All welcome. Free event, open to the public. Bookings are essential.

Contact: events@naa.gov.au or 02 6212 3656

Web site: www.naa.gov.au

Opening event for 'The Spirit of Sport' Queanbeyan Performing Arts Centre, Crawford Street (behind the council chambers) Queanbeyan, NSW

6pm to 8pm. Free event, open to the public.

Contact: Gary Steer gary@wildvisuals.com.au or 02 9557 0823, or Marie-Jo Le Moal marijo@bigpond.net.au or 02 9953 2808

11 September 2008

Opening event for 'New York Muse' ADFA Library, UNSW@ADFA, Northcott Drive, Australian Defence Force Academy, Canberra

5.30pm. Entry by invitation.

Contact: David Paterson d.paterson@adfa.edu.au

'Picture Paradise' exhibition floortalk with Robert Deane: Evolution of photography in Japan to 1940 National Gallery of Australia: Small Theatre, Parkes Place, Canberra

Robert Deane, Senior Researcher at the NGA, will present an illustrated talk on the evolution of photography in Japan to 1940 looking at those aspects that were essentially Japanese in character and use.

12.45pm. Free event, open to the public.

Contact: National Gallery of Australia 02 6240 6502

Web site: www.nga.gov.au

13 September 2008

Floor talk at ANCA by Derek Ross ANCA Gallery, 1 Rosevear Place (Corner of Antill Street), Dickson, Canberra

4.15pm. Free event, open to the public.

Contact: anca@iimetro.com.au or 02 6247 8736

Opening Event for 'Past and Present' ANCA Gallery, 1 Rosevear Place (Corner of Antill Street), Dickson, Canberra

5pm. Free event, open to the public.

Contact: anca@iimetro.com.au or 02 6247 8736

14 September 2008

Artist floor talk for 'Australia - Just Add Water' Strathnairn Homestead and Gallery, 90 Stockdill Drive, Holt, Canberra

Canberra photographer Joseph Cali talks about the making of his exhibition and the relationship between water, environment and landscape.

2pm. Free event. All welcome.

Contact: Joe Cali joe.cali@anu.edu.au or 0429 233 616

Web site: <http://www.joecali.com.au>

15 September 2008

Behind the scenes tour of the National Library's Photographic Collection

National Library of Australia, Parkes Place, Canberra
Behind the scenes tour of the National Library's Photographic Collection. Take a tour with a curator from the Library's Pictures Branch. See some of the 700,000 historic photographs in the collection, how they are stored and how they are cared for. The collection includes rare Daguerreotypes and albumen prints from the nineteenth century, photograph albums and exhibition prints – the beautiful, the weird and the wonderful. Tours will be run every Monday during the festival 11am - noon. Free event, open to the public. Bookings are essential.

Contact: bookings@nla.gov.au or 02 6262 1271

web site: www.nla.gov.au

19 September 2008

Opening event for 'Celebrity: Bungendore' Bungendore Wood Works Gallery, Kings Highway, Bungendore, NSW

5.30 for 6pm. Free event, open to the public.

Stan d'Argeaval gallerystan@bwoodworks.com.au or 02 6238 1682

Canberra Youth Orchestra concert in association with 'Picture Paradise' National Gallery of Australia: Exhibition Galleries Foyer, Parkes Place, Canberra

The Canberra Youth Orchestra, conducted by Dominic Harvey, presents new Australian works; a piano concerto by Neil Goodchild and a guitar concerto by Tim Hansen, and the premiere of an orchestral piece by Japanese composer, Kanako Okamoto. The 'Picture Paradise' exhibition will be open for the concert.

7 - 8pm. Cost: \$15; \$10 members or concession.

Contact: National Gallery of Australia 02 6240 6502

Web site: www.nga.gov.au

20 September 2008

Canberra Youth Orchestra concert in association with 'Picture Paradise' National Gallery of Australia: Exhibition Galleries Foyer, Parkes Place, Canberra

The Canberra Youth Orchestra, conducted by Dominic Harvey, presents new Australian works; a piano concerto by Neil Goodchild and a guitar concerto by Tim Hansen, and the premiere of an orchestral piece by Japanese composer, Kanako Okamoto. The 'Picture Paradise' exhibition will be open for the concert.

F22: Southside Camera Club Newsletter September 2008

7 - 8pm. Cost: \$15; \$10 members or concession.
Contact: National Gallery of Australia 02 6240 6502
Web site: www.nga.gov.au

21 September 2008

Opening event for 'Doors of Queanbeyan'
Benedict House, 29 Isabella Street, Queanbeyan NSW
2pm. Free event, open to the public.
Contact: Kate Shelton 17218@tpg.com.au or 02 6284 2868

22 September 2008

Behind the scenes tour of the National Library's Photographic Collection

National Library of Australia, Parkes Place, Canberra

Behind the scenes tour of the National Library's Photographic Collection. Take a tour with a curator from the Library's Pictures Branch. See some of the 700,000 historic photographs in the collection, how they are stored and how they are cared for. The collection includes rare Daguerreotypes and albumen prints from the nineteenth century, photograph albums and exhibition prints – the beautiful, the weird and the wonderful. Tours will be run every Monday during the festival 11am - noon. Free event, open to the public. Bookings are essential.

Contact: bookings@nla.gov.au or 02 6262 1271
web site: www.nla.gov.au

24 September 2008

Opening event for 'Simplicity'
Tuggeranong Community Arts Centre, corner of Cowlshaw and Reed Streets, Greenway, Canberra
5.30pm. Entry by invitation. Free.
Contact: Suzie Edwards, suzie@tca.asn.au

25 September 2008

Miller Street Soiree #3 - Remastered

National Library of Australia, Parkes, Canberra

Twenty Australian photographers present a one night only multimedia exhibition featuring photography and music, plus Photographic Print Raffle and People's Choice Award.

6pm to 8pm. Free event, open to the public. Bookings: bookings@nla.gov.au or 02 6262 1271
Contact: Sean Davey pidgin@tpg.com.au or 0408 662 996
Web site: www.pidgin.com.au

Opening Event for 'Shot'

ANCA Gallery, 1 Rosevear Place, (corner of Antill Street), Dickson, Canberra

6pm. Free event, open to the public.

Contact: anca@iimetro.com.au or 02 6247 8736

27 September 2008

Extreme Scanning with Canadian artist Lynne Heller **The Australian National University School of Art Photography and Media Workshop, 1st Floor, Building 105, Childers Street, Acton, Canberra**

In this one day workshop media artist Lynne Heller will demonstrate how to get the most out of your desktop scanner. Participants will examine how scanners work and what they can expect of them when scanning real life objects at high resolutions. 'Extreme Scanning' introduces you to a new world of hyper detail and the illusion of shifting scale. Advanced scanning techniques and tips for working with and

manipulation of large files in Photoshop will be covered in this workshop. Basic Photoshop Skills necessary. Ages 16 and up. 10am - 5pm. Cost: full \$140; concession \$80. Bookings essential.

Contact: Photomedia Workshop 02 6125 5815 or Peter Fitzpatrick peter.fitzpatrick@anu.edu.au
Web site: <http://www.anu.edu.au/art/photomedia/>

'Shot' Floor Talk by Paul Murray and Penny Boyer **ANCA Gallery, 1 Rosevear Place (Corner of Antill Street), Dickson, Canberra**

A talk about work by staff of the Canberra Institute of Technology Faculty of Fashion, Art and Design. Each participant in this group exhibition has taken up an aspect of photography as an inspiration or focus for the work.

2pm. Free event, open to the public.

Contact: anca@iimetro.com.au or 02 6247 8736

28 September 2008

Shooting Strathnairn

Strathnairn Homestead and Gallery, 90 Stockdill Drive, Holt, Canberra

Come and photograph the landscape around Strathnairn with photographic artist Joe Cali.

Free event. Numbers limited - bookings essential (see website)

Contact: Joe Cali joe.cali@anu.edu.au or 0429 233 616

Web site: <http://www.joecali.com.au>

29 September 2008

Behind the scenes tour of the National Library's Photographic Collection

National Library of Australia, Parkes Place, Canberra

Behind the scenes tour of the National Library's Photographic Collection. Take a tour with a curator from the Library's Pictures Branch. See some of the 700,000 historic photographs in the collection, how they are stored and how they are cared for. The collection includes rare Daguerreotypes and albumen prints from the nineteenth century, photograph albums and exhibition prints – the beautiful, the weird and the wonderful. Tours will be run every Monday during the festival 11am - noon. Free event, open to the public. Bookings are essential.

Contact: bookings@nla.gov.au or 02 6262 1271

web site: www.nla.gov.au

1 October 2008

Children's pin-hole camera workshop

Australian War Memorial: Orientation Gallery, Treloar Crescent, Campbell, Canberra

Under the direction of Memorial photographers children will make their own pin-hole camera, learn basic principles of photography, then shoot and process their work. This two-and-a-half hour workshop is suitable for school-aged children years 6 and over.

10am and 2pm. Bookings essential and places are limited. Cost: \$15 per person, \$10 for Friends of the Memorial.

Contact: 02 6243 4473

2 October 2008

'Picture Paradise' exhibition floortalk with Robert Deane: Linnaeus Tripe, British photographer in Asia

F22: Southside Camera Club Newsletter September 2008

National Gallery of Australia: Exhibition Galleries, Parkes Place, Canberra

Robert Deane, Senior Researcher at the NGA, will examine the contribution of Linnaeus Tripe to the photographic history of India and Myanmar.

12.45pm. Free event, open to the public.

Contact: National Gallery of Australia 02 6240 6502

Web site: www.nga.gov.au

3 October 2008

Sun prints children's workshop for 7 to 12 year olds

with Samantha Vawdrey in association with the exhibition 'Picture Paradise: Asia-Pacific Photography 1840s - 1940s'

National Gallery of Australia: Small Theatre, Parkes Place, Canberra

Join Samantha Vawdrey, Manager, Public Programs, Monash Art Gallery, and learn how to use the suns rays and water to create a photographic print of plants and flowers to create your own botanical specimen.

10am to 12 noon. Open to children aged 7 to 12 years. Cost: \$20: \$15 (members) Bookings essential, after July 1.

Contact: 02 6240 6504 or 02 6240 6537

Web site: www.nga.gov.au

Sun prints children's workshop

with Samantha Vawdrey in association with the exhibition 'Picture Paradise: Asia-Pacific Photography 1840s - 1940s'

National Gallery of Australia: Small Theatre, Parkes Place, Canberra

Samantha Vawdrey will introduce students to the process of making cyanotypes (sunprints). Students will be actively involved in the process from the mixing of chemicals, to coating the paper and exposing it to light, to finally produce a photographic print of flora to create their own botanical specimens.

1pm to 4.30pm Open to children aged 13 to 15 years. Cost: \$20: \$15 (members) Bookings essential, after July 1.

Contact: 02 6240 6504 or 02 6240 6537

Web site: www.nga.gov.au

Outdoor Projection of Photographic Images

National Library of Australia podium, Parkes Place, Canberra

A projection of photographic images by Beam Data Projection Group on to the external walls of the National Library building. 7.30pm - 9.30pm. Free event, open to the public.

Contact: Matthew Annett mannett@nla.gov.au

Icon on icon: Iconic photographs projected on to the Memorial's iconic entrance

Australian War Memorial, front facade facing Anzac Parade, Treloar Crescent, Campbell, Canberra

In association with the Icon and Archive exhibition, photographs will be projected on to the front of the main building, immersing the building in its photographic collection. Dusk - 10pm. Free event, open to the public.

Contact: Shaune Lakin shaune.lakin@awm.gov.au

4 October 2008

'Shot' Floor Talk by Sylvia Velez and Julian Stevenson

ANCA Gallery, 1 Rosevear Place (Corner of Antill Street), Dickson, Canberra

A talk about work by staff of the Canberra Institute of Technology Faculty of Fashion, Art and Design. Each participant in this group exhibition has taken up an aspect of photography as an inspiration or focus for the work.

2pm. Free event, open to the public.

Contact: anca@iimetro.com.au or 02 6247 8736

'Picture Paradise' exhibition floortalk with Gael Newton: The empire of plants

National Gallery of Australia: Exhibition Galleries, Parkes Place, Canberra

Gael Newton, Senior Curator, Photography and curator of the exhibition *Picture Paradise*.

2pm. Free event, open to the public.

Contact: National Gallery of Australia 02 6240 6502

Web site: www.nga.gov.au

'Picture Paradise' exhibition floortalk: Mundy's photographic magnum opus: Rotomahana and the Boiling Springs of New Zealand (1875)

National Gallery of Australia: Exhibition Galleries, Parkes Place, Canberra

New Zealand photo-historian John B Turner talks on Daniel Louis Mundy's 1860s-1870s landscape photography in New Zealand.

3pm. Free event, open to the public.

Contact: National Gallery of Australia 02 6240 6502

Web site: www.nga.gov.au

Icon on icon: Iconic photographs projected on to the Memorial's iconic entrance

Australian War Memorial, front facade facing Anzac Parade, Treloar Crescent, Campbell, Canberra

In association with the Icon and Archive exhibition, photographs will be projected on to the front of the main building, immersing the building in its photographic collection. Dusk - 10pm. Free event, open to the public.

Contact: Shaune Lakin shaune.lakin@awm.gov.au

5 October 2008

Icon on icon: Iconic photographs projected on to the Memorial's iconic entrance

Australian War Memorial, front facade facing Anzac Parade, Treloar Crescent, Campbell, Canberra

In association with the Icon and Archive exhibition, photographs will be projected on to the front of the main building, immersing the building in its photographic collection. Dusk - 10pm. Free event, open to the public.

Contact: Shaune Lakin shaune.lakin@awm.gov.au

6 October 2008

Behind the scenes tour of the National Library's Photographic Collection

National Library of Australia, Parkes Place, Canberra

Behind the scenes tour of the National Library's Photographic Collection. Take a tour with a curator from the Library's Pictures Branch. See some of the 700,000 historic photographs in the collection, how they are stored and how they are cared for. The collection includes rare Daguerreotypes and albumen prints from the nineteenth century, photograph albums and exhibition prints – the beautiful, the weird and the wonderful. Tours will be run every Monday during the festival

F22: Southside Camera Club Newsletter September 2008

11am - noon. Free event, open to the public. Bookings are essential.

Contact: bookings@nla.gov.au or 02 6262 1271

web site: www.nla.gov.au

8 October 2008

Children's pin-hole camera workshop

Australian War Memorial: Orientation Gallery, Treloar Crescent, Campbell, Canberra

Under the direction of Memorial photographers children will make their own pin-hole camera, learn basic principles of photography, then shoot and process their work. This two-and-a-half hour workshop is suitable for school-aged children years 6 and over.

10am and 2pm. Bookings essential and places are limited. Cost: \$15 per person, \$10 for Friends of the Memorial.

Contact: 02 6243 4473

Opening Event for 'A Chronicle of Quirks'

ANCA Gallery, 1 Rosevear Place, (corner of Antill Street), Dickson, Canberra

6pm. Free event, open to the public.

Contact: anca@iimetro.com.au or 02 6247 8736

Opening of the 'Sixth LEICA/CCP Documentary Photography Award' exhibition at ANU School of Art Gallery

The Australian National University School of Art, Ellery Crescent, Acton, Canberra

6pm. Free event, open to the public.

Contact: ANU School of Art Gallery sofagallery@anu.edu.au or 02 6125 5841

9 October 2008

Opening event for 'Greece Down Under'

Olympus room, 1st Floor, Hellenic Club of Canberra, Matilda Street, Woden, Canberra

The 'Greece Down Under' exhibition will be officially opened by the Ambassador of Greece, HE Mr Georgios Zois.

6.30pm. Members and friends of the Hellenic Club are welcome to attend.

Contact: Michael T. Kazan
culturaladvisor@hellenicclub.com.au

Web site: www.hellenicclub.com.au

10 October 2008

Children's South Pacific dance workshop

National Gallery of Australia: Small Theatre, Parkes Place, Canberra

Join Shiara Astle, Pacific dancer, teacher and choreographer from Phoenix Performing Arts, and learn basic dance moves and their meanings in stories told in dance from islands of the South Pacific.

11am - 12 noon. Ages 5+. Booking essential.

Contact: National Gallery of Australia 02 6240 6502

Web site: www.nga.gov.au

Outdoor Projection of Photographic Images

National Library of Australia podium, Parkes Place, Canberra

A projection of photographic images by Beam Data Projection Group on to the external walls of the National Library building. 7.30pm - 9.30pm. Free event, open to the public.

Contact: Matthew Annett mannett@nla.gov.au

11 October 2008

Darkroom Experiences for Kids: a workshop with Canberra-based artists Peter Fitzpatrick and Belinda Reily The Australian National University School of Art Photography and Media Workshop, 1st Floor, Building 105, Childers Street, Acton, Canberra

A one day workshop that introduces kids to the magical world of the analogue darkroom. Suitable for children aged 12-16. Participants will work with both colour and B&W materials to produce finished pieces of work. No previous photographic knowledge is necessary.

10am to 4pm. Material fee \$50. Bookings essential.

Contact: Photomedia Workshop 02 6125 5815 or Peter Fitzpatrick peter.fitzpatrick@anu.edu.au

Web site: <http://www.anu.edu.au/art/photomedia/>

Floor talk at ANCA by Paul Murray

ANCA Gallery, 1 Rosevear Place, (corner of Antill Street), Dickson, Canberra

2pm. Free event, open to the public.

Contact: anca@iimetro.com.au or 02 6247 8736

12 October 2008

'Picture Paradise' exhibition floortalk with Dr Rod Ewins: Documenting early Fiji: Photography in Levuka in the late 19th Century

National Gallery of Australia: Exhibition Galleries, Parkes Place, Canberra

Dr Rod Ewins, artist, anthropologist and researcher in Fijian history and indigenous culture, speaks about by the F.H. Duffy montage, *Panorama of Levuka, Fiji, and portraits* c. 1870 - 1879 in the context of Fiji's transition to a British colony.

2pm. Free event, open to the public.

Contact: National Gallery of Australia 02 6240 6502

Web site: www.nga.gov.au

Canberra Photographic Collectors' Society

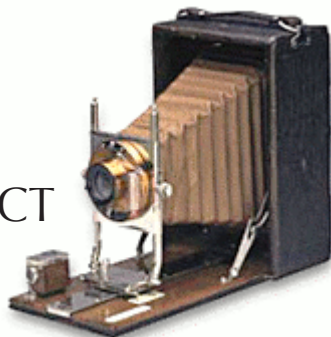
PHOTOGRAPHIC FIESTA

Sunday 2nd November, 2008

9am - 1pm

The Canberra Irish Club

6 Parkinson Street, Weston, ACT



100'S OF

- * ANTIQUE & COLLECTABLE CAMERAS
- * USEABLE CAMERAS & ACCESSORIES
- * PHOTOGRAPHIC BOOKS

* BUY * SELL * SWAP * TRADE *



**TABLES
\$30**

**FREE ADMISSION
&
PARKING**

Auction at 12.30
Don't miss out on the bargains!

To book your table, contact Sylvana Ransley
Phone: 0404 152 052 or
Email: sylvana@vanagraphics.com.au