



September Club Meeting - 7:30pm Thursday 10th at the Canberra Irish Club, 6 Parkinson Street, Weston

2009 PROGRAM

PRESENTATIONS

Month	Presentation & Coordinator
September	Landscape Photography (Robert Deane)
October	Travel Photography
November	Photobooks

EXCURSIONS

Month	Excursion & Coordinator
19 th September	Little Cascades (Sandie Walters)
October	Coast Trip: Eden
24 th & 25 th October	Open Gardens (Pamela Finger)

SPECIAL INTEREST GROUPS

See end of Newsletter for Photoshop SIG program.

SEPTEMBER EXCURSION

LITTLE CASCADES

WHEN

19th September 2009

Meet at the Polo Flat Truckstop at 10:15am, or at the Little Cascades carpark. See instructions below

WHAT

There are plenty of photographic opportunities on the walk to the falls, at the falls and also all along the river. I plan to be at the Polo Flat Truckstop, Cooma at 10am for morning tea, then leave there at 10:30 and get to the Little Cascades carpark by 11:30 am, weather permitting, for a pre lunch walk to the Tuross Falls. Once we get back, at around 12:30, we can have a picnic lunch by the river and then maybe have a walk in another direction after lunch.

HOW TO GET TO THE POLO FLAT TRUCK STOP, COOMA

- Drive to Cooma (about 100km's), but just as you get to Cooma,
- Turn Left onto Polo Flat road
- Go just past the Numeralla Road intersection and on the left hand side, you'll see a steep pitched roof. That's the Polo Flat Truck Stop (Caltex)

We will LEAVE the Polo Flat Truckstop at 10:30am

LITTLE CASCADES CARPARK

- Drive to Cooma (about 100km's), but just as you get to Cooma,
- Turn Left onto Polo Flat road. Go for less than 1km
- Turn left at the Cooma Numeralla Road. Go for about 19kms. Go through Numeralla and continue on the Numeralla Countegany Road for about 12kms. It veers onto the Badja Road towards the end.
- Turn Right on the Badja Forest Road (becomes dirt) and go for about 4½ kms
- Turn Right at Peters Road (sign post "Cascades") and go for about 1½kms

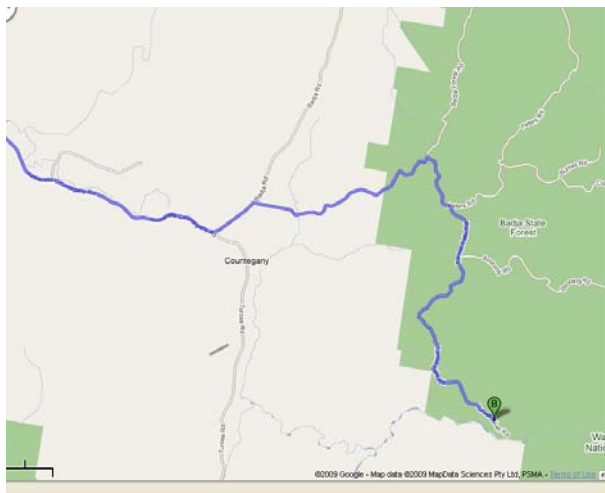
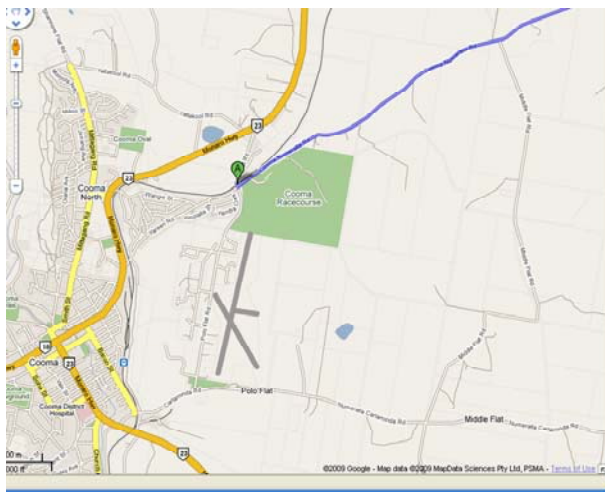
- Turn or veer Right onto Tuross Falls Road and follow till end
- Veer right to stay in the top carpark rather than go down to the campground

CARPOOLING

If you have a low, city type car, then it might be sensible to get a lift with someone with a bit more clearance. The Tuross River Road is quite passable with a normal two wheel drive, but if unsure, don't risk it. If you do want a lift, please let me know. Also, if you have a large four wheel drive and have spare space, please let me know.

QUESTIONS

If you have any questions, call Sandie on 0414 325 854



USING DIGITAL IMAGES IN DOCUMENTS, PRESENTATIONS AND DISPLAYS

Margaret Brown

Digital photographs that have been taken with a high-resolution camera using the highest resolution and quality settings are too large to be emailed directly and can be inconvenient to include in PowerPoint presentations. But it's very easy to re-size them and there are a number of ways to do so.

1. Some cameras have a function that automatically creates and saves a small copy of the picture at the appropriate resolution for emailing.
2. Most editing software has facilities for resizing digital pictures, although some applications provide few controls over the dimensions and resolution of the end result.
3. Image sharing websites like Flickr (www.flickr.com), Snapfish (www.snapfish.com.au), and PhotoBucket (www.photobucket.com) provide automatic resizing when pictures are uploaded.

However, the process is so simple and straightforward, it's worth learning how to do it yourself because then you can control exactly how large - and at what resolution - your pictures are duplicated.

Standard Picture Sizes & Resolutions

Before you start resizing pictures, it's important to know the standard resolutions for various end-uses. Essentially four resolutions are in common use:

- * 72 pixels per inch (ppi) for emails and images that will be used in web-based applications (websites, browsers, online catalogues) and screen-based viewing (computer and video monitors).
- * 92 ppi for PowerPoint presentations.
- * 96 ppi for high-definition monitors and TV screens.
- * 300 ppi for prints and documents that will be printed (see Chapter 7 on Printing Digital Photos).

When resizing pictures for viewing on a computer or TV monitor, you should also take account of the native resolution of the screen itself. Most monitors can display a range of resolutions, from 640 x 480 pixels, through to 3200 x 2400 pixels. The ideal resolution for a standard 4:3 aspect ratio display for image editing is between 1280 x 1024 pixels and 1920 x 1440 pixels. Widescreen displays typically range between 1280 x 800 pixels and 1440 x 900 pixels.

If your picture size matches the monitor's display parameters, the picture should fill the screen when it is opened. Pictures that are smaller will open at a smaller

size, while larger pictures are usually automatically re-sized to fit the screen. (This re-sizing is for display only and will not affect the actual file size.)



CHANGING THE RESOLUTION SETTING ON YOUR MONITOR DISPLAY WILL ALSO CHANGE THE SIZE AT WHICH PICTURES AND TEXT WILL BE DISPLAYED. THE IDEAL RESOLUTION FOR A STANDARD 4:3 ASPECT RATIO DISPLAY FOR IMAGE EDITING IS BETWEEN 1280 X 1024 PIXELS AND 1920 X 1440 PIXELS. (NOTE: THIS DIALOG BOX REFERS TO A DUAL-MONITOR SET-UP.)

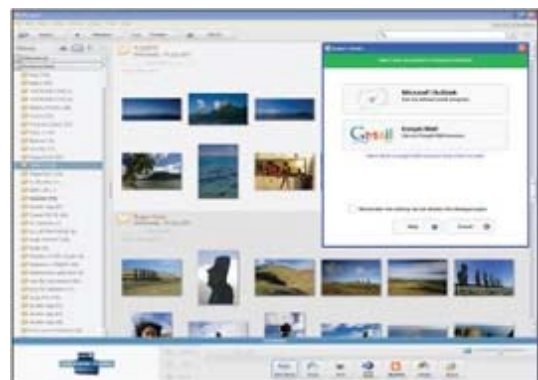
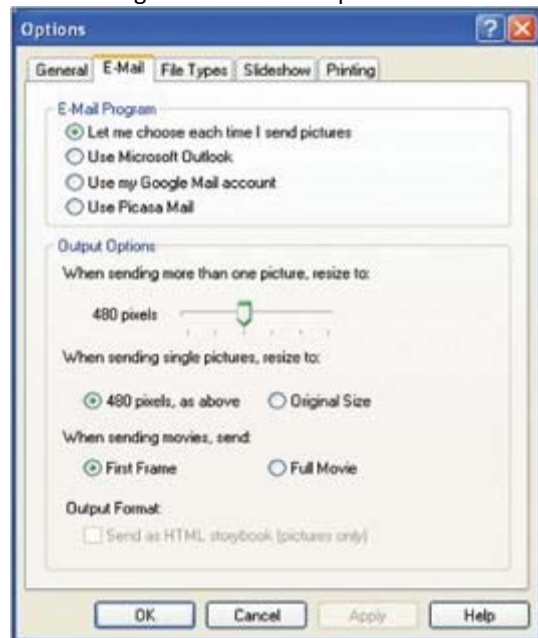
Resizing for Emails

Picasa2 (www.picasa.com) provides one of the easiest ways to re-size a batch of pictures for emailing. Simply find the album of shots you wish to send and click on Tools>Options>Email. Under the Output Options menu, set the slide bar under "When sending more than one photo, resize to:" to the desired pixel size. (The default 480 pixel width is fine for portrait-format shots but you should slide the bar to the right to a resolution setting of 640 pixels for landscape format shots.)

Clicking on OK automatically resizes the images in the folder and opens the selected email program.

Picasa2 also provides an option for sending image files at full resolution but only when images are sent one photo at a time. Video clips can also be re-sized for emailing but, because even small movie files tend to be very large, both the Picasa Mail and Gmail services limit each message to a maximum of 10 MB. (Note: Some ISPs will not allow their clients to accept such large file sizes.)

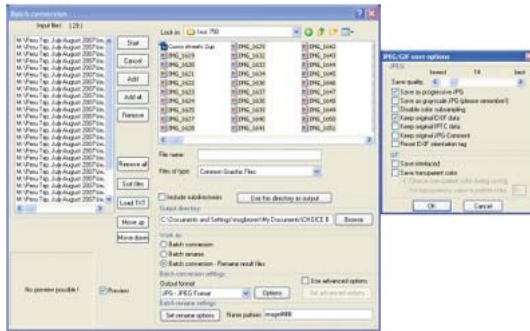
Another useful batch resizing program is Irfanview, which is available from www.irfanview.com. This freeware graphic viewer is fast and supports a huge variety of file types. It also includes an emailing facility, multimedia player, searching and printing functions. Basic editing controls are also provided.



PICASA2 WILL ALLOW YOU TO CHOOSE THE EMAIL PROGRAM FOR SENDING YOUR PICTURES.

Microsoft has a freeware 'PowerToy' application called Image Resizer that allows users of Windows XP to resize one or many image files. It's available from www.microsoft.com/windowsxp/downloads/powertoy

[s/xppowertoys.mspx](http://xppowertoys.mspx). The 521 KB file is very quick to download. Users simply right-click on the selected file(s) and choose from four different size options:



IRFANVIEW'S BATCH RESIZING FACILITIES ALLOW PHOTOGRAPHERS TO RE-SIZE MANY FILES AT THE SAME TIME.

- * Small (which fits a 640 x 480 pixel screen),
- * Medium (which fits an 800 x 600 pixel screen),
- * Large (which fits a 1024 x 768 pixel screen),
- * Handheld PC (which fits a 240 x 320 pixel screen).

No provision is made for larger screen sizes or widescreen TV sets but all four settings can be useful for re-sizing shots for emailing. Use the Handheld PC if you're emailing pictures to a camera-phone.

Resizing for PowerPoint Presentations

Microsoft's PowerPoint is a popular business tool that can also be used for creating simple slideshow-style presentations for displaying a set of photographs on a computer screen. It's best to set up a special folder containing the image files you wish to use in your presentation and then re-size these images as a batch. Match the size of the images to the screen on which they will be displayed (for example, 1024 x 768 pixels for a typical computer screen) and set the resolution to 92 ppi.

PowerPoint contains its own image re-sizing facility but it does not reduce file sizes. Consequently, if you have shot your pictures with a high-resolution camera, you will quickly reach the data-handling limit of the software.

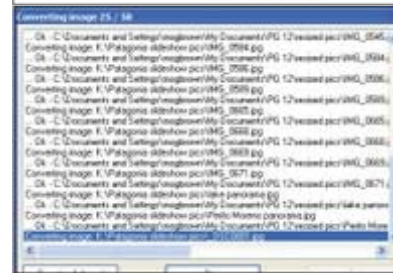
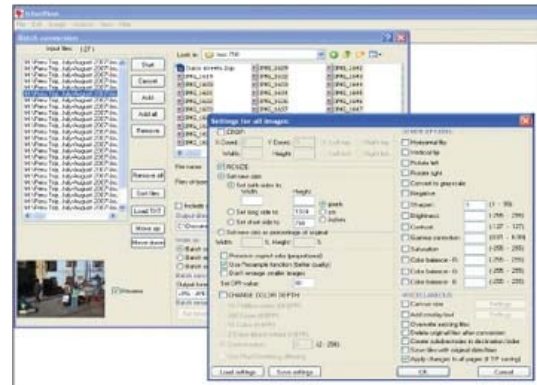
Problems are likely to occur if your presentation file is 40MB or larger. You can produce an excellent presentation that is much smaller in size by re-sizing the image files before you begin to assemble it.

Step 1: Resize the images in another application and save them in a separate folder.

Step 2: Open PowerPoint and select blank presentation, choosing the blank page from the Content Layouts menu.

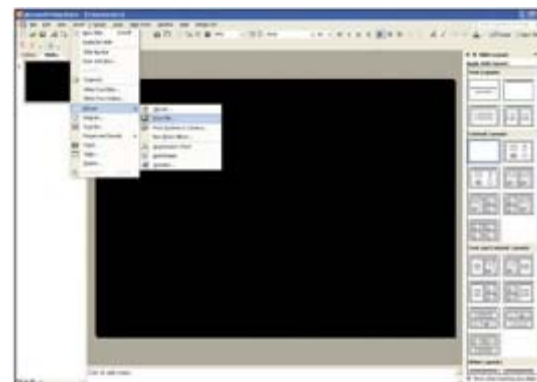
You can change the background colour by clicking on

Format>Background and selecting an appropriate background colour from the palette. (If the colour you want is not displayed, click on More Colours to access the full palette range.) Click on Apply to All.



WE'VE USED IRFANVIEW TO RE-SIZE ALL THE PICTURES IN A FOLDER AND SAVE THEM IN A NEW FOLDER, FROM WHERE WE WILL COLLECT THEM WHEN ASSEMBLING OUR POWERPOINT PRESENTATION.

Step 3: Insert your picture. Select Insert>Picture>From File. Then locate the file you wish to use in your re-sized pictures folder. Click on this picture then click on 'Insert' to superimpose the picture on the slide. If it's the wrong size, you can adjust by positioning the cursor over one of the dots on the edges of the picture and dragging them in or out. This does not adjust the actual size of the image file.





If you wish to add a title at this point, select Insert>Text Box and draw the text box over the area where you wish to locate it, keeping the mouse button held down while you position and adjust it. Then type your title into the box. PowerPoint provides a variety of text styles and colours to choose from.



Step 4: To create the next slide, click Insert>New slide and insert and position your next picture(s). It is possible to place two or more pictures on a single slide but, remember, PowerPoint does not re-size the image files so putting several pictures on one slide can create quite large files.

Step 5: When you have completed your presentation, it's worthwhile checking the file size to make sure it is not too large. Here's how to go about it:

On a Mac

1. Quit out of PowerPoint.
2. Click once on the icon for your PowerPoint presentation to select it.
3. From the File menu choose Get Info>General Information
4. In the window that appears look for the Size of the presentation

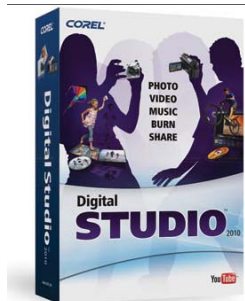
On a PC

1. Quit out of PowerPoint.
2. Right-Click on the icon for your PowerPoint presentation.
3. In the menu that appears, choose Properties.
4. In the window that appears look for the Size of the presentation.

INDUSTRY NEWS

SOFTWARE

COREL® DIGITAL STUDIO 2010



Corel Corporation (NASDAQ:CREL) (TSX:CRE) introduced its all-new photo and video product Corel® Digital Studio 2010. Now TM it is simple, fast and fun for everyone to enjoy and share their

favourite photos and videos all within one integrated and engaging environment.

Offering an elegant design and intuitive tools, Corel Digital Studio inspires creativity and confidence by making it easy for anyone to create beautiful photo and video projects with no previous experience required.

While the average family takes hundreds of digital photos and video clips each year, various research indicates that less than half edit their photos and fewer still edit their videos. As a result, digital memories sit dormant on family computers without ever being enjoyed or shared. Why? Because most people just haven't found photo editing and video editing on the PC to be the simple and rewarding experience they're looking for. Corel Digital Studio 2010 responds to this need by bringing together photo, video, DVD burning and playback, all within one easy, fun and engaging environment.

With Corel Digital Studio 2010, all your photos and videos come together in one simple creative experience. Whether you are making one-click fixes to your photos and videos, creating a photo book, making slideshows or home movies complete with your own soundtrack, or burning high-definition DVDs, you'll enjoy the same elegant look and feel across the Studio. In this integrated and intuitive environment, once you learn how to do one task,

you'll quickly know how to do them all.

"With Corel Digital Studio, PC users finally have a simple, fast and fun way to enjoy their photos and videos, and create something amazing that they can share with others," said Daniel Weisbeck, Corel's Vice President, Global Product Marketing. "With its simple, elegant design and intuitive, all-in-one approach, Corel Digital Studio removes barriers, inspires creativity and gives everyone the ability to create and share something memorable in just minutes."

Corel Digital Studio 2010 is designed to take advantage of the latest Microsoft® Windows® 7 advances including the natural, hands-on experience offered by Windows Touch. The product also offers a great creative environment for customers using Windows® XP or Windows Vista®. Corel Digital Studio 2010 is just one example of the design innovation that resulted in Microsoft naming Corel its Global ISV Consumer Partner of the Year in June 2009.

"There is no other creative software application on the market that offers consumers new and unique ways to experience creative multi-touch features complementing Windows 7 in the way that Corel Digital Studio 2010 does. Windows 7 & Corel make new things possible" Christian Georgeson, Windows Consumer Product Manager at Microsoft.

Corel Digital Studio 2010: Create Amazing Photo and Video Projects in Minutes

You don't have to master overly complex software programs or spend hours working on your projects. Corel Digital Studio is designed specifically for users who value simplicity and want results fast.

- **Movie Making Made Easy:** Finally, movie making is something everyone can enjoy. With its simple interface and intuitive controls, Corel Digital Studio offers a groundbreaking, visual approach to video projects that makes it easy for anyone to enhance and share favourite video memories -- even in HD.
- **Creative Photo Projects:** Thrill friends and family with beautiful photo books and calendars that you can create in just minutes from within Corel Digital Studio. There's no lengthy online uploading process to slow you down when you want to get creative. Instead, you can focus on your memories, create your project and when you're done, print at home or have your creation professionally printed using Corel's online service.*

- **All Your Media in One Place:** The Media Organizer brings all your photos and videos together so you can more easily search, find and organize your favorite memories. You can also access your music library to add your own personal soundtrack to slideshows and home movies. The Media Organizer is the starting point for all your projects, making it easy to move from one task to another.
- **Online Sharing Has Never Been Easier:** Share your files and projects any way you choose. Use email, Flickr , Facebook and YouTube , or send to your TM TM TM mobile device. With Corel Digital Studio, connecting with friends and family is just a few clicks away.
- **Simple Backup and Burn:** Backup and protect your photo and video memories, burn a professional looking DVD complete with Hollywood-style menus, or create audio CDs and MP3 discs by simply dragging and dropping. It's never been this easy.

Pricing and Availability

Corel Digital Studio 2010 is now available globally in English, German, French, Italian, Dutch, Spanish and Chinese Traditional as an electronic software download (ESD) at a SRP of £59 incl. VAT. Corel Digital Studio 2010 will also be available at leading retailers around the world starting in mid-September 2009. For more information, to purchase an ESD or download a free, fully featured 30-day trial, please visit www.corel.com. The individual photo and video components of Corel Digital Studio 2010 can also be purchased as standalone products. Corel® PaintShop Photo Express 2010 is available TM at a SRP of £29 incl. VAT and Corel® VideoStudio® Express 2010 £39 incl. VAT.

EQUIPMENT

SIGMA 70-300MM F4-5.6 DG OS *Compact, optically stabilised, telephoto zoom lens*



Sigma released a new 70-300mm F4-5.6 DG OS. This telephoto zoom lens incorporates Sigma's original OS (Optical Stabiliser) function and is

housed in a compact construction.

The OS function offers the use of shutter speeds approximately 4 stops slower than would otherwise be possible. It makes telephoto shooting easy for many types of photography such as sport and nature. For Sony and Pentax mount, the built-in OS function of this lens can be used even if the camera body is equipped with an anti-shake function. As compensation for camera shake is visible in the view finder, the photographer can easily check for accurate focus and ensure there is no subject movement.

The SLD (Special Low Dispersion) glass element provides excellent correction for all type of aberrations. The Super Multi-Layer Coating reduces flare and ghosting and provides high contrast images throughout the focal range.

The lens has an overall length of 126.5mm (5.0"), maximum diameter of 76.5mm (3.0") and weight of just 610g. Its compact construction makes it convenient for travel and hand held telephoto photography. This lens' rounded 9 blade diaphragm creates an attractive blur to the out of focus areas of the photograph.

This lens has a minimum focusing distance of 150cm (59.1") throughout the entire zoom range and a maximum magnification ratio of 1:3.9, making it ideal for close-up photography.

Features:

- ☑ Equipped with Sigma's own OS (Optical Stabiliser) function
- ☑ SLD glass for excellent correction of aberrations
- ☑ Super Multi-Layer Coating reduces flare and ghosting
- ☑ Compact construction
- ☑ For use with full frame and APS-C digital SLRs

PANASONIC DMC-GF1, A NEW CAMERA FOR THE LUMIX G MICRO SYSTEM



Panasonic has added a powerful new model, the DMC-GF1, to its LUMIX G Micro System lineup of next-generation digital interchangeable lens system cameras. Distinguished by an artistic flat body that is both elegant and compact, the new DMC-GF1 debuts as the world's smallest and lightest system camera with a built-in flash*1. The new GF1 takes its place as the third model in the revolutionary G series of digital interchangeable lens system cameras based on the Micro Four Thirds system standard. Panasonic took the market by storm with the series' first model – the DMC-G1, with its convenient size and brilliant image quality. The company broke more new ground when it launched the DMC-GH1, which added creative AVCHD full-HD movie recording.

The newest family member DMC-GF1 is sophisticated in form, offers an extensive function set, provides uncompromising performance, and delivers the ultimate in operating and shooting ease. The GF1 thoroughly optimizes the advantages of a system camera to assure outstanding image quality. It can record both vivid still shots and smooth, beautiful motion pictures. The GF1 features the advanced AVCHD Lite movie mode, which is ideal for recording extended HD movies and networking with other AV devices, and it can also record in the Motion JPEG format, which offers wide compatibility with PCs.

As the "artistic flat" body description suggests, the slim GF1 puts a palette of creative possibilities in the user's hands. When shooting either still photos or movies, for example, users can select from several preset filters in My Colour mode or apply a range of unique textures available in Film mode.

In addition to a host of beginner-friendly shooting assisting functions, such as LUMIX's popular iA (Intelligent Auto) mode, the DMC-GF1 also comes with unique functions including exposure meter, aperture preview and shutter speed preview through the live view. A number of accessories, starting with the Live View Finder which provides full-time live view, makes photography more fun while expanding the user's artistic capabilities.

With its unlimited possibilities and choice of three attractive body colours, the easy-to-carry GF1 will please users of every level. Experienced photographers will find the GF1 an ideal everyday camera in the bag anytime and those new to system cameras will find that it gives them the potential to explore realms of photography far beyond the limits of compact cameras.

The world's smallest and lightest digital interchangeable lens camera with built-in flash in an artistic flat design*1

The GF1 does away with the pentaprism found on other standard interchangeable lens cameras. This mirror-less structure helped Panasonic achieve a neo-classic body design that dramatically reduces both size and weight. Designed for maximum thinness, the GF1 reduced 35% in the volume and 26% in the weight of the DMC-G1, up until now the most compact G model.

While the GF1 is small in size, it does not compromise on functions. It comes equipped with a built-in flash. It boasts a large, 3.0-inch Intelligent LCD with a wide viewing angle and full 460,000-dot resolution. Users enjoy vivid, exceptionally detailed images both when shooting and when viewing the results. The Intelligent LCD also offers extremely fine, automatic backlight control, which combines with the high resolution to assure outstanding viewing in everything from sunny outdoor conditions to dim indoor situations. The GF1 is compatible with an optional Live View Finder(DMW-LVF1), which provides the full-time live view function boasting 100% field of view regardless of the lens to attach.

Panasonic paid meticulous attention to operating ease when designing the GF1. The drive mode lever and rotary/click dial are considerately placed for operation with minimal finger movement. The precise button placement and simple, logical menu interface work together to make operation easy and intuitive.

LUMIX G Micro System cameras come in a choice of body colours: true black, active red and sleek silver. With other body parts crafted of finely textured aluminum, G series cameras have a high-quality appearance to be attractive while it is exceptionally practical design. The DMC-GF1 is absolutely the camera that gives every photographer a pleasure to own.

High image quality as an interchangeable lens system camera

While achieving breakthroughs in advanced functions and compactness of design, Panasonic also refined its comprehensive digital imaging technologies. As a result the level of image quality that rivals or even surpasses D-SLR cameras. The 4/3-type 12.1-megapixel Live MOS sensor featured in the DMC-GF1 offers the best of both worlds - the superior image quality of a CCD sensor, and the lower power consumption of a CMOS sensor. Advanced technology that makes it possible to read 4 channels of data simultaneously also helps the GF1 deliver 60 frames-per-second Full-time Live View images, while faithfully reproducing high-resolution images with fine detail and rich gradation.

For the image processing LSI, the new Venus Engine HD features exceptionally advanced signal processing capabilities. This sophisticated LSI separates chromatic noise from luminance noise and applies the optimal noise reduction to each, so you capture clear and beautiful images even when shooting at high ISO sensitivity levels. The Venus Engine HD also provides independent gradation control for each of the R, G and B colours, so even delicate colour nuances are reproduced faithfully. Linking smoothly with the Live MOS sensor, the Venus Engine HD records stunning high-resolution 12-megapixel images with exceptional accuracy. Signals containing a large amount of image data are sent from the Live MOS sensor to the optional Live View Finder at 60 fps, resulting in clear, smooth live view. The Venus Engine HD also supports an extensive range of functions, including HDMI output.

The cameras of Lumix G Micro System are equipped with a highly efficient Dust Reduction system, If dust or other foreign matter gets inside the camera when you're changing lenses, it could cling to the image sensor and show up as a spot in your photos. The Dust Reduction System in the GF1 helps eliminate this possibility by placing a supersonic wave filter in front of the Live MOS sensor. Vibrating vertically around 50,000 times per second, the filter repels dust and other particles effectively.

A pallet of options to stimulate photographers' creativity

The DMC-GF1 is artistic not only in form, but also in function. It provides an array of features that let users either capture precisely true-to-life images or create their own beautifully expressive images. The GF1 newly features My Colour mode with a total of seven preset effects – Expressive, Retro, Pure, Elegant, Monochrome, Dynamic Art, and Silhouette while inheriting the previous Custom mode, which lets users manually set the colour, brightness and saturation levels.

With the Live View function, users can see how these settings will affect the photo before they shoot, making it easier to capture the exact mood or atmosphere desired. For even more elaborate effects, users can choose from a total of nine Film modes, and set the contrast, sharpness and saturation levels for each. A custom function lets users store their favorite settings in memory. The GF1 also provides a total of 16 Scene modes, including a new Peripheral Defocus mode that keeps the subject in sharp focus while gently softening the focus around it. These modes can be used when shooting motion images too, letting users create movies with dramatic, theatrical effects without having to edit after they shoot.

The exposure meter can be displayed in the P/A/S/M shooting modes. The correlation between shutter speed and aperture is shown, with a colour-coded warning that alerts users when the settings are not in the proper range. For newcomers to system camera photography, this makes it easy to learn proper settings both visually and logically, enhancing their photography skills.

Take motion picture recording to the next-level with new generation AVCHD Lite

The DMC-GF1 can record 1280 x 720 high-definition motion picture in AVCHD Lite that features long recording time and high compatibility with audio-visual equipments. Users can enjoy recording HD motion images taking maximum advantage of lens' descriptiveness and interchangeability or the large sensor size. The action starts at a single press of a dedicated button on the top while most of the settings for photo recording are succeeded, which is convenient when you record the same subject at the same situation in both photo and movie. HD Motion JPEG in 1280 x 720 can also be selected as an alternative movie recording format in addition to QVGA, VGA and WVGA, which is more compatible with PCs.

Even video beginner can record excellent movies with DMC GF1 because the popular iA (Intelligent Auto) is also available motion image recording. Optical Image Stabilizer (O.I.S.) helps prevent handshake when using high-powered zoom. Face Detection automatically detects a face in the frame and adjusts focus, exposure, contrast, and skin complexion on it so it always turns out beautifully. Intelligent Exposure continually checks the ambient light level and adjusts the exposure setting as conditions change to prevent blown highlights and blocked shadows. And Intelligent Scene Selector automatically switches between Normal, Portrait, Macro, Scenery, and Low Light modes according to the situation to optimize visual quality.

The GF1 also provides a colour mode, film mode and carries over 11 different scene modes from photo scene modes in movie recording. Motion picture Program mode that lets you change the aperture and the shutter speed for more creative HD movie recording. You can try professional-like movie recording with these variety of options like you do with photo recording.

In AVCHD Lite recording, you can select from three levels of motion image quality: SH (17 Mbps), H (13 Mbps) and L (9 Mbps). A Wind Cut function is also available to block out most of the noise from background wind.

- Some functions may not be available depending on the lens that is mounted.
- When you set the picture quality to HD, WVGA or VGA, we recommend using a high-speed card with "10MB/s" or greater displayed on the package.
- Motion pictures can be recorded continuously for up to 29 minutes 59 seconds in some countries.
- Continuous recording exceeding 2GB is not possible when recording motion JPEG. Remaining time for continuous recording is displayed on the screen.
- AVCHD Lite motion images recorded onto an SD Memory Card or a DVD disc cannot be played from a device that does not support the AVCHD standard.

Contrast AF system to realize advanced functions

The contrast AF system adopted in the DMC-GF1 features not only the accuracy but also the industry's fastest level of high-speed, (e.g. Approx. 0.3 sec with a Lumix G standard zoom lens H-FS014045.) There are many reasons to employ contrast AF for its focusing system, including full-time live view.

Users can choose from a wide range of AF modes, including multiple-area AF with up to 23 focus areas, 1-area AF with a selectable focus area, Face Detection, and AF Tracking. In the 1-area AF mode, the AF frame size can be changed by simply turning a dial. The GF1 also has a Quick AF function that begins focusing as soon as the user aims the camera - no waiting for the user to press the shutter button halfway. This provides a quicker focusing that can help capture the subject before the crucial moment passes. Continuous AF keeps the subject in focus at all times. With the GF1's many auto focus modes, there's an option that's just right for any shooting situation.

Great photography is not only from a professional photographer - iA(Intelligent Auto)mode

The DMC-GF1 has advanced functions that will satisfy experienced photographers, yet is easy enough for beginners to use comfortably. It's ideal for compact camera owners who want to step up to higher-quality photos – but without having to carry a bulky, heavy camera. Panasonic achieved this superb ease of use by continuing to improve iA mode – with its shooting assist functions that have proven extremely popular in LUMIX compact cameras – and adding it to the LUMIX G Micro System's advanced imaging technologies.

With the Face Recognition*2 function, up to six people's faces can be registered, and up to three can be simultaneously recognized to show their names once registered. Three face images can be registered for each person, to dramatically raise the detection

accuracy. Once completed, if the familiar face appears into your frame again, the camera will display the name you specified for the person and prioritize focus and exposure so that the registered face is bright and in sharp focus.

You can also specify the age of the registered subject and have both the name and the age of the subject stamped onto your photos. In playback, you can choose to display only photos that contain a specific registered face using Category Playback. You can also view image slideshows of only a selected person. Face recognition makes sorting archiving incredibly easy. This advanced face detection system also digitally corrects unwanted red-eye during recording.

With AF Tracking, the GF1 can lock onto any subject and keep it in focus even if it moves - making it easy to get beautiful, clear shots when a great photo opportunity suddenly arises. Simply aim, lock, and shoot.

In addition to the advanced functions mentioned above, the iA mode inherits fundamental functions users need in a good digital still camera. These include MEGA O.I.S., which helps prevent blurring from hand-shake, and Intelligent ISO Control, which reduces motion blur by adjusting the ISO sensitivity if the subject moves as the shot is taken.

Intelligent Exposure optimizes the exposure for each part of an image, preventing blocked shadows and blown highlights and helping ensure that gradation and details are reproduced beautifully. It now features an automatic backlight compensation function that activates whenever the camera detects the subject is in backlight. Intelligent Scene Selector automatically detects the four most common shooting situations - Portrait, Scenery, Close-up and Low-light - and switches to the appropriate Scene mode.

The user can activate all of these useful, convenient shooting-assist functions by simply selecting iA mode.

Rich options for expandability

The Micro Four Thirds System products are joining today's Four Thirds System products to provide customers with even higher levels of performance in a digital interchangeable lens camera. In addition to LUMIX G lenses, the LUMIX DMC-GF1 and LUMIX G Micro System can use any interchangeable lens that complies with the Four Thirds standard via an optional mount adaptor DMW-MA1 and with the prestigious Leica M/R Lenses via DMW-MA2M or MA3R.*3 This gives the user access to a huge range of compatible lenses.

With the LUMIX G Micro System and the growing

assortment of lenses becoming available, the expressive possibilities are unlimited. The LUMIX DMC-GF1 system camera offers a wide variety of options to choose from to match every shooting situation and shooting style. Notably, the hot shoe on the top lets you attach the optional tilt-shift Live View Finder (DMW-LVF1) of 1.04x (0.52x*3), 202,000-dot, 100% field of view.

Accessories*4:

- Live View Finder: DMW-LVF1 NEW
- External Flash: DMW-FL220(GN22) / DMW-FL360(GN36) / DMW-FL500(GN50)
- PL Filter: DMW-LPL46
- ND Filter: DMW-LND46
- MC Protector: DMW-LMC46
- Mount Adapter: DMW-MA1, DMW-MA2M, DMW-MA3R
- Battery Pack: DMW-BLB13
- DC Cable: DMW-DCC3
- Remote Shutter: DMW-RSL1
- Leather Lens Case(for GF1 with 20mm lens): DMW-CGL1 NEW
- Leather Lens Case(for GF1 with 14-45mm lens): DMW-CGL2 NEW
- Soft Case: DMW-CG3 NEW
- Leather Body Case: DMW-CGB1
- Soft Bag: DMW-BAG1, DMW-BAL1
- Shoulder Strap (Stylish): DMW-SSTG1-A/C/R/K
- Shoulder Strap (Woven): DMW-SSTG2-W
- Shoulder Strap (Leather): DMW-SSTG3-T
- Shoulder Strap (Leather): DMW-SSTL1

HD photos and HD movies with VIERA Link networking

Both still images and motion images in AVCHD Lite recorded on SD Memory Cards are easy to view on a Panasonic VIERA TV with dynamic full-HD resolution. The user simply inserts the card into the VIERA Image Viewer (SDHC/SD card slot) on a VIERA TV or DIGA Blu-ray Disc Player to play the content. Alternatively, an optional mini HDMI cable can be used to output still and motion images recorded with the LUMIX DMC-GF1 directly to the TV for easy VIERA Link operation.

This makes it possible to take maximum advantage of the camera's playback functions, including slideshows in which both still and motion images are played sequentially, or calendar displays and so on. All control is possible using only the TV's remote control.

In addition, with the included software PHOTOfunSTUDIO 4.0 HD Edition, it is easy to view and edit your recorded contents. You may also choose to upload your videos to YouTube or burn them to a DVD disc for archiving.

About Included Software PHOTOfunSTUDIO 4.0 HD Edition

The latest version of the exciting bundled software PHOTOfunSTUDIO 4.0 HD Edition allows you to view, edit and archive your captured contents with greater ease and fun. The new PHOTOfunSTUDIO 4.0 HD Edition features dramatic speed-up of operation by achieving 10x as fast as the previous edition for start up and 8x for initial image registration process*5. The GUI is re-designed by adopting simple graphic elements and layouts as well as the incorporation of wizard method, making the operation more intuitive and extremely easy.

Still and motion images can be transferred to the PC via a USB cable for viewing and archiving on the PC with the PHOTOfunSTUDIO 4.0 HD Edition installed. Using PHOTOfunSTUDIO 4.0 HD Edition, you can edit and remove unwanted portions of your video clips recorded in AVCHD Lite. Contents recorded in AVCHD Lite can be burned directly onto a DVD for viewing on a Blu-ray Disc player*6. Alternatively, you can use the software to convert your contents to MPEG2 format to burn onto a DVD.

The portrait images taken with the camera's Face Recognition function are organized neatly in the folder of the name registered with the camera. Not only that, the software also features an independent Face Recognition function that recognizes the faces in the picture stored in your PC to sort the photos by the face speedily. You do not have to pick out each photo one by one out of thousands of photos when you only want pictures of a specific person. With PHOTOfunSTUDIO 4.0 HD Edition, the software automatically sorts your images into virtual folders based on the faces you registered. You can also enjoy slideshows with a variety of effects and use your iTunes music library as background music. Motion pictures can be uploaded directly to YouTube using the built-in YouTube uploader.

*1 For a system camera with a built-in flash as of September 2, 2009

*2 Turn Face Recognition item ON and register the person with full-face portrait on the shooting menu in advance. Refer to back page for detail. Some functions in iA mode may not be available depending on the lens that is mounted.

*3 35 mm camera equivalent. Some functions on the DMC-GF1 are not available depending on the lens that is mounted.

*4 Some accessories are not available in some countries.

*5 Panasonic in-house comparison. The speed may vary depending on the specifications of PC and the number of images stored in the PC and other condition.

*6 AVCHD Lite motion images recorded onto an SD

Memory Card or a DVD cannot be played on a device that does not support the AVCHD standard.

NEW LENSES FOR THE LUMIX G MICRO SYSTEM

LUMIX G 20MM / F1.7 ASPH LENS



Panasonic unveiled a new pancake interchangeable lens called the LUMIX G 20mm / F1.7 ASPH. (35mm camera equivalent: 40mm) as a new member of the LUMIX G Micro System. The new LUMIX G 20mm / F1.7 ASPH. Features a dramatic compactness and light weight despite its F1.7 brightness allowing a beautiful soft focus for photos to be even more impressive.

Comprising of seven lenses in 5 groups, the new lens system uses two aspherical lenses most effectively to minimize both distortion and chromatic aberrations, achieving super high resolution corner to corner. The versatile 20mm of focal distance (Equivalent to 40mm on a 35mm film camera) is suitable for wide variety of occasions from daily snapshots including sceneries like sunsets and dimly lit indoor shots to the deliberately creative shots taking advantage of its beautiful soft focus.

When mounted on the LUMIX G Micro System Cameras, the LUMIX G 20mm / F1.7 ASPH. allows use of the advanced contrast AF system, which includes a Face Recognition function, for more convenient, more enjoyable shooting.

Seven blades give the aperture a rounded shape that produces an attractively smooth effect in out-of-focus areas when shooting at larger aperture

settings. The new LUMIX G 20mm / F1.7 ASPH. lens also features a highly reliable metal mount, and uses multi-coated lens elements that minimize ghosts and flare to further enhance its optical performance.

LEICA* DG MACRO-ELMARIT 45MM / F2.8 ASPH. / MEGA O.I.S.



Panasonic also unveiled a new macro lens of world renowned Leica name LEICA* DG MACRO-ELMARIT 45mm / F2.8 ASPH. / MEGA O.I.S. (35mm camera equivalent: 90mm) for another member of the LUMIX G Micro System.

Awaited long from enthusiastic photographers worldwide, the new LEICA DG MACRO-ELMARIT 45mm / F2.8 ASPH. / MEGA O.I.S. boasts a superb image quality with minimum distortion, chromatic aberrations as well as ghosts and flares that passes a stringent Leica standard to goes beyond their expectations.

The new lens system uses both an aspherical lens and an ED len in its fourteen lenses in ten groups to realize outstanding compactness, taking advantage+ of the Micro Four Thirds standard to achieve dramatic downsizing while minimizing distortion and chromatic aberration.

Panasonic's Mega O.I.S. (Optical Image Stabilizer) suppresses the blurring that is commonly caused by hand-shake, making it easy to shoot clear shots for sharply focused macro shot or in dimly lit places without using a tripod.

It incorporates inner focus system of three groups of floating structure, which enables excellent resolution and contrast without changing its overall length from full life-size magnification to infinity. The inclusion of stepping motor makes the focusing action smooth and silent for use in both photo and movie recording.

The closest focusing distance can be instantly changed to 15cm or 50 cm(0.5 ft to 1.64 ft) with the switch on the lens barrel according to the shooting opportunity. The LEICA DG MACRO-ELMARIT 45mm / F2.8 ASPH. / MEGA O.I.S. lens also excels in portraits, middle-range snapshot, or landscapes in addition to the original full life-size macro shots.

When mounted on the LUMIX G Micro System Camera, the new lens allows use of the advanced contrast AF system, which includes a Face Recognition function, for more convenient, more enjoyable shooting. Seven blades give the aperture a rounded shape that produces an attractively smooth effect in out-of-focus areas when shooting at larger aperture settings.

The new LEICA DG MACRO-ELMARIT 45mm / F2.8 ASPH. / MEGA O.I.S. lens also features a highly reliable metal mount, and uses multi-coated lens elements that minimize ghosts and flare to further enhance its optical performance.

* LEICA is a registered trademark of Leica Microsystems IR GmbH. ELMARIT is a registered trademark of Leica Camera AG. The LEICA DG lenses are manufactured using measurement instruments and quality assurance systems that have been certified by Leica Camera AG based on the company's quality standards.

** Four Thirds™ and Micro Four Thirds™, and Four Thirds and Micro Four Thirds Logo marks are trademarks or registered trademarks of Olympus Imaging Corporation, in Japan, the United States, the European Union and other countries

TAMRON LAUNCHES STABILIZED 17-50MM F2.8 ZOOM



Tamron has announced a revised version of its popular 17-50mm F2.8 fast standard zoom for APS-C/DX SLRs, which now incorporates optical image

stabilization (or as the company calls it, Vibration Compensation). The SP AF 17-50mm F/2.8 XR Di II VC LD Aspherical [IF] offers a useful wide angle to short telephoto range of 26-78mm (35mm equivalent) in a compact design scarcely larger than its unstabilized predecessor. The 19 element / 14 group optical design employs a host of special elements to minimize aberrations, and features a minimum focusing distance of 0.29m over the entire zoom range, with a maximum magnification of 0.21x. It will be available in Nikon mount (with a built-in focusing motor) from mid-September, with a Canon version to follow.

CANON LAUNCHES THE EOS 7D



Canon unveiled the EOS 7D digital SLR camera – a completely new design to meet the specific demands of photographers. Incorporating a new 18MP APS-C CMOS Sensor, developed by Canon, the EOS 7D also features: Dual “DIGIC 4” processors to offer fast, high-quality performance in all light conditions, an ISO range expandable to 12,800 and continuous shooting at 8 frames per second – without the need for additional accessories. Impressive technologies are matched by excellent build-quality designed with the photographer in mind – to create a whole new photographic experience.

During extensive development Canon went back to the drawing board, listening to photographers worldwide in order to design the EOS 7D to meet their specific needs. Commenting on the creation of the EOS 7D, Mr. Shinbori, Deputy Group Executive of Photo Products Group & Senior General Manager of Camera Development Center, Canon Inc, said “We consulted over 5,000 photographers worldwide and asked them what they most wanted to see from a camera. Matching this insight with cutting-edge technology, we were able to develop a camera that truly gives photographers the versatile tool they require to experiment with their images.”

Accurate Images – High performance AF and metering systems

The EOS 7D features a 19-point cross-type AF sensor, enabling photographers to achieve accurate shots and optimise composition options. This improved AF system offers a range of manual and automatic settings including Zone and Spot AF to track and capture subjects quickly and accurately. AF settings are highly customisable, allowing for rapid reaction to changes in the scene. Different AF points can be set for vertical or horizontal orientation, so photographers can automatically switch between landscape and portrait shots without touching a

button.

The EOS 7D also incorporates a new metering system. The Focus Colour Luminance metering system (iFCL) intelligently measures focus, colour and luminance, across 63 zones. Complementing the 19 AF points, the dual layer sensor is able to gather information from each distinct zone to obtain a more accurate and consistent exposure.

Capture images exactly as you see them

The Canon EOS 7D features an Intelligent Viewfinder that offers photographers 100 per cent frame coverage. With 1.0x magnification* - a first for EOS - photographers see a large bright image that helps to fully immerse them within the shot. A transmissive LCD incorporated in the viewfinder allows photographers to choose between various overlay features - such as AF points, the spot metering circle and composition grid – providing a range of tools that help when framing a shot. The EOS 7D is also the first EOS to introduce a Dual-Axis Electronic Level – in the viewfinder and on the LCD - that indicates both pitch and roll angles. This feature is particularly useful when shooting landscapes to ensure a level horizon, or when used in conjunction with a Tilt and Shift lens to level the camera.

The camera features a new 3 inch Clear View II LCD screen with a solid structure screen, designed to combat glare by removing the air-gap between the LCD’s protective cover and the liquid crystal. This new screen has a viewing angle of 160 degrees and is effective even in bright light. As with the EOS 5D Mark II, an ambient light sensor on the side of the screen can set brightness automatically depending on the environment.

Experiment creatively with light

The Canon EOS 7D is equipped with an Integrated Speedlite Transmitter. For the first time in an EOS, photographers can control external Speedlites with no additional accessories - ideal for those looking to experiment with creative lighting set-ups. The EOS 7D also features an extensively upgraded, built-in flash including manual control, and wider flash coverage to cover focal lengths as wide as 15mm.

Customise your individual camera experience

The EOS 7D has been conceived and designed with the photographer’s needs in mind. The look and feel of the camera has been aesthetically and ergonomically crafted to offer photographers the very best interaction. To this end, the photographer can design their own experience – camera operations are customisable, allowing the user to assign frequently used functions and settings to convenient controls. This enables photographers to

save time when shooting critical moments, by changing settings quickly.

Impressive Features, Impressive Images

The Canon EOS 7D is packed with new features:

- **18 MP APS-C CMOS Sensor**
Designed and manufactured by Canon, the sensor produces an outstanding image and offers fantastic performance at high and low conditions, thanks to a new photodiode and microlens construction.
- **8 fps image capture**
Enabled by the Dual "DIGIC 4" processors and improved electrical system, photographers can capture images at 8fps, without the need for additional accessories and in all file types.
- **ISO Range**
The EOS 7D enables photographers to capture subjects in their natural light. The ISO range (100 – 6,400) is expandable to 12,800.
- **EOS Movie**
With improved operation, making it easy to switch directly to movie mode, it is now even simpler to shoot Full HD video. Users can set exposure and frame rate – with options for 24 fps to create that cinematic feel.
- **Dual "DIGIC 4" processors**
By utilising Dual "DIGIC 4" processors, users of the EOS 7D never have to compromise between shooting speed, image quality and ISO performance.
- **Impressive Design**
Canon has listened to photographer feedback when designing the body, as well as the internal technologies. A magnesium alloy body offers environmental protection – the tough, lightweight construction is designed to defend against moisture, and dust – equivalent to the legendary EOS-1N.

The camera is compatible with a wide range of accessories so it can easily be integrated with a photographer's workflow. The Wireless File Transmitter (WFT-E5) allows extensive camera control via a web browser – allowing photographers to control the camera using a web-enabled mobile device.

The EOS 7D is compatible with all EF and EF-S lenses as well as Canon EX Speedlites. The Canon EOS 7D can also be used with Battery BG-E7, and remote controllers and switches such as the remote Controller RC-1/RC-5.

* with 50mm lens at infinity, -1(1/m) dpt

Technologies Explained:

Canon CMOS sensor

The EOS 7D includes a new 18 megapixel CMOS sensor with a wide ISO range that delivers excellent results in both the low and high-speed ranges as well as improved image quality. The sensor is a standard APS-C size (22.4x14.9mm) and produces an effective field of view of 1.6x the lens focal length.

The EOS 7D sensor features condensed circuitry with improved sensitivity and increased capacity of the photodiodes, which enables shooting at high ISO and prevents overloading when shooting in bright conditions. The ISO range (100 - 6400) is expandable to 12800 enabling photographers to capture subjects in their natural light without the use of a flash.

The EOS 7D sensor includes gapless microlenses that have been moved closer to the photodiodes. These technological advances, which were developed and manufactured by Canon, improve the signal to noise ratio creating very clean high ISO images.

19-point cross-type AF system including Spot AF

The AF system has been completely redesigned using the same architecture as the EOS-1 series and includes a separate processor to handle AF calculations. This, along with AI SERVO II AF, enables the EOS 7D to offer accurate, reliable and continuous shooting at 8fps. Uniquely at this level, all 19 points in the EOS 7D AF sensor are cross-type points with f/5.6 or faster lenses, which allows sophisticated tracking, accuracy and performance throughout the frame.

EOS 7D also includes Spot AF, a new mode that uses a smaller area of the sensor to determine focus. This is useful for small subjects where there is background detail that can distract the AF sensor. It also includes Zone AF which limits automatic selection to one of five zones. This allows photographers to ensure their subject is automatically selected.

iFCL metering system with 63-zone Dual-layer Sensor

The iFCL system uses Focus, Colour and Luminance information to determine consistently exposed shots. All focus points provide distance information to the metering system to determine proximity to the subject and allow the algorithm to weight the exposure accordingly. EOS 7D has a completely new metering sensor with 63 zones compatible with 19 AF points. Typically, metering sensors are more sensitive to red subjects which can lead to overexposure. EOS 7D combats this with the dual layer sensor, which has one layer sensitive to red and green light and one that is sensitive to blue and green light. The metering algorithm then compares the level of the two layers and adjusts the meter reading accordingly.

100% Viewfinder with 1.0x magnification and built in LCD overlay

The EOS 7D features a high quality viewfinder with 100% coverage and 1.0x magnification - a first for EOS - making it simple and ease to use. The viewfinder uses a prism, coating technologies and eyepiece lenses inspired by the EOS-1 series.

EOS 7D viewfinder does not have interchangeable focussing screens. In their place is a Transmissive LCD Screen - another first for EOS. Through technological advances Canon has been able to implement the screen whilst maintaining viewfinder image quality. This new feature, which can be illuminated in lowlight, enables grid, spot metering and AF points to be superimposed upon demand.

EOS Movie

The EOS 7D features an improved movie function allowing users to record Full HD movies with full manual control and selectable frame rates. The operation of the movie function has been improved to make it easier to use via direct access to settings with dedicated buttons. AF can now be started by either half pressing the shutter button or using the AF-ON button as before.

The exposure of the movie can be controlled in Manual mode allowing full control of shutter speeds and apertures. It is possible to select frame rates from: 30 (29.97), 25, and 24 (23.976), with 60 (59.94) and 50 available at 720p. ISO can be set automatically or manually in the range (100-6400) and is expandable to 12800. EOS 7D also allows users to trim and cut their movies.

Dual "DIGIC 4"

EOS 7D is fitted with Dual "DIGIC 4" processors; the power of the processors enables more advanced processing algorithms allowing the camera to achieve a high performance 8fps at 18 megapixels. DIGIC 4 removes the highly noticeable colour noise as well as reducing luminance noise without loss in detail, allowing for very clean high ISO images. Even at ISO 6400 noise levels are similar to those of ISO 1600 from DIGIC III. Auto Lighting Optimiser is now also available during manual exposure, without any drop in performance.

DIGIC 4 also allows UDMA cards (mode 6) to be used at their full speed, which allows the EOS 7D to take advantage of the fastest cards available.

Clear View II

EOS 7D's 3 inch LCD monitor has 920,000 dots (VGA resolution) with a viewing angle of 160°. Clear View II has been designed to combat glare by removing the air-gap between the LCD's protective cover and the liquid crystal. The air-gap is filled with an elastic optical material. This has the affect of suppressing the reflections from the surface of the liquid crystal, caused by the sharp change in refractive index, as light travels through the air-gap. In order to protect the liquid crystal from scratches the Clear View II LCD features a hardened glass cover material. As with the

EOS 5D Mark II, an ambient light sensor on the side of the screen can set brightness automatically depending on the environment.

Pre-IFA 2009: Along with the EOS 7D, Canon has announced two EF-S, APS-C lenses. The EF-S 15-85mm F3.5-5.6 IS USM is as a high quality standard zoom designed to complement the EOS 7D. It offers a flexible 24-136mm (35mm equivalent) range and offers image stabilizer with a claimed effectiveness of 4 stops. It also includes ring-type USM and a close focus distance of 0.35m through the entire zoom range. Also bolstering Canon's EF-S range is the 18-135mm F3.5-5.6 IS USM, which covers a 29-216mm (35mm equivalent) range and with a claimed 4-stop image stabilizer and a minimum focus distance of 0.45m.

Jump to:

- [Additional images and Specifications \(EF-S 15-85mm f/3.5-5.6 IS USM\)](#)
- [Additional images and Specifications \(EF-S 18-135mm f/3.5-5.6 IS\)](#)

CANON LAUNCHES TWO VERSATILE LENSES FOR IMPRESSIVE EVERYDAY USE

Canon strengthened its EF-S series of lenses with the launch of two powerful standard kit lenses for EOS EF-S camera owners: the EF-S 18-135mm f/3.5-5.6 IS and the EF-S 15-85mm f/3.5-5.6 IS USM. Both lenses match the style and performance of Canon's new APS-C sensor camera – the Canon EOS 7D.

The high performance standard zoom lens

The high-quality EF-S 15-85mm f/3.5-5.6 IS USM is equivalent to a 24-136mm focal length lens (5.6x standard



zoom). Designed for EOS EF-S mount bodies the lens covers wide angle and portrait focal ranges. It also offers a 4-stop Image Stabilizer as well as a close focusing distance of just 0.35m throughout the zoom range.

Versatile super zoom lens

The EF-S 18-135mm f/3.5-5.6 IS is a powerful all-in-one lens for EOS EF-S mount bodies. It features a 4-stop Image Stabilizer and a 7.5x super zoom range (approx. 29-216mm equivalent focal length). The lens covers a wide range of focal lengths with a 0.45m minimum focusing distance. A general-

purpose zoom, it is ideal for photographers looking to make the step up from a standard kit lens.



Easy-to-use impressive image quality

Both lenses offer great low-light performance due to the inclusion of a 4-stop Image Stabilizer that automatically detects panning and tripods, responding accordingly to help photographers take steady shots in any situation. The addition of ultra low dispersion (UD) lenses and aspherical lens elements - as well as lens coatings optimised to combat ghosting and flare - ensure high quality throughout. Both products also include a circular aperture for beautiful background blur (bokeh).

Both lenses feature Canon's improved exterior lens design that offers an improved high-grade look and feel compared with previous EF-S lenses.

Offering a wide range of focal lengths both EF-S 18-135mm f/3.5-5.6 IS and the EF-S 15-85mm f/3.5-5.6 IS USM are ideal all purpose lenses, suitable for the photographer looking for a walk around lens or those with many lenses who on occasion wish to travel lighter.

NEW CANON L SERIES LENS

Canon also launched the high performance EF 100mm f/2.8L Macro IS USM, the latest addition to its prestigious L-series, Canon's flagship professional lens range. The EF 100mm f/2.8L Macro IS USM



incorporates image stabilisation in a macro lens for the first time in the EOS lens range. This enables photographers to capture stunning close-up shots without the need for a tripod.

The high quality, medium telephoto macro lens, has been developed for photographers who demand the highest level of optical quality. The new Hybrid IS system features up to 4-stop correction, compensating for the effects of camera shake, during normal shooting. Low friction ceramic balls support the moving elements, which allows for the amazingly smooth movement – needed when compensating for camera shake during macro shooting. Hybrid IS corrects shift movement – problematic when shooting up close -as well as angular movement providing photographers with the benefit of up to 2 stops at 1.0x magnification.

The EF 100mm f/2.8L Macro IS USM features ultra low dispersion (UD) lenses that correct colour aberration for high resolution, high contrast images while the addition of Super Spectra coatings effectively reduce ghosting and flare for superior quality images. A nine blade circular aperture makes subjects stand out amid beautiful background blur and a silent, high-speed ring type USM Autofocus motor quickly achieves focus. The lens also includes a three position focus limiter to tailor the focus system range to the desired subject.

As part of the L-series the lens features dust and water resistant seals. Sitting ahead of the EF 100mm f/2.8 USM Macro, within the range, the EF 100mm f/2.8L Macro IS USM supports a full range of accessories including: Tripod Mount D, Macro Lite adaptor 67, Lens Hood ET-73 and EF12 II and EF25 II extension tubes. The tripod mount attaches to the lens without the need for an adaptor enabling quick portrait or landscape switching without having to reframe the camera. Speedlites MR-14EX and MT-24EX can be attached using the MacroLite adaptor.

NEW SONY DSLR-A850



The new CSLR A850 from [Sony](#) offers serious photo enthusiasts a step up to the creative possibilities of full-frame imaging at a compelling price.

Ruggedly built for unflinching pro-style handling and performance, the A850 shares the same 24.6 megapixel sensor and virtually all features of the flagship DSLR-A900, introduced last year. Like its full-frame sibling, the A850 fully exploits the creative possibilities of the α family of lenses that includes premium full-frame optics from Carl Zeiss, plus five high-performance G Lens models.

At the heart of the A850 is a full frame 24.6 effective megapixel Exmor™ CMOS sensor that captures flawless, detail-packed images with vibrant, lifelike colours and fine textures.

The purity of high-resolution image data captured by the full-frame sensor is optimised by two-stage noise reduction in both analogue and digital domains. Noise reduction is first applied as the full-frame sensor converts light to electronic signals. Dual BIONZ™ image engines process large amounts of digital data, applying finely-tuned noise reduction during image processing to deliver pictures with extremely high level of sharpness and minimal noise level. This combination of high native sensor resolution and powerful noise control techniques ensures superlative image quality, even at high sensitivity settings up to a maximum ISO 6400 (with expanded ISO range).

The camera's optical glass pentaprism viewfinder aids accurate shot composition, offering an extremely bright view with minimal distortion and a generous 98% field coverage.

Serious enthusiasts will also prize the camera's fast, high-accuracy autofocus system that provides excellent framing freedom while making it easier to achieve optimum focus with moving subjects. The 9-point AF system is supplemented by 10 focus assist points to assist subject detection, improved out-of-focus detection to reduce focus hunting and a dedicated F2.8 sensor for enhanced AF accuracy with wide aperture lenses.

Shots can be viewed on the large, high contrast 3.0-inch Xtra Fine LCD that offers an exceptionally high resolution (921k dot) for critical evaluation – even outdoors or in bright ambient light.

For greater creative control, an Intelligent Preview function indicates the effects of exposure, white balance, and D-Range Optimiser adjustments prior to shooting. This Preview is invaluable when composing complex scenes that may typically combine multiple light sources with different colour temperatures.

Touching the Fn button switches the display to Quick Navi mode, allowing convenient one-handed adjustment of key shooting parameters. A secondary backlit LCD panel on the top of the camera body gives useful confirmation of major settings, even when the main LCD is turned off.

In common with all other DSLR cameras from Sony, the A850 features SteadyShot INSIDE™. This in-body optical stabilisation system delivers up to 4 steps of anti-shake correction with all compatible lenses, opening up even greater creative possibilities when shooting handheld.

Like its full-frame sibling, the A850 is ruggedly built for dependable performance in gruelling conditions with a high-tensile aluminium chassis and all-magnesium alloy body shell. Viewfinder, card slots, controls and other sensitive areas are protected from dust and moisture by rubber seals. In addition, a dual anti-dust system guards the full-frame sensor from the effects of dust entering the body during lens exchange.

The supplied high-capacity InfoLITHIUM™ Battery Pack (NP-FM500H) delivers power for up to 880 shots (approx.) per charge. Battery levels can be monitored in precise 1% increments, cutting uncertainty about remaining shooting time.

The camera can be connected to your BRAVIA™ or any HD TV (requires optional HDMI cable) for a big-screen view of your shots. On-screen image quality is optimised for superbly lifelike reproduction on BRAVIA™ models supporting PhotoTV HD. On-screen playback can be controlled via an optional remote commander.

The choice of full-frame lenses to complement the A850 is enhanced with the new 28-75mm F2.8 SAM. This compact, easy-to-carry lens is ideal for photo enthusiasts looking to add a bright, general purpose zoom to their collection of full-frame optics. Delivering excellent imaging quality at an accessible price, it's the first zoom for the Alpha range offering a wide F2.8 aperture over its entire zoom range. Ideal for day-to-day shooting tasks, its bright maximum aperture makes the 28-75mm F2.8 SAM particularly valuable for interior scenes and available-light portraits.

The DSLR-A850 full-frame digital SLR camera is available from September 2009 and the 28-75mm lens will be available from November 2009.

Features

- Full-frame 24.6 effective megapixel Exmor™ CMOS sensor and dual BIONZ processors for detail-packed, low-noise images with high sensitivity up to ISO 6400 (with expanded ISO range)
- Bright optical glass pentaprism viewfinder with 98% coverage
- SteadyShot INSIDE™ offers up to 4.0 steps anti-shake performance with all lenses
- Photo quality (921k dot) 3.0-inch Xtra Fine LCD
- Fast, high-accuracy 9-point AF with 10 focus assist points

wo powerful, feature-packed DSLR cameras from [Sony](#) make it easier than ever to capture beautiful pictures, carefree family portraits, stunning holiday memories and action-packed scenes.

SONY DSLR-A500 (12.3 MEGAPIXELS)
AND DSLR-A550 (14.2 MEGAPIXELS)



The DSLR-A500 (12.3 megapixels) and DSLR-A550 (14.2 megapixels) are packed with advanced Sony technology that combine the spontaneity and freedom of Live View shooting with generous possibilities to realise your creative vision.

At the heart of both cameras is a new Exmor™ CMOS sensor that ensures crisp low-noise images, packed with fine detail and vibrant colours. Sharing powerful on-chip noise reduction techniques with the full-frame DSLR-A900, this advanced sensor works with processing algorithms handled by the high-speed BIONZ™ engine to deliver premium images plus razor-sharp shooting responses. Dramatically reduced picture noise now allows super-sensitive shooting at up to ISO12800, allowing attractive results when shooting handheld in challenging situations like candlelit interiors.

Thanks to the powerful BIONZ image processing engine, Quick AF Live View now supports even speedier shooting responses with rapid, precise autofocus. This makes it easier than ever to capture beautifully relaxed portraits, dynamic action shots and more.

Powered by the BIONZ image processing engine, fast-moving action can now be captured effortlessly with faster continuous shooting speeds. Sustained shooting speeds of up to 4 fps can be achieved in Live View Mode, rising to 5 fps with the optical viewfinder. New Speed Priority mode on the DSLR-A550 raises the bar further still, shooting at an incredible 7 fps (with AF and AE setting maintained from the first frame). It's a powerful creative tool for capturing the nuances of a portrait subject's changing expression or dynamic action sequences.

In a DSLR debut, Quick AF Live View now features Face Detection, prioritising AF on people's faces and fine-tuning exposure/white balance settings for crisp, beautiful portraits with natural skin tones. Another DSLR first by Sony that's already featured on many Cyber-shot™ models, Smile Shutter detects faces in Live View mode, automatically firing the shutter at just the right moment to capture happy, relaxed smiles.

A special new Manual Focus Check Live View mode assists with fine-tuning your composition. Low-noise images can be previewed directly from the CMOS sensor, allowing critical assessment of focus and fine detail, even in low light. The live image offers 100% field coverage, assisted by framing grid lines for precise composition. There's also a selectable 7x/14x zoom function for a close-up confirmation of focus.

The A500 offers a crisp, high-contrast 3-inch Clear Photo LCD Plus screen with the same tilt range for clear, comfortable composition and reviewing shots.

The A550 features a superb (921k dot) 3-inch Xtra Fine LCD screen for critical focusing and photo-quality viewing with class-leading colour, contrast and detailing. The screen tilts up or down over a full 180 degree range, allowing uncompromised 'free-angle' live view shooting in any position. An ambient light sensor automatically boosts LCD brightness for extra screen clarity when surrounding light levels are high while both cameras also feature a clear, bright optical viewfinder with wide 95% field coverage for framing and focusing as an alternative to live view shooting.

Operation of both cameras is brilliantly simple, thanks to a redesigned on-screen interface that provides easy access to functions and settings during live view operation. A unique Graphic Display gives a clear, intuitive indication of how shutter speed and aperture adjustments will affect the final image.

Creative options are broadened by new Auto HDR mode that captures a huge range of shadow and highlight detail in landscapes, interiors and other scenes. Previously accessible only to enthusiasts equipped with a tripod and image processing software, HDR (High Dynamic Range) is a specialist technique that combines two frames shot at different exposure settings. The A500 and A550 use powerful algorithms to combine and optimise two successive frames in less than 10 seconds, correcting any misalignment between frames when shooting handheld. The result is a single HDR image emulating the huge natural tonal range of human vision – with no PC or tripod needed.

The D-Range Optimiser featured in previous DSLR models has been enhanced for even better results with backlit portraits and other tricky high-contrast scenes. The powerful BIONZ engine now optimises

image data in real time, processing brightness and contrast in individual areas of each exposure for balanced, natural looking results. Optimisation can also be selected manually from 5 processing levels. A Smart Teleconverter button instantly boosts image size by 1.4x or 2x to extend your camera's zoom lens range further for frame-filling close-ups.

Like all DSLR cameras by Sony, both new models feature SteadyShot™ INSIDE, the powerful optical image stabiliser that cuts the effects of camera shake by up to 4 stops while shooting handheld with any lens.

After shooting, it's easy to connect both cameras to your BRAVIA™ television via HDMI (requires optional cable) for a stunning big-screen view of your shots. Compatible BRAVIA™ models automatically switch to PhotoTV HD mode for optimised still image playback with incredible detail, colour and clarity. BRAVIA Sync lets you control image slideshows in comfort via your TV's remote.

Both cameras let you capture even more incredible moments without the worry of running out of power. The rechargeable battery pack of the A500 allows up to 1000 shots (CIPA test, approx. figure) – the highest capacity of any α series digital SLR camera battery to date. The battery of the A550 delivers up to 950 shots from a single charge.

If you're hungry for even more shooting stamina, the new VG-B50AM Vertical Control Grip holds up to two NP-FM500H batteries. This premium grip gives A500 users an incredible 2,000 shot maximum capacity (A550: 1,900 shots), with automatic switchover between batteries and accurate display of power remaining in % increments on the camera's LCD. An additional shutter release and dual controls support comfortable, accurate shooting in either portrait or landscape positions.

Also, with Memory Stick™ at the heart of the Sony alpha, you have every advantage. The advanced Memory Stick PRO-HG Duo HX (4GB, 8GB, 16GB or 32GB) is the perfect tool for continuous shooting mode, with the ideal combination of massive storage capacity and blisteringly fast operation. Memory

Stick PRO-HG Duo HX 32GB will never miss the key shot because the number of pictures taken in 1 min is approx 270* photos (in RAW+JPEG/L (12M)). Delivered with USB Adaptor, Memory Stick PRO-HG Duo HX 32GB is ideal for users who want to transfer data in high speed: approx. 1700* pictures in L (12M) size at RAW+JPEG mode in 26 minutes.

The DSLR-A550 and DSLR-A500 digital SLR cameras are available from the end of October 2009.

*these figures are measured under certain conditions

Features

- New 12.3/14.2 effective megapixel (A500/A550) CMOS sensor and new enhanced BIONZ processor for detail-packed, low-noise images with high sensitivity up to ISO 12800
- High-speed continuous shooting up to 5fps (with optical viewfinder) and 7fps in Speed Priority mode (A550 only)
- Enhanced Quick AF Live View captures fast-moving action, with Face Detection for beautiful portraits
- 180° tilt-angle 3" Xtra Fine LCD (A550) and intuitive new interface for clear, simple shooting
- Manual Focus Check Live View mode for precise, convenient adjustment of focus and composition
- Auto HDR mode for high dynamic range exposures
- Class-leading shooting stamina (1,000 shots - A500)
- HDMI™ output and BRAVIA™ Sync for control from TV remote

WHAT'S ON – EXHIBITIONS & EVENTS

EXHIBITIONS

NATIONAL YOUTH SELF PORTRAIT PRIZE 2009

A selection of entries, including the prize-winning work, will be displayed at the National Portrait Gallery and as an online exhibition from 23 July–13 September 2009.

HUW DAVIES GALLERY

POSTCARDS FROM THE TERRITORY

12 September–19 September
PhotoAccess Multimedia Gallery

ANU Rural Medical Society. Postcards from the Territory showcases the experiences and work of medical students while on placements in remote communities in the Northern Territory.

The exhibition offers a rare glimpse into the life, culture and landscape of Indigenous Australians living in the Northern Territory.

HIY2009 - HANG IT YOURSELF

Everyone will have a chance to show their work during the PhotoAccess 25th Anniversary celebrations, when the HUW DAVIES GALLERY will be the venue for the ultimate open access exhibition. A photomedia take on street art, HIY (Hang it Yourself) 2009 will show in the HUW DAVIES GALLERY from 1 to 20 September 2009.

HUW DAVIES GALLERY
Manuka Arts Centre
Corner Manuka Circle and New South Wales Crescent, Griffith (next door to the Manuka Pool)
PO Box 4059 Manuka ACT 2603
Phone:(02) 6295 7810

Opening hours:

10 am to 4 pm Tuesday to Friday
12 to 4 pm Weekends

We will also have extended opening hours each week in the evening and weekend. Please call to find out what extra time we will be open

Email: contact.us@photoaccess.org.au

UPCOMING EVENTS

CANBERRA NARA CANDLE FESTIVAL



Join in the celebration of Canberra's sister city relationship with Nara, Japan. Fun and interesting activities for children include origami, calligraphy, didgeridoo and boomerang painting. You can even make your own Japanese lantern, then participate in a spectacular lantern procession in the evening. A variety of Japanese cuisine and beautiful designer Japanese handicrafts will be for sale. At dusk the scene is set for the event's centrepiece - more than 2000 floating candles arranged in the dry riverbed of Canberra Nara Park. As the sun sets, the candles flicker into the evening sky and illuminate the park with a soft glow.

Where: Canberra Nara Park, Lennox Gardens, Yarralumla
No admission charge.

When: 26-09-2009-09-

Enquiries: events@act.gov.au

Ph: 13 2281

URL: www.events.act.gov.au

2009 WORLD MOUNTAIN BIKE AND TRIALS CHAMPIONSHIPS

Where: Stromlo forest Park

When: 01/09/2009 - 06/09/2009, -

FLORIADE 2009

Saturday 12 September to Sunday 11 October

PHOTOGRAPHIC WORKSHOPS

Morning workshop times

7.00-9.30am (followed by breakfast at Cafe Valenti)

- Saturday 12 September
- Saturday 19 September
- Saturday 3 October
- Saturday 10 October

Twilight workshop times 4.30-7.00pm (followed by refreshments at ActewAGL Look and Learn Marquee)

- Wednesday 30 September
- Thursday 1 October
- Thursday 8 October

Workshop format

Workshops will be run by Geoff Comfort and Ben Kopilow, both members of the Australian Institute of Professional Photography and experienced photographic lecturers. Geoff and Ben will both attend each session. The sessions are stand alone and not part of a series. Short course notes will be supplied to participants. The sessions will include two hours of hands-on workshop and a 30-minute debrief and photo critique.

To get the most value from the workshops it is recommended that participants bring a camera that has a manual override.

Workshop numbers

Numbers will be limited to a maximum of 12 participants so book early to avoid disappointment. Workshops will also require a minimum number of eight participants to run.

Workshop cost \$154 per person (GST inclusive).

Price includes:

- 2.5 hour photography workshop by Geoff Comfort and Ben Kopilow
- Breakfast for the morning sessions and refreshments for the evening sessions
- A Floriade bag containing a Floriade cap and mug.

How to book

Workshops are limited and bookings are essential.

Please download the booking form.

Complete the form and address it ATTENTION TO THE FLORIADE PHOTOGRAPHIC WORKSHOP COORDINATOR.

Return the form by one of the following ways:

Email susie.dunn@act.gov.au

Fax 02 6205 0629

Post Australian Capital Tourism Locked Bag 2001 Civic Square Canberra ACT 2608

[Terms and Conditions, Booking and payment form \(PDF\)](#)

F22: Southside Camera Club Newsletter September 2009

Experience and be inspired by a rich harvest of workshops and presentations to inspire throughout Floriade.

COMPETITIONS

CANON EOS PHOTO 5

An annual creative photography competition which all begins with a brown paper box. Inside there will be items which represent 5 separate photographic briefs to challenge photographers.

This year we have 5 professional judges and even bigger prizes - [find out more here](#).

POSTCARDS FROM YOUR TOWN

Each year ActewAGL and TransACT produce an annual calendar distributed free to schools, community groups and businesses throughout the capital region.

For our 2010 calendar we are looking for the 12 best photos, from photographers young and old, that best depict life in the towns of our region.

The winning photos will feature on the 2010 ActewAGL and TransACT calendar, with each winning photographer pocketing \$500.

Webpage: <http://www.actewagl.com/promotions/Postcards/default.aspx>

HOW TO ENTER

To enter, submit a landscape (horizontal) format image that represents your community. It can be of anything – people, teams, landmarks or monuments.

Along with your image, please supply your:

- name
- postal address
- email address
- phone number
- description of the image in 10 words or less.

ELECTRONIC ENTRIES

Images should be no bigger than 4MB and can be emailed, along with entry details, to postcards@actewagl.com.au

POSTAL ENTRIES

Images submitted by post should be a high-quality laser print or supplied on a CD no bigger than 4MB. Images and entry details can be posted to:

Postcards From Your Town
ActewAGL and TransACT
Marketing and Corporate Affairs
PO Box 250
Civic Square 2680

Entries close at 5pm on Friday 18 September 2009.

[Competition terms and conditions apply](#)

Position	Person	e-mail address	Phone (ah):
President	Rod Burgess	rodnkym@actewagl.net.au	6292 6698
Sec/Treasurer	Kim Barnabas	gerkims@tpg.com.au	
Newsletter Editor	Warren Hicks	hicks@netspeed.com.au	6288 3689

SOUTHSIDE CAMERA CLUB - PHOTOSHOP SIG MEETING TOPICS 2009

September 24	TBA		
October 22	TBA		