

# F22: Southside Camera Club Newsletter February 2009



## February Club Meeting - 7:30pm Thursday 12<sup>th</sup> at the Canberra Irish Club, 6 Parkinson Street, Weston

### 2009 Program

#### PRESENTATIONS

Month	Presentation & Coordinator
Feb	Street/Candid photography (Claude Morson)
March	Night Photography (Bob Shobbrook, Norm Fisher)
April	Bird Photography (Rod Burgess/Bob Shobbrook)
May	Advanced Photoshop (Photoshop Special Interest Group - Shane Baker coordinating)
June	Colour inkjet printing/monitor calibration (Warren Hicks/Rod Burgess)
July	
August	
September	Landscape Photography (Robert Deane)

#### EXCURSIONS

Month	Excursion & Coordinator
Feb	Multicultural Festival
March	Canberra Balloon Fiesta (7, 8 or 15 March)
April	Blundell's Cottage
May	Night Photography (9 May late afternoon) Railway Museum
July	Table top/Close up Photography
Aug	tba
Sept	Coast overnight (Giles West)
Oct	Botanic Gardens, (possibly overnight to Laurel Hill near Batlow as well)
Nov	Outdoors location - Wadbilliga, London Bridge, Legoland, Tidbinbilla ...

*Reminder: Maintaining Irish Club Membership is now the responsibility of members as regulation changes mean membership can no longer be paid on your behalf by the club.*

## Industry News

### [Panasonic Lumix DMC-G1 review on dpreview](#)



Last week dpreview posted our long awaited review of the category defining [Panasonic Lumix DMC-G1](#). This is the first Micro Four Thirds camera, an interchangeable lens system which does away with the legacy of a moving mirror allowing the rear of the lens to get closer to the sensor. This means lenses which are smaller and lighter, bodies which are thinner and lighter and mechanically a lot simpler than a traditional SLR. The disadvantages are that you can only provide a viewfinder view electronically (using an Electronic Viewfinder) and auto-focus is limited to contrast-detect only. So how does the G1 measure up? Does it dawn a new age for interchangeable digital cameras is it just a proof of concept? Dive into [dpreview's detailed review to find out](#).

### FIRMWARE UPDATES

#### [Canon and Nikon update firmware](#)

have released firmware updates for the 40D, D3 and D700 DSLRs. All three updates correct rare errors and make minor changes to camera behaviour. The 40D is updated to firmware v1.1.1. The Nikon D3 moves to v2.01 and the D700 to V1.01. Full details of all the issues resolved are made on the relevant company's websites.

#### [EOS40D update](#)

#### [D700 update](#)

#### [D3 update](#)

#### [Panasonic updates firmware for DMC-LX3](#)

Panasonic has released a firmware update for the Lumix DMC-LX3 digital compact camera. With version 1.2, the EXIF data is correctly displayed on

all JPEG files. It also improves the white balance in flash mode when connected to the DMW-FL220 flash unit. Furthermore, the shutter speed is now correctly set while the image stabilization is turned on in the Intelligent Auto and Scene mode. [\(more\)](#)

### SOFTWARE UPDATES

#### [Adobe offers Lightroom and ACR 'release candidates'](#)

Adobe has released 'Release Candidates' of Photoshop Lightroom 2.3 and Camera Raw 5.3 for immediate download from Adobe Labs. Both provide additional Raw support for the Nikon D3X and Olympus E-30 DSLRs. Lightroom is also now available in 8 new languages. The 'release candidate' label means the downloads are 'well tested' but not yet final versions. [\(more\)](#)

#### [Sigma launches 18-250mm DC OS HSM lens](#)

Sigma has announced the 18-250mm F3.5-6.3 DC OS HSM superzoom lens. Offering a 13.9x zoom range in a body only slightly longer than the company's current 18-200mm F3.5-6.3 OS lens, this new model features an optical design of 18 elements in 14 groups, including four Special Low Dispersion elements and three aspherical elements to minimise aberrations. Designed for use on cameras with APS-C / DX sensors, the lens is expected to be available from March, for Sigma, Nikon, Canon, Pentax and Sony mounts. [\(more\)](#)

#### [Canon unveils PowerShot A480](#)

Canon has introduced the PowerShot A480 digital compact camera, replacing PowerShot A470 with a more compact body and easier operation. Twenty five percent smaller than its predecessor, the A480 includes a new simplified button layout for ease of use. This entry-level compact houses a 10MP sensor, 2.5" LCD, Canon's DIGIC III processor and includes features such as Motion detection and Face Detection. [\(more\)](#)

#### [Panasonic announces DMC-LS85 compact camera](#)

Lastly, Panasonic has released the DMC-LS85 digital compact camera, a successor to DMC-LS80. Similar to the LS80, it is bundled with an 8.1 MP sensor and 2.5 inch LCD with 230,000 dot

## F22: Southside Camera Club Newsletter February 2009

resolution. The optical zoom has been increased to 4x (33-132mm equiv) and the image processor has been upgraded to Panasonic Venus Engine IV. The camera also includes features such as MEGA O.I.S, Intelligent ISO Control, Face Detection and Intelligent Scene Selector. ([more](#))

### [Panasonic launches DMC-FS7 & DMC- FS6](#)

Panasonic has launched the DMC FS7 and FS6, a pair of budget-level digital compact cameras. Both feature 4x zoom lenses, starting at the slightly wide-angle 33mm equivalent. Both the 10.1 megapixel FS7 and the 8.1 megapixel FS6 feature Panasonic's Mega O.I.S image stabilization system and the

latest, fourth generation of the company's Venus Engine image processor. ([more](#))

### [Panasonic introduces DMC-FS15 ultra compact](#)

Panasonic has introduced the DMC-FS15 ultra compact digital camera. This 12.1 megapixel camera with a 2.7 inch LCD incorporates a Leica DC Vario-Elmar lens with 5x zoom starting at 29mm equiv. It includes features such as AF tracking, Intelligent Exposure, Face Detection, Intelligent Scene Selector, Mega O.I.S. (optical image stabilizer) and Intelligent ISO Control. ([more](#))

## What's On – Exhibitions & Events

### Exhibitions

BRUTAL, TENDER, HUMAN, ANIMAL:  
ROGER BALLEEN PHOTOGRAPHY



Roger Ballen (b.1950), Twirling Wires, 2001.

Disquieting and confronting, the works of internationally renowned artist Roger Ballen are some of the most challenging in contemporary photography. This exhibition provides a powerful and thought-provoking vision of the human condition, exploring poverty, the psychology of human beings and the theatrical possibilities of photography.

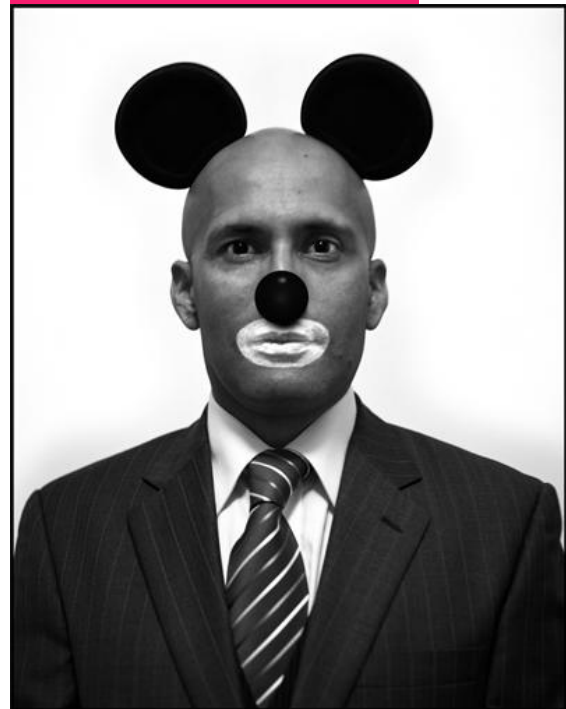
**When:** 26 Nov 08 - 29 Mar 09

**Where:** National Library of Australia

**Cost:** Free

**Contact:** Info: 02 6262 1111

Booking: 02 6262 1111





### MAinspace - MAURICE ORTEGA

Maurice was born in Mexico City in 1964, he holds a Master of Visual Arts from Griffith University and is currently the Director of the Queensland Centre for Photography. Maurice established his career in Sydney as a staff photographer for the Australian Museum and since 2000 he has been an invited lecturer at Griffith University in the areas of Art Theory, Art History and Photography.

An aficionado of early Disney culture Maurice Ortega presents a very different view of the Mickey Mouse we have become familiar with over the last 80 years. Ortega's Mickey was initially black and something of a swaggering sex god who has been tamed over the years for increasingly puritanical public consumption. In his new work we find the iconic mouse at the centre of a developing narrative that reflects the episodic nature of comic books and the Saturday matinee. In terms of structure and the sequencing of frames Ortega cites comic strip innovators such as Guido Crepax and quotes Marvel's Moebius for the construction an existential heroic vision that is removed from political propaganda. Continuing his focus on the "hero's journey" in classical mythology Ortega presents Mickey Mouse as a hero in reverse providing an interesting parallel to the "cultural change" experienced by the Disney original - from a spirited somewhat alien hero to thoroughly sanitized mouse.



### Izabela Pluta *Untitled* 2008

### MIDDLESPACE - IZABELA PLUTA

Izabela Pluta was born in Warsaw, Poland, and migrated to Australia in 1987. She is currently based in Sydney and lectures in Photography at The National Art School, Sydney and College of Fine Arts, UNSW. She is a Master of Fine Arts candidate at The College of Fine Arts, UNSW.

Izabela is drawn to landscape, both the natural and built environment, through everyday experience. Her work is deliberately and directly influenced by her immediate surroundings and through this experience of place the work investigates the relationship of public and private spaces, to cultural identity, memory and recollection. Izabela's recent research has looked into notions of place and non-place, familiar and foreign; highlighting the duality of experience between two places and two different stories by exploring transient cultures and the intermediate zone of old homeland and new home.

To Izabela cultures seem ever more transient, moving back and forward between places she knows and doesn't know. As a first generation migrant she is interested in investigating this state of flux.

**When:** 7 February - 14 March

Opening times: Tues-Fri 11am-5pm Sat 10am-4pm

**Where:** CCAS Gorman House

## F22: Southside Camera Club Newsletter February 2009

### RE-PICTURE AUSTRALIA FLICKR GROUP

In conjunction with the National Library of Australia, CCAS is planning an online exhibition of selected works from the Re-Picture Australia Flickr group in 2009. If you want to be involved in the exhibition, keep submitting work to the Re-Picture Australia group. Selected works will be announced later in 2009. Other cultural agencies across the country will also be invited to collaborate by screening works from Re-Picture Australia in their venues. NLA will be loading more public domain images from our contributors, to the Re-Picture Australia project, in the New Year. Sample below...  
[www.pictureaustralia.org/contest/index.html](http://www.pictureaustralia.org/contest/index.html)



*Hoisting the top onto the Big Pineapple at the official opening of the Sunshine Plantation by the Hon. John Herbert, Minister for Labour and Tourism, August, 1971.*  
Creator Unknown

### Upcoming Events

#### [Australian Blues Music Festival - The National Festival of Australian Blues Music](#)

It is The National Festival of Australian Blues Music and showcases the very best of emerging and established Aussie blues talent. The line-up includes acoustic and electric acts with a range of styles from the roots of blues music to the music that has been influenced by blues.

Features include: Australian Blues Music Awards, open mic/jam throughout the weekend, Youth in

Blues Jam, Pro-Jam, vintage guitar and amp shop, workshops with the artists, buskers & markets.

12 Feb 09 - 15 Feb 09

**Where:** Various venues around Goulburn

**Cost:** 3-Day Pass, single day, youth and single venue passes available.

**Contact:** The Festival Office is located in the Goulburn Visitor Information Centre 201 Sloane Street (Locked Bag 22), Goulburn NSW 2580

Free call: **1800 353 646**

E: [info@australianbluesfestival.com.au](mailto:info@australianbluesfestival.com.au)

### A Celebration of Heritage & Roses Festival

Goulburn's annual Celebration of Heritage & Roses Festival

This is a cooperatively organised, community-run festival incorporates Cathedral Week and is proudly supported by Goulburn Mulwaree Council.

This Festival is held in March each year to coincide with the City of Goulburn Annual Rose Show and Goulburn's birthday on the 14 March.

Royal Letters Patent issued by Queen Victoria on 14 March 1863 established the Diocese of Goulburn giving Goulburn city status and making it the first inland city.

The existing St Saviour's Church became the Cathedral. The festival also incorporates 'Cathedral Week' activities.

The many Festival activities will transport you back to the early 1900s and bring history to life.

Featured events include: special openings, tours, presentations & live performances including St Saviour's Cathedral Week (7-15 March) and City of Goulburn Rose Show (7 & 8 March).

Autumn is a perfect time to enjoy the city in full bloom. The heritage of the Goulburn district reaches into the future and is alive and growing.

Come - be a part of it!

Additional events will be added to this page as they are confirmed.

**When:** 7 Mar 09 - 15 Mar 09

**Where:** Various venues around Goulburn NSW

**Contact:** To join the Celebration of Heritage & Roses Festival mailing list and/or receive a free copy of the full printed program please contact the Goulburn Visitor Information Centre. 201 Sloane Street, Goulburn NSW 2580

# F22: Southside Camera Club Newsletter February 2009

## 2009 National Autumn Balloon Spectacular



**Where:** Lawns in front of Old Parliament House, King George Terrace, Parkes, Canberra, Australian Capital Territory, 2600. Get yourself down to the lawns of Old Parliament House for the 2009 National Autumn Balloon Spectacular. Enjoy the sight of bright, multi-coloured balloons as they take flight over Lake Burley Griffin. There will be plenty of music and entertainment for everyone and breakfast will also be available. Weather permitting, the balloons will fly every day so make sure you check out the action during this nine day Spectacular. Be sure to bring your camera and capture a truly uplifting event!

**When:** Date: 07–15 March

Telephone Enquiries: 02 6285 1540

[www.events.act.gov.au](http://www.events.act.gov.au)

Be there before the sun comes up for the best views!



## 2009 Rally of Canberra 7 and 8 March 2009

Spectator instructions and maps will be available closer to the Rally at <http://www.roc.com.au>

Position	Person	e-mail address	Phone (ah):
President	Rod Burgess	<a href="mailto:rodkym@actewagl.net.au">rodkym@actewagl.net.au</a>	6292 6698
Sec/Treasurer	Kim Barnabas	<a href="mailto:gerkims@tpg.com.au">gerkims@tpg.com.au</a>	
Newsletter Editor	Warren Hicks	<a href="mailto:hicks@netspeed.com.au">hicks@netspeed.com.au</a>	6288 3689