

# F22: Southside Camera Club newsletter



Volume 29 – Issue 5: June 2021

## Contents

What's on this month	1
Reports	2
President's report	2
National Arboretum walkabout	2
Googong Foreshore outing	2
Astrophotography interest group	2
May Portrait Interest Group	3
May Dig-Sig	3
Future events and meetings	3
10 June: Lighting Workshop	3
Friday–Sunday 18–20 June: Narooma	4
22 June Dig-Sig meeting	4
24 June: Walk-in bird aviary	5
Calendar of future events	5
Is it time to ditch your DSLR?	6
Online resources	6
From Paul Livingston	6
Competitions	6
Birdlife photography awards	6
The Club online	6
Web site	6
Facebook	6
flickr	6
Gear for sale or giveaway	7
Equipment list	7
Office bearers	7
F22 gallery	8

## Meetings

7:30 pm: Woden Senior Citizens Club, 12 Corinna Street, Phillip

Second Thursday of the month for general meetings;  
fourth Tuesday for DIG SIG (Deakin Soccer Club, 3 Grose Street, Deakin)

### **Next meeting Thursday 10 June: Lighting workshop – presenters Rob Wignell and Mark Stevenson**

*While the presentation will primarily concern itself with the set up and use of the Club's Elinchrom studio lighting kit, it will also (if time allows) touch on some basic elements and considerations around the use of both on and off camera lighting. Following a demonstration of the set up of the lighting kit, members will be free to make use of the kit, so those attending are asked to consider bringing along their cameras to trial the equipment. Any camera with a hot-shoe will be able to utilise the lighting equipment as the system is not brand specific. One of the main purposes of the presentation is to encourage members to make use of this under-utilised Club resource.*



## What's on this month

Date	Meeting, excursion, walkabout or group event	Speaker/convenor
Thurs 10 June	Meeting: lighting workshop –hands-on	Mark Stevenson/Rob Wignell
W/end 18–20 June	Coast – Narooma	Rhonda Daniell
Tues 22 June	DIGSIG	Norman Blom
Thurs 24 June	Bird aviary	Helen Dawes
Sat 26 June	Portrait Interest Group	Mark Stevenson

## Reports

### President's report

It is winter and doesn't it feel like it with those crisp morning and clear winter skies. The light at this time of year is incredible and there is not bad time of day to photograph with the sun lovely and low in the sky. A good time of year to dust off the camera and go out and try for some photos. I noticed the banksias in Tidbinbilla are all flowering at the moment and are full of honey-eaters so a good time to try for that elusive bird photo. The Astro Photography group has been very active and I've seen some wonderful photos from them on our Facebook page. Well worth hopping on to have a look. If you haven't joined our Facebook page yet I recommend joining. It is a closed group so only financial members of the Club can join (and I do check and remove non-financial members) and see the photos up there so it is a nice safe environment if you haven't tried Facebook. The link to join can be found on the SSCC website at: <http://www.southsidecameraclub.org/image-gallery/members-on-line/>

At this month's meeting Rob Wignell and Mark Stevenson will be presenting on lighting for portrait photography and it will include a practical session. The Club has its own lighting kit that members can borrow and this will be available for members to have a play. So please bring along your cameras and have a go in a very supportive environment.

Julie Taylor  
President

### National Arboretum walkabout report

Mike organised our outing today, with the hope of getting some interesting Arboretum photos for the 2022 Arboretum calendar and the next copy of the Arboretum book, to be sold to visitors. Ten of us took up the challenge.

The weather the day before was wet and miserable, so I was dubious whether any of us would be going. However, Mike did a fabulous job of organising the weather for us. Blue sky appeared early, and by 9.00 am it was a lovely day – a bit of wind, but no bother in the lee of the hill where he took us. The sun shone all morning, lifting the beautiful autumn colours.

We started off from the small car park beside the Silver Birch plantation, which looked great with the thinning yellow leaves atop the white trunks, planted comfortably in curving lines. In the mulch beneath these trees we found a number of those lovely (to look at) red and white mushrooms, the Fly Agaric fungus.

We moved south through a couple of unimpressive, as far as colour was concerned, plots, to the *Liquidamber orientalis* (also known as Oriental Sweet Gum) plot, which lived up to the liquid amber reputation for colour, ranging from still green, through yellow/green, yellow, light and dark orange and into reds.

We walked through the bottle trees and Kurrajongs, which are closely related. There are 3 bottle trees, which we are told were brought in as fairly mature trees and transplanted. They have the lovely rounded 'bottle' trunk.

Then we fitted in the Callery Pear plantation, which was very colourful ranging from green to red tones. The trees were redder on the lower section of hill, presumably as it would have been colder on the lower slopes to turn the colour.

Then still in the sun, we went into the café for refreshments. A very nice morning, thank you Mike.

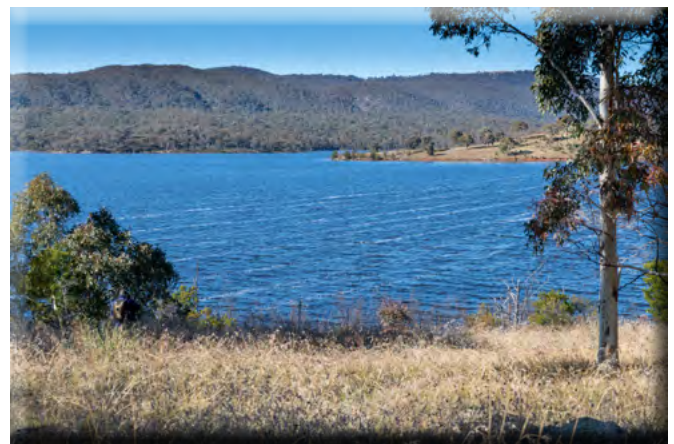
Bev Bayley

### Googong Foreshore outing report

A small band of Club members assembled near the Googong Foreshore boat ramp car park on a crisp Sunday morning last month. Googong is now as full as it can get, so compared with our visit there last year there is a huge amount of extra water. A surprisingly strong breeze created some wind lane froth on the lake.



The path along the foreshore is now very close to the water, which seemed good for some camera angles.



A 90 minute walk along the lake shore was enough to generate a taste for coffee and biscuits and deep discussions of topics covering cameras and covid.

Rob Wignell

### Astrophotography interest group outing report

We had a very successful trip to Breadalbane, just SW of Goulburn on 15 May. It was very cold but I think everyone who attended got something for their trouble. We started off with a group shoot of the church for the Milky Way, first of all taking a series of shots for the foreground, then we changed the camera settings without moving the cameras and took a series of exposures for the sky. That took around 45 minutes. After that, we then pointed the cameras towards the south and took a series of light painted frames for the star trails foreground.

We then set the intervalmeters up to shoot a series of 2–3 minute exposures at ISO 500–640 @ f5.6. This type of photography is the most boring of all, you need at least 2–3 hours of continuous frames to complete the star trails for the sky. We ended up sitting in vehicles to try and stay warm. One thing this event highlighted was that you really need to layer up. Some cameras didn't finish the 2 hour shoot, probably due to battery conditions and the lack of lens warmers.



I was lucky, my camera was only hours old and the battery still had around 40% capacity at the end. My lens warmer stayed on but I hadn't set it up correctly, I was lucky to get away with it though. I'm hoping to do a Zoom presentation on Wednesday night prior to the monthly general meeting.

All Club members will be invited as I've asked Julie to include two Zoom links into her monthly email notice. The presentation will consist of the post production of the images that I took at that event. I'll be recording it and replaying it back to save time as my computer hasn't got the processing power for large R5 files.

I'll be down sizing the images prior, so the presentation doesn't become boring. As far as this month's events go, we are planning a shoot for the Milky way out at Captains Flat, probably at the old mine site. The terrain is steep, so care will have to be taken if anyone wants to walk up to the top of the hill, that's where the best location will be. We'll probably meet at the Queanbeyan Maccas so we can car share. We did this in April and it was successful.

John Mitchell  
Convenor

### May Portrait Interest Group report

The May Portrait Interest Group meeting was held on Saturday, 29 May at Glebe Park in Civic. Our group met at 9.30 at the north end of the park on a beautiful, clear but somewhat chilly morning. Three photographers and one model made it to the shoot. Sadly, there were a number of photographers and models unable to attend this month including one of our regular models who sustained a badly sprained ankle just the previous day.

Glebe Park itself was in lovely condition with lush grass and many of the trees still holding on to the last of their by now very golden leaves. The leaves, whether still on the trees or carpeting the ground, made for some very picturesque backgrounds to work with. Other sites we used on the day included a copse of elm trees, some piles of leaves, a timber walkway, the children's playground and some balance logs.



At the end of the shoot (about 11.15) we retired to the Gather Park coffee shop on Bunda Street right opposite Glebe Park; so only a very short walk for sustenance. Over our usual coffee and eclectic chats, this time about photography, architecture and travel, it was decided that Old Parliament House would be a our venue for the June meeting, which is scheduled for Saturday, 26 June.

Mark Stevenson  
Portrait Interest Group Convenor

### May Dig-Sig report

The May dig-sig meeting was attended by a small group of keen photographers. The activity was critiquing photographs and members were asked to bring along several photos they wanted feedback targeted to specific aims they were trying to achieve.

To begin with several Do's and Don'ts regarding giving and receiving feedback/critique were discussed.

Several panoramic landscape photos, portrait photos, travel photos and macro photos of flowers were shown and critiqued. The most common feedback was concerned with cropping, either the photo had been cropped too tightly or not sufficiently.

Members were asked to recall any photos that are etched in their memory and to think why these photos have such lasting impact. A large number of memorable photos mentioned were ones that capture disturbing war scenes such as the photo of the execution of a Viet Cong prisoner that changed the course of the Vietnam war taken by Associated Press photographer Eddie Adams. Others included Migrant Mother taken by Dorothea Lange, the Afghan Girl on the cover of National Geographic taken by Steve McCurry and Ansel Adam's photographs of Yosemite.

Norman Blom  
Dig-Sig Convenor

### Future events and meetings

#### Thursday 10 June 2021: Lighting Workshop

The Club owns a set of Elinchrom Studio Flash equipment. This is professional level equipment that lets us make professional level images. It is available free to all Club members and this session is aimed at encouraging more of us to use it.

Mark and I will demonstrate how to assemble the equipment and set it up for using with a camera. Secondly, we will demonstrate a basic portrait setup. Thirdly we will get a few Club members to use the flash with their cameras. Finally, we will show how the kit needs to be packed up ready to take away.

The Elinchrom setup has two flashes with considerable, but adjustable, power, and two sender units that enable a camera to activate one (or both) of the flash units. We also have a flash meter that can accurately measure exposure to 1/10th of a stop, although, both Mark and I tend to use trial and error because it is easy and, these days, there is no film cost involved. The Elinchrom flash units can have their power output adjusted in 1/10th stop increments.

Mark Stevenson is the custodian and booking officer for the kit and can be contacted at [shinbone266@gmail.com](mailto:shinbone266@gmail.com). The flash kit can be used for many purposes. I have used it for group photos and for accurately recording art works. Mark has used the equipment during Portrait Interest Group meetings as well as for individual portrait work. Other Club members have used the equipment for family portraits and for recording family

members during important events (weddings, birthdays and other anniversaries).

As a useful reference, Sean Tucker is a London based South African photographer. I like his thoughtful approach to photography topics. Have a look at this [short video](#):

Rob Wignell

### Friday–Sunday 18–20 June: Narooma

The organiser for this weekend is Rhonda Daniell. There is no set schedule for activities as a group. Instead a range of activities is suggested from which to choose, with the group getting together each evening to discuss the day's experiences and share information. Some activities require pre-booking. These should be booked with Rhonda ([rhonda.m.daniell@gmail.com](mailto:rhonda.m.daniell@gmail.com)) by 4 June.

#### Accommodation

[Big4 Narooma Easts Caravan Park](#) is suggested as it has can accommodate most of us and we can meet there. It has a variety of accommodation that you can [book online](#) and they have a room we could possibly use to present a Show and Tell on Saturday night.

There are motels and other types of accommodation in Narooma if you prefer.

#### Friday 18 June

- the iconic Australia Rock is a short walk from the caravan park. Also see seals or take the stairway from to road to the top of the cliff and views to Montague Island;
- Mill Bay walk – Mangroves, bridge, fresh fish shop, board walk beside the inlet, the Groin and boats returning, Montague island.

4.30 pm to 6.30 pm Sunset over the inlet and bridge

6.30 pm Meet for dinner at the Narooma Pub. **Booking required.**

#### Saturday 19 June

**Dawn:** Narooma Inlet and bridge

Montague Island Boat trip with optional snorkelling: departing 8:00 am. Enjoy a 20 minute voyage to Montague's resident seal colony. The tour also goes into the Lighthouse. This is weather dependent and on availability of craft.) **Booking will be required.**

OR

- **Boat House Trail**, park on the lake and walk around past the Boat Sheds to a view of the Boat Houses from the front. Walking distance from the Easts.



- **Sea scapes** – Dalmeny walking path or wherever you would like to pursue along the coast road to Dalmeny.
- **1080 Beach near Mystery Bay** – Beach, creek inlet, wildlife and birds and animals mostly wallabies. Mystery Bay turn off and first sealed road on right - National Park on the left and dirt road to the parking area. Steps down to the Beach.
- **Mimosa Rocks** – on Bermagui Tathra scenic drive: board walk, creek, leeches, fungi, rocks of different kinds, multiple views of ocean, beach etc. Check the website for Mimosa Rocks National Park.
- Mount Dromedary walk from Tilba. (For the fit)
- Rain Forest Drive off Princes Highway north of Narooma.
- Lake and rainforest walk at Narooma: there are temperate rainforest remnants in the area.
- Mystery Bay and beach- depending on tides there is a beach before Mystery Bay with good rock pools, turn first left after leaving the highway on dirt road past farm houses.
- Scenic drive – Narooma to Bermagui via Bermagui/ Tathra scenic Drive
- The bridge
- Montreal Gold Field Guided tour 2 pm – bookings required <http://www.montrealgoldfield.org.au/wp> (This is up to the individual)
- Bermagui Blue Pool

Dinner at Caravan Park (weather permitting) – Takeaway

**6.30 pm** Show and tell at the Caravan Park. (Hopefully as the first advice that no access COVID restrictions apply.)

#### Sunday 20 June

**Sunrise:** Glass House Rocks – these can be viewed from the Surf Beach or there is a walk down past the cemetery.

**Tilba Tilba** - Buildings – morning tea, cheese outlet, undulating scenery.

**Bookings for Friday night dinner and Montague Island with Rhonda by 4 June** ([rhonda.m.daniell@gmail.com](mailto:rhonda.m.daniell@gmail.com)).

Helen Dawes

### 22 June Dig-Sig meeting

If you are interested in attending the June dig-sig meeting and would like some feedback on some of your photographic work, then bring along two or more photos for viewing and feedback/critique. Remember that feedback is most useful when it is targeted, so you may wish to talk a little about your



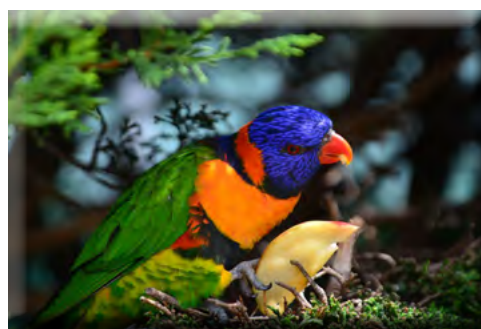
photo(s), what prompted you to take the photo, what message were you hoping to convey or what, if any, difficulty are you are trying to overcome.

If there is sufficient time, we will also be looking at the work of some famous photographers, so members are asked to think about which photographer's work they admire.

Norman Blom  
Dig-Sig Convenor

#### Thursday 24 June: 10:00 am – Gold Creek Walk-in bird aviary

The Canberra Walk-in aviary is a 1000 square metre, planted, privately owned aviary where the friendly free-flying birds can be observed, photographed and fed. The walk-in aviary's owners developed the aviary as a way to enjoy and share their feathered friends. The birds include Parrots, Finches, Doves and Quail from Australia and around the world.



Visitors to the Aviary walk among approximately 500 birds representing over 60 different varieties. This is your chance to brush up on your photographic skills. Cost is

\$13 for seniors. The cost includes some food to feed the birds to encourage them to come closer for better photos.

Helen Dawes

### Calendar of future events and meetings

Subject to change. Forward queries/suggestions to [outings@southsidecameraclub.org](mailto:outings@southsidecameraclub.org)

Outings and excursions are subject to change. If you are able to fill the gaps contact:

[outings@southsidecameraclub.org](mailto:outings@southsidecameraclub.org)

Date	Meeting, excursion, walkabout or group event	Convenor/speaker
Thurs 8 July	Meeting: Drone photography	Bill Blair
W/end July	Going bush	Julie Taylor/Laurie Westcott
July	Goulburn	Brian Moir
Tues 27 July	DIGSIG	Norman Blom
Sat 31 July	Portrait Interest Group	Mark Stevenson
Thurs 12 August	Meeting: Night photography	Richard Tatti
W/end August	ANU	Mark Stevenson
August	Dusk: Mt Stromlo	Laurie Westcott
Tues 24 August	DIGSIG	Norman Blom
Sat 28 Aug	Portrait Interest Group	Mark Stevenson
Thurs 9 Sept	Meeting: Portrait photography	Frank Doorhof
W/end Sept	NSW spring garden - Covid dependent	Mark Stevenson/Laurie Westcott
Sept	Botanic Gardens	Helen Dawes/Rhonda Daniell
Sat 25 Sept	Portrait Interest Group	Mark Stevenson
Tues 28 Sept	DIGSIG	Norman Blom
Thurs 14 Oct	Arboretum – STEPS forest	Mike Woolley
Thurs 14 Oct	Meeting: Identifying wildflowers – AGM	Warren Hicks
Tues 26 Oct	DIGSIG	Norman Blom
Sat 30 Oct	Portrait Interest Group	Mark Stevenson
W/end 30–31 Oct	Guthega weekend	Rob Wignell
Nov	Mulligans Flat	Laurie Westcott
Thurs 11 November	Meeting:	Dennis Lovatt
Nov	TBA	
Tues 23 Nov	DIGSIG	
Sat Nov 27	Portrait Interest Group	
Sun ? Dec	Christmas gathering by Lake Burley Griffin	
Thurs 9 Dec	Meeting: Year-end Show & Tell	

## ***Is it time to ditch your DSLR and move to mirrorless?***

Noted wildlife photographer Steve Perry addresses this question.

‘This is a question I’ve been getting on a daily basis and in this video we’ll examine all the pros and cons - plus I’ll give you my advice as well. If you’re struggling with this decision, this [video](#) is a must see!’

Submitted by Shane Baker

## **Online resources**

[Digital Photography Review](#)

[Photoaccess](#) – Manuka Arts Centre

## **From Paul Livingston**

Paul has been a regular online resource and also a former President of the Club.

[Photo lighting: things you should know](#)

[Shoot for the moon: tips on photographing the moon](#)

[Choosing shutter speed for long exposure landscapes](#)

[How to photograph flowers](#)

[A crafty visual exercise to boost your composition skills](#)

[How to take great photos at night](#)

[Full specs leak for the Panasonic GH5 Mark II – Yes, that’s correct, not the GH6](#)

[How to create fake window light for still life and food photography](#)

[Five tips to step up your portrait game without buying new gear](#)

[Canon reported to bring Auto focus Tilt-Shift lenses to RF mount this year](#)

[Fuji re-issues warning over fake camera batteries and how to spot them](#)

[This crazy lens lets you shoot full 360° photos and video without the need for stitching](#)

[Learning how to ‘see’ a photograph](#)

[Astrophotography: the Southern Cross and pointers](#)

[Track and field sports photography tips](#)

[All about developing your photography style](#)

[Setting up for great landscape pictures](#)

[Exposure triangle: The basics of Aperture, Shutter Speed, and ISO](#)

[The best tricks for taking pictures of your pets](#)

[Denoise AI photo editor updated to handle severe noise](#)

[When to use Photoshop VS Lightroom for landscape editing](#)

[The one big thing about water photography](#)

[Waterfall photography tips and the Cotton Candy Effect](#)

[Mirrorless cameras are overrated... by a lot!](#)

[Nikon kills off more of its APS-C and Full-Frame F Mount Lenses](#)

[Here are one hundred different ways to speed up ADOBE Premiere Pro](#)

## **Competitions**

## **Birdlife photography awards 2021: 28 May–2 August 2021**

After a huge 2020 competition, we’re excited to see the entries for the 2021 event.

We’re back with another special theme – Plovers, Dotterels, and Lapwings – as well as all the usual categories, including the portfolio prize!

The awards will open on May 28th and run through until 2 August. For updates and more information, check out the [awards website](#).

We have a top international panel line up for 2021, welcoming both new and returning judges alike, including:

Ian Wilson (BirdLife Photography, AUS)

Sabine Meyer (Audubon, USA)

Moose Peterson (USA)

Fiona Blandford (BirdLife Australia, AUS)

Raoul Slater (UK)

David Stowe (AUS)

Gail Bisson (CAN)

Reminder: when photographing wildlife, please ensure that you follow the [BirdLife Photography ethics standards](#).

The 2020 winners can also be seen on the [website](#).

## **The Club online**

### **Web site**

[www.southsidecameraclub.org/](http://www.southsidecameraclub.org/)

Please send material for the web site to [webmaster@southsidecameraclub.org](mailto:webmaster@southsidecameraclub.org)

### **Facebook**

### **flickr**

[Links](#) to the Club’s Facebook and flickr pages are available on the Club’s web site under the [images / members on line](#) page.

To join you will need a Facebook and/or a flickr account.

- Go to the groups page
- Search for Canberra Southside Camera Club
- Click on the ‘Join Group’ button.

The request to join will be sent to the president as the group moderator. If you don’t get a confirmation within a day or two email [president@southsidecameraclub.org](mailto:president@southsidecameraclub.org)



## Gear for sale or giveaway

### Nikkor lenses

Nikkor AF 50mm f/1.8D with Hoya UV filter: \$99

Nikkor AF-S DX 18-70mm F/3.5-4.5G IF-ED lens with Hoya UV filter. (HB-32 lens hood slightly damaged but functional.): \$99

Nikkor 14-24mm f/2.8G AF-S ED with CL-M3 semi-soft case: \$1,300\*

Nikkor 70-210mm f/4-5.6 Push-pull style zoom. Made in Japan. Hoya Skylight filter included: \$275\*

Nikon AF-S Teleconverter TC-17E II: \$300\*

### Flashes for Nikon

Nikon SB-600: \$150

Godox V860N (for Nikon): \$150



## Other

Fujifilm X100S-EE with Fuji case, metal lens hood and spare battery: \$625\*

Manfrotto 190 XProB tripod with 498RC2 ball head with 2x quick release plates and generic bag: \$225

*These items can be shipped to Canberra if interested*

\* *Price includes postage*

Contact: Shane Baker - shane@sb.id.au

## Giveaways

I've been having a clean out and I have a lot of old photography magazines to give away. Let me know if you are interested otherwise they will end up in the recycle bin.

I also have a couple of light-weight tripods I no longer use. Also free to anyone who wants them.

Email me at apm56@optusnet.com.au or phone 6254 0578.

Alison Milton



## Equipment list

Item	Custodian	Contact email
Elinchrome studio lighting equipment	Julie Taylor & Mark Stevenson	<a href="mailto:shinboner266@gmail.com">shinboner266@gmail.com</a>
Colour Munki screen and printer calibrator	Rod Burgess	<a href="mailto:canberrarod@hotmail.com">canberrarod@hotmail.com</a>
Fixed lighting kit: stands, light sources, extras	Mark Stevenson	<a href="mailto:shinboner266@gmail.com">shinboner266@gmail.com</a>

## Office bearers

Committee			
President	Julie Taylor		<a href="mailto:president@southsidecameraclub.org">president@southsidecameraclub.org</a>
Treasurer	Tim Heenan		<a href="mailto:treasurer@southsidecameraclub.org">treasurer@southsidecameraclub.org</a>
Secretary	Dennis Lovatt		<a href="mailto:secretary@southsidecameraclub.org">secretary@southsidecameraclub.org</a>
Ordinary member	Nicky Bazley-Smith		
Ordinary member	Warren Hicks		
Public Officer	Tim Heenan		
Non-committee positions			
Walkabout/excursion	Laurie Westcott, Rob Wignell, Helen Dawes		<a href="mailto:outings@southsidecameraclub.org">outings@southsidecameraclub.org</a>
DIG SIG	Norman Blom		<a href="mailto:digsig@southsidecameraclub.org">digsig@southsidecameraclub.org</a>
Portrait Interest Group	Mark Stevenson	0404 283 212	<a href="mailto:portrait@southsidecameraclub.org">portrait@southsidecameraclub.org</a>
Astro photography	John Mitchell		<a href="mailto:astro@southsidecameraclub.org">astro@southsidecameraclub.org</a> *
Newsletter Editor	Alison Milton	6254 0578	<a href="mailto:newsletter@southsidecameraclub.org">newsletter@southsidecameraclub.org</a>
Website Manager	Brian Moir	0414 834 249	<a href="mailto:webmaster@southsidecameraclub.org">webmaster@southsidecameraclub.org</a>

\* Please note this new group

*F22 gallery*



*ANU75th #3 Copland Court. Turn left for politics. Turn right for economics.*

*Bob Crawshaw*

*This year the ANU marks its 75th anniversary . I am doing a photographic series of campus landmarks to mark the occasion.*





*Nikon D850, 15-30mm @ 30mm, f11, ISO 64, 1-50th.  
Mark Stevenson*





*Dead Tree under the Milky Way, Cookardinia*  
*Bob McHugh*





*Male Gang-gang Cockatoo, Yarralumla  
Richard Arculus*



*Barcken fungi, Bendora Arboretum*  
*Alison Milton*





*Grevillea flower*  
*Nikon Z6 II with Tamron SP 90mm f/2.8 via FTZ adaptor at 1/100sec, f/7.1 and ISO 220*  
*Shane Baker*



*Ambience of the Tharwa Sandwash  
John Mitchell*

*A 2 stage shoot, 5 foreground images exposed for 3 to 4 minutes just prior to the moon setting. ISO about 800 & f2.8.  
The sky was then exposed for 10 seconds, f2.8, ISO 3200*





*Luminita Lenuta*





*Scarlet Honeyeater, Australian National Botanic Gardens  
Derek Trow*



*Crimson Rosella: Fujifilm XT2 and 55-200 mm lens  
Subramaniam Sukumar*





*Canberra City Uniting Church with Fujifilm XT2 and Laowa 9 mm lens  
Subramaniam Sukumar*









*Nikon D850, 15-30mm @ 30mm, f10, ISO 400, 1-500th.  
Mark Stevenson*





*Nikon D850, 15-30mm @ 30mm, f11, ISO 64, 1-50th.  
Mark Stevenson*





*Nikon D850, 15-30mm @ 30mm, f10, ISO 400, 1-125th.  
Mark Stevenson*





*Nikon D850, 15-30mm @ 30mm, f10, ISO 800, 1-100th.  
Mark Stevenson*





*Sulphur-crested Cockatoo in autumn leaves*  
Diane Cutting





*Little Wattle bird hawking insects at sunset  
Diane Cutting*



*Male and Female Red Capped Robins - rare visitors to the ACT  
Diane Cutting*





*Dispute between Brown Falcons*  
*Diane Cutting*



*About the time of Samhain, not far from Boorowa  
Bob McHugh*





*Fading Rainbow over Fairlight*  
Bob McHugh



*Village centre, Canowindra  
Bob McHugh*





*The Wharf Local, Tathra  
Peter Keogh*



*Rain drops and leaf*  
Nikon Z6 II with Nikkor Z 50mm f/1.8 S at 1/400sec, f/5.6 and ISO 100  
Shane Baker





*Grevillea Robin Gordon*  
Nikon Z6 II with Nikkor Z 50mm f/1.8 S at 1/60sec, f/8 and ISO 220  
Shane Baker





*Luminita Lenuta*





*Luminita Lenuta*





*Luminita Lenuta*





*Blood moon*  
*Nikon D500, Nikon 200-500 mm, ISO: 2500, f5.6, 1/3 sec*  
*Processed in Adobe Lightroom Classic*  
*Rob Wignell*





*National Arboretum  
Alison Milton*





*National Arboretum looking out over the Governor-General's House  
Alison Milton*





*Why am I wearing this?  
Alison Milton*





*National Arboretum  
Alison Milton*