

F22: Southside Camera Club newsletter



Volume 30 – Issue 2: March 2022

Contents

What's on this month	1
Reports	2
President's report	2
Guthega weekend report	2
Astro Photography Group report	2
Portrait Interest Group report	2
Outing to Mulligans Flat report	3
A BIG printing project	4
Help – Lost reader	5
Witnessing Bluetts	5
Offerings from Shane Baker	5
A plug for the new Nikon Z9	5
Online resources	6
From Paul Livingston	6
Nikon FTZ essential info	6
Phone and camera video editing software	6
Capture One changes	6
Black and white images using Affinity Photo	6
Exhibitions	7
The Club online	7
Web site	7
Facebook	7
flickr	7
Equipment list	7
Office bearers	7
From the Editor	7
F22 gallery	8

Meetings

7:30 pm: Woden Senior Citizens Club, 12 Corinna Street, Phillip

Third Thursday of the month

Next meeting Thursday 17 March. Presenter Mark Farnell –

Cinematography is all about the art of visual storytelling, what to include and how to light, while skilfully operating a camera. Save the date to see how Mark's images are influenced by his cinematographer's eye and we are guaranteed a story or two.



What's on this month

Date	Meeting, excursion, walkabout or group event	Speaker/convenor
Fri 4-20 March	Enlighten Festival: Fireworks / Balloons	
Sun 13 March	ANU walk	Mark Stevenson
Mon 14 March	Canberra Day activities	
Wed 16 March	Astro Interest Group	John Mitchell
Thurs 17 March	Meeting:	Mark Farnell
Sat 26 March	Portrait Interest Group	Mark Stevenson

Reports

President's report

The Manchurian Pears bright green, heart-shaped leaves are starting to show the first signs of the vibrant autumn shades of red and gold. The season change in Canberra promises to be explosive, great news for photographers.

Huge congratulations to Fiona Bowring Greer for being announced as one of the finalists in the National Photographic Portrait Prize 2022. Fiona shared the creative process she follows to produce a photographic series with us at the February meeting. The details she added about how she made the images and why she decided to include them in a series added another dimension to the story. Fiona also told a cautionary tale about why you need to prepare for the worst when it comes to your digital files. Thank you, Fiona, a very inspiring presentation.

A photographic series is a unified cohesive body of work that employs the same techniques, subject or palette throughout multiple works. Consider creating your own series, it can be an excellent way to improve your photographic skills and explore a particular theme or style in greater detail. Discussing your work with others can result in valuable feedback.

For the March meeting presentation, we are incredibly lucky to hear from Mark Farnell. Mark is a cinematographer and photographer; he has worked at the ABC on documentaries and dramas such as *Australian Stories* and *Sea Change*. Cinematography is all about the art of visual storytelling, what to include and how to light, while skilfully operating a camera. Save the date to see how Mark's images are influenced by his cinematographer's eye and we are guaranteed a story or two.

Hopefully members are making their short list of two images they would like to include in the SSCC 2022 Yearbook, more details soon.

Nicky Bazley-Smith
President

Guthega weekend report

Twenty-one Club members, including some spouses, came to Guthega to experience a wildly varied weekend of weather, some good company and photography.

Although the temperature on Friday afternoon and Saturday was mild in the mid teens, the rain seemed to be constant with occasional breaks.

To stay close to cars, in case we got too wet, we visited Island Bend on Saturday morning. It is about 12 km downstream from Guthega Dam and about 6 km from the Mungyang Power station. Many of the workers on these two structures lived at Island Bend in the early 1950s and, although the houses and facilities have been removed a long time ago, there is still evidence of the once thriving community that lived there. Photographically, there are many large gum trees that, with their wet bark, gave a rare opportunity to get images of these amazing trees in 'saturated' colours.

On Saturday afternoon, the weather seemed to clear a little so we ventured onto the new walking track that is being built from Charlottes Pass to Guthega. We walked to the swing bridge across the Snowy River near Illawong Lodge (a lodge for cross country skiers built during the 1950s). Predictably, the weather got worse as we made our way home and many were fairly wet by the end of the walk.

The forecast for Sunday was not much better than Saturday, but, surprisingly, overnight the skies cleared and we had a

sunny morning for photography at Charlottes Pass where we were able to find more iconic trees and some panoramic landscapes.



Around midday we returned to Guthega for lunch and to give the lodge a final clean before returning to Canberra as more clouds built up from the east.

I don't recall who proposed the idea of having a place where photos from the weekend could be shared. I thought it was a great idea and our Webmaster, Brian Moir, has added a Club Outings and Events menu item under the Images tab on our Club web site (southsidecameraclub.org). Well worth a look.

I am sharply aware of the privilege of being a member of the Australian Ski Club at Guthega and the access to the Snowy Mountains that this gives me. It has been a pleasure to share this great resource with members of the Southside Camera Club for more than 10 years and I hope to be able to do it for many years to come.

Rob Wignell

Astro Photography Group report

March has been disappointing for astro photography around the ACT and regional NSW. Lets hope the current La Nina weather pattern breaks down in time for the next suitable moon phase, which starts around 28 March till 9 April.

Skies in other places like western Victoria have been kinder and I spent 9 days away with 4 night's of suitable clear skies in the early AM hours.

John Mitchell

Portrait Interest Group report

The Portrait Interest Group met at York Park in Barton on Saturday, 19 February for it's first session of the year. It was a popular start to 2022 with about 10 photographers and two models attending. The York Park contains some mature and shady oak trees with photographers using both the deep shade and morning light to good effect. A number of props were available for use from umbrellas and hats to a picnic setting and even a motorcycle (thanks Iain).

Photographers gathered at the nearby National gallery to conclude the morning with the obligatory coffee, cake and chat.

The next meeting will be on Saturday, 26 March at the native gardens on the western (Senate) side of Parliament House and meeting by the old Surveyor's Hut off State Circle.

Mark Stevenson
Convenor, Portrait Interest Group

Outing to Mulligans Flat report

This was a late afternoon stroll through the Woodland Sanctuary at Mulligans Flat Nature Reserve hoping to catch the cooler part of the day, see a few of the local animals and birds and possibly score some nice photos in the late afternoon sun for the following Virtual outing subject on Gum Trees.

Despite weather warnings, the leisurely walk was enjoyed by 14 or so members. Due to abundant woody subjects

and enthusiasm some missed their track-turnings and saw more of the reserve than intended. However, all enjoyed the opportunity to get together again for a Club outing and, those who could, rounded off the outing with a pleasant evening meal together at 'Frankies at Forde'.

Laurie Westcott

Subject to change. Forward queries/suggestions to outings@southsidecameraclub.org

Outings and excursions are subject to change. If you are able to fill the gaps contact:

outings@southsidecameraclub.org

Date	Meeting, excursion, walkabout or group event	Convenor/speaker
Thurs 7 April	Virtual outing: Easter, what it means to you	Zoom
Fri 15-18 April	Easter	
Wed 20 April	Astro Interest Group	John Mitchell
Thurs 21 April	Meeting: Black and white photography	Shane Baker
Mon 25 April	ANZAC Day	
Thurs 28 April	Arboretum, Autumn colours	Mike Woolley
Sat 30 April	Portrait Interest Group	Mark Stevenson
Thurs 5 May	Virtual outing: Abandoned, used and derelict	Laurie Westcott
Sun 8 May	Walk to London Bridge, Googong	Rob Wignell
Wed 18 May	Astro Interest Group	John Mitchell
Thurs 19 May	Meeting	
Thurs 26 May	Fungi walk	Helen Dawes
Sat 28 May	Portrait Interest Group	Mark Stevenson
Thurs 2 June	Virtual outing: Night street photography	Laurie Westcott
Mon 13 June	Queen's Birthday: Trooping of the colours	Rob Wignell
Wed 15 June	Astro Interest Group	John Mitchell
Thurs 16 June	Meeting	
Sat 25 June	Portrait Interest Group	Mark Stevenson
Thurs 30 June	Ginninderry to Shepherds Lookout walk	Laurie Westcott
Thurs 7 July	Virtual outing: Bridges	Laurie Westcott
Fri 15-17 July	Burrawang weekend	Laurie Westcott
Wed 20 July	Astro Interest Group	John Mitchell
Thurs 21 July	Meeting	
Sat 31 July	Portrait Interest Group	Mark Stevenson
Thurs 4 Aug	Virtual outing:	Laurie Westcott
Wed 17 Aug	Astro Interest Group	John Mitchell
Thurs 18 Aug	Meeting	
Sat 27 Aug	Portrait Interest Group	Mark Stevenson
Thurs 1 Sept	Virtual outing: Phone photography	Laurie Westcott
Wed 14 Sept	Astro Interest Group	John Mitchell
Thurs 15 Sept	Meeting	
Sat 24 Sept	Portrait Interest Group	Mark Stevenson
Thurs 6 Oct	Virtual outing:	Laurie Westcott
Wed 19 Oct	Astro Interest Group	John Mitchell
Thurs 20 Oct	Meeting	
Sat 29 Oct	Portrait Interest Group	Mark Stevenson
Thurs 3 Nov	Virtual outing	Zoom
Wed 16 Nov	Astro Interest Group	John Mitchell
Thurs 17 Nov	Meeting	
Sat 26 Nov	Portrait Interest Group	
Sun 4 Dec	Christmas gathering by Lake Burley Griffin	
Thurs 15 Dec	Meeting: Year-end Show & Tell	

A BIG printing project

I have a friend who is into model railways. So much so that he has built a 4x4 metre loft in his garage to house his hobby. With his knowledge of electronics and computers he is slowly building a system that will run trains on a shelf about 600 mm wide that goes right around the room. The centrepiece of his train set is a re-creation in 3D printed miniature of the Bombala Railway Station.

For a number of years we have been talking about driving to Bombala to get photographs of the area to use as a background on the wall, but, with great innovation my friend came across what turned out to be a much better way of getting the background panorama. He has a friend who owns Microsoft Flight Simulator (FS) and FS uses Google Earth images for the background to the flights.

In an FS small plane, he and his friend flew to Bombala and, at a suitable height that I could not have reached with my camera, they were able to park the plane and take multiple images of the surrounding countryside behind Bombala.

My friend gave me the images and asked if I could do anything with them. I must say that I had a lot of reservations of whether there would be enough detail to print anything other than square coloured pixels but I promised to have a go.

The images had sufficient overlap that they stitched very well using Lightroom Classic and produced a 4 MP JPEG image that was 20,041 x 2356 pixels.

I have an Epson 7880 printer that can print up to 600 mm wide and can use either sheet or roll paper. Prior to this project, the largest print I had made was an A2 size sheet, which is 420 x 594 mm. I bought the printer second hand and it came with two unused rolls of paper that are both good quality 260 gsm. They are 60 cm wide by 25 metres long, so, I had plenty of paper to work with.

Before I was ready to do a 4 metre long print I needed to do a lot of testing. The Epson manual was not at all helpful on how to use the roll paper setting so, I needed to work out how to use that and how to operate the guillotine built into the printer. For printing size, the answer turned out to be to create a custom paper size for the print. With a bit of trial and error I was able to get the guillotine to cut in the place I wanted.

The initial stitched image was fairly washed out so, in Lightroom I made some colour and saturation adjustments and produced some test prints of slices of the panorama to get a sense of tone and proportion for the complete print. Pleasingly, these test prints showed that there was enough detail in 2356 pixels of the vertical dimension to print a recognisable result that showed trees and animals and fences and distant mountains and clouds. The trees had smudges for leaves but, because it is a background to the models this was not critical.

The final calculation was to work out the proportions for the image so that it would print four metres long (about 47 cm) and create the custom paper size for the print.

My Epson 7880 printer is in my garage because it is too big to have in the house. In preparation for the printing job I removed the cars, vacuumed the garage floor and taped some brand new blue tarpaulins on the floor so the print would remain clean. I then connected my laptop to the printer, triple checked all the settings and pressed the Print button.

It 'only' took 90 minutes to complete the print. The first half hour was the worst as I worried about all the possible things that I imagined could go wrong. It was wasted worry. The progress was slow but, eventually, the guillotine in the printer cut the paper at the end of the print.

The photos show the progression through to the final print on the floor.



A downside of roll paper is that the paper has a curl in it from being tightly rolled for an extended period of time. The solution to this is to roll the paper in the opposite direction for long enough to correct the curl. I laid a strip of blue and white paper cleaning towel the full length of the print before doing the anti curl roll so that the printed surface was protected from rubbing on the harder printer paper before delivering the finished product to my friend.



It now has pride of place on a wall behind the Bombala part of my friend's model railway. He will have to do some more FS flying to get some background for the other three walls.

This was a long way from the 'fine art' printing that my printer is capable of but regardless, it was an extremely satisfying project.

Rob Wignell

Help – Lost reader

In a recent clean-up I came across two Sony Memory Sticks. One has a 32 MB capacity and the other must have cost a fortune because it can store a whole 1GB. It actually calls itself a Memory Stick Pro and I guess that you would have to be proud of that sort of capacity in the early 2000's when I had a small Sony point and shoot.

My request is for anyone who has a card reader that can read an old Sony Memory Stick to contact me so that I can find out what (if anything) is on these cards.

Rob Wignell
0416055322
rob_wignell@hotmail.com



On the western edge: Witnessing Bluetts

This is a photography course being run by Photo Access over seven months (one session per month). It may not interest anyone but I thought I'd include it anyway just in case.

The cost is \$395 with the first session at the end of April.

One reason I'm including this is for anyone with an environmental heart. I don't consider myself a Greenie but I am concerned that Bluetts Block (near Denman Prospect) is under threat of being subsumed into the further development of Denman Prospect. My feeling is that this project is partly aimed at documenting the flora and fauna of this area to help build the case to retain this area as a nature reserve.

Note however, that you need to be a member of Photo Access to participate.

If anyone is interested, details of the course, and sign up can be found on the [Photo Access web site](#).

Offerings from Shane Baker

A plug for the new Nikon Z9

"What is an ocean photographer (..) doing hundreds of miles away from the ocean in an ice cave?"

National Geographic photographer and Nikon Ambassador Thomas Peschak was intrigued to explore an area that he has known since his childhood hiking with his parents, yet had never approached photographically. Much in line with his photographic mantra of showing the beauty of nature as much as the man-made destruction through his work and long-term projects, he took the Z 9 and went out to create a 'mini-National Geographic-like Story' capturing two specific photos to tell it all:

1. The ominous beauty of a melting glacier from the inside looking out to the iconic Matterhorn. This perspective should not even be possible, were the glacier intact. However, this unseen point of view is as visually impressive as it is thought provoking.
2. Thomas Peschak creates a visual 'time machine', exploring the exact space and the view of an old photograph showing the dramatic melting of the Gornergletscher: Combining the historic image with a staged re-enactment on the original tells the horrible reality of climate change, while the viewer is invited to linger on the details.

Both images tell important sides of the story of climate change, and they urge the viewer to reconsider their own lifestyle, showing how much beauty is out there that needs to be protected and saved.

This [video](#) is also about climate change and the use of photography in protecting the environment.

Steve Perry: Nikon FTZ essential info and speed tests

So, what do you really know about the Nikon FTZ adapters for the Z series mirrorless? This [video](#) reveals everything you need to know about the Nikon FTZ adapters.

Phone and camera video editing software

[Free video editing software](#) is a great way to get started with creating videos for YouTube or for some other purpose without breaking the bank. Some of which are quite easy to use with basic features, while others have more advanced features to help you produce high quality videos. This Top 5, countdowns the absolute best free video editing software for Windows, Linux, and Mac. All of which have no time limits or forced watermarks.

I can't vouch for most of the comments in the video, although their remarks about da Vinci Resolve seem spot on.

Capture One changes

In the past, Capture One has been available as the Pro version, (which works with virtually all cameras) and brand versions, which would work only with files from Nikon, Fuji or Sony respectively.

Capture One announced in January 2022 that they will cease to sell licences or subscriptions to these versions.

Capture One ambassador Paul Reiffer explains the new arrangements, including some attractive transition deals in the first part of this [video](#). As far as I'm aware, the free express (ie: lite) versions for Nikon, Fuji or Sony will continue.

Black and white images using Affinity Photo

Easily create beautiful black and white images using Affinity Photo and the simple, easy to follow process in this [video](#). It will show you a workflow editing three images from different cameras – two are raw files, and one is an overexposed jpg image. See how the process creates striking black and white photos regardless of the file type.

Shane Baker

Online resources

[Digital Photography Review](#)

[Photoaccess](#) – Manuka Arts Centre

From Paul Livingston

Paul has been a regular online resource and also a former President of the Club.

[Street photography tips with any camera](#)

[Wedding photo tips on a bad weather day](#)

[The artist behind the viewfinder: Emotional photography insight](#)

[Understanding basic light properties for photography](#)

[Five camera settings to master first](#)

[The delicate balance of photographing flowing water](#)

[Top 10 composition tips in photography](#)

[Landscape photography: is a medium format camera worth it?](#)

[Time lapse photography: 5 tips for getting started](#)

[Creative photography: technique without purpose](#)

[Flash photography tutorial: bouncing flash to soften light](#)

[Landscape photography at twilight](#)

[Macro flower photography tutorial with a telephoto lens](#)

[Photographing birds in flight](#)

[Understanding DPI and resolution](#)

[Interesting photo of the day: deconstructed DSLR](#)

[Images are stories: the case for storytelling photography](#)

[Techniques for dodging and burning landscapes in Photoshop](#)

[ON1 Photo RAW Editor Version 2022.1](#)

[Astro photography tips and camera settings](#)

[Are you using your light meter correctly?](#)

[Autofocus tips for tack sharp photography](#)

[Wildlife photography from your backyard](#)

[Fixing underexposed images](#)

[Tips for photographing lightning at night](#)

[Water drop photography tutorial](#)

[Ring photography tutorial](#)

[Photographing flowing fog with a long exposure](#)

[How to use auto exposure lock on a DSLR camera](#)

[How to photograph smoke](#)

[Location portrait: wide angle or telephoto lens?](#)

[Manual settings for beginner photographers](#)

[Fixing backlighting in the photo editing stage](#)

[Using moonlight for landscape photography](#)

[Bounce flash photography tips and secrets](#)

[Tips for shooting landscape photos in heavy rainfall](#)

[Four basic steps to take a star photograph](#)

[10 Photography assignments to stimulate your creativity](#)

[In-camera photography tricks and techniques](#)

Exhibitions

National Gallery of Australia

National Library of Australia

See the [National Library's web site](#) for more of 'What's on'.

National Museum of Australia

The Club online

Web site

www.southsidecameraclub.org/

Please send material for the web site to
webmaster@southsidecameraclub.org

Facebook

flickr

[Links](#) to the Club's Facebook and flickr pages are available on the Club's web site under the [images / members on line](#) page.

To join you will need a Facebook and/or a flickr account.

- Go to the groups page
- Search for Canberra Southside Camera Club
- Click on the 'Join Group' button.

The request to join will be sent to the president as the group moderator. If you don't get a confirmation within a day or two email president@southsidecameraclub.org

Equipment list

Item	Custodian	Contact email
Elinchrome studio lighting equipment	Julie Taylor & Mark Stevenson	shinboner266@gmail.com
Colour Munki screen and printer calibrator	Rod Burgess	canberrarod@hotmail.com
Fixed lighting kit: stands, light sources, extras	Mark Stevenson	shinboner266@gmail.com

Office bearers

Committee			
President	Nicky Bazley-Smith		president@southsidecameraclub.org
Treasurer	Tim Heenan		treasurer@southsidecameraclub.org
Secretary	Kumar Sukumar		secretary@southsidecameraclub.org
Ordinary member	Vacant		
Ordinary member	Warren Hicks		
Public Officer	Tim Heenan		
Non-committee positions			
Walkabout/excursion	Laurie Westcott, Rob Wignell, Helen Dawes		outings@southsidecameraclub.org
Portrait Interest Group	Mark Stevenson	0404 283 212	portrait@southsidecameraclub.org
Astro photography	John Mitchell		astro@southsidecameraclub.org
Newsletter Editor	Alison Milton	6254 0578	newsletter@southsidecameraclub.org
Website Manager	Brian Moir	0414 834 249	webmaster@southsidecameraclub.org

From the Editor

First of all, thank you to those members who have continued to send contributions to the newsletter. With the re-establishment of a full program of outing for this year, hopefully other members will have more photographic opportunities and be able to offer contributions.

Recently I found I was not receiving some emails from members. I discovered that this was due to a change of the server used by the Club's web site and I had not updated some information on my PC to allow emails sent to the newsletter@southsidecameraclub.org email address. This has now been fixed so emails either to my personal address or the newsletter address should now be received. If you think you have sent an email and I have responded to you please resend.

2021 yearbook

Contributions to the 2021 Yearbook are now due. To date only four members have sent photos. Even though last year did not include a lot of Club outings I'm many of you would be able to find two photos to include in the book. It will not be worth publishing if we don't get enough members contributing. So please dig deep into your photos and send them as soon as possible.

As always, you can submit two photos: one in portrait profile and one in landscape. Please also include a short blurb about yourself. A profile photo of yourself is optional.

Looking forward to a great year of seeing your photos.

Alison Milton
F22 Editor

F22 gallery



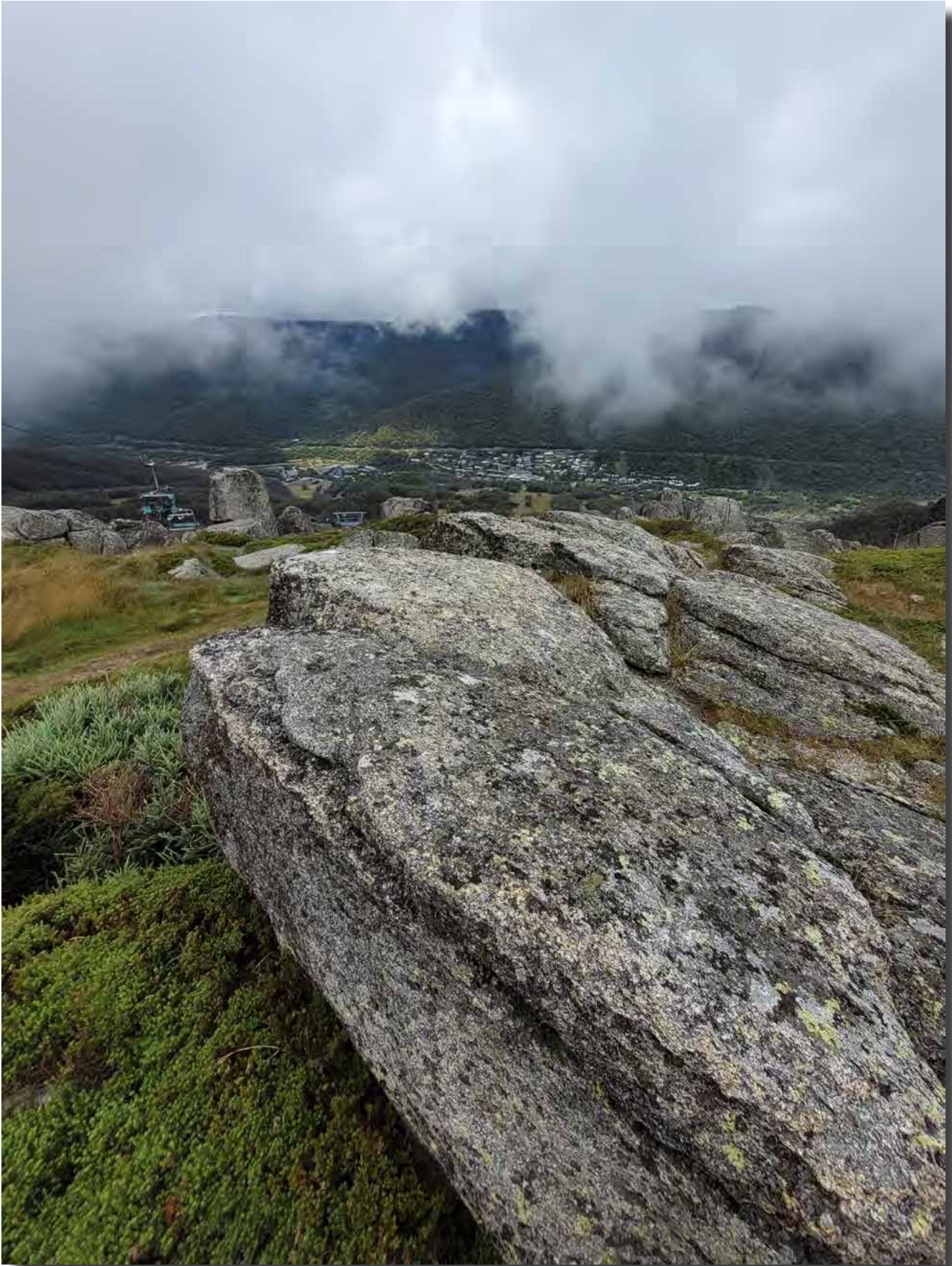
*Let it rain
Bob McHugh*



The heart of the matter
Bob McHugh



*Little corella. Canon 60D with Canon 100-400 L lens
Rod Burgess*



*View from Crackenback to Thredbo through the mist
Bill Blair*



*Attractive path on Merritt's Nature Trail
Bill Blair*



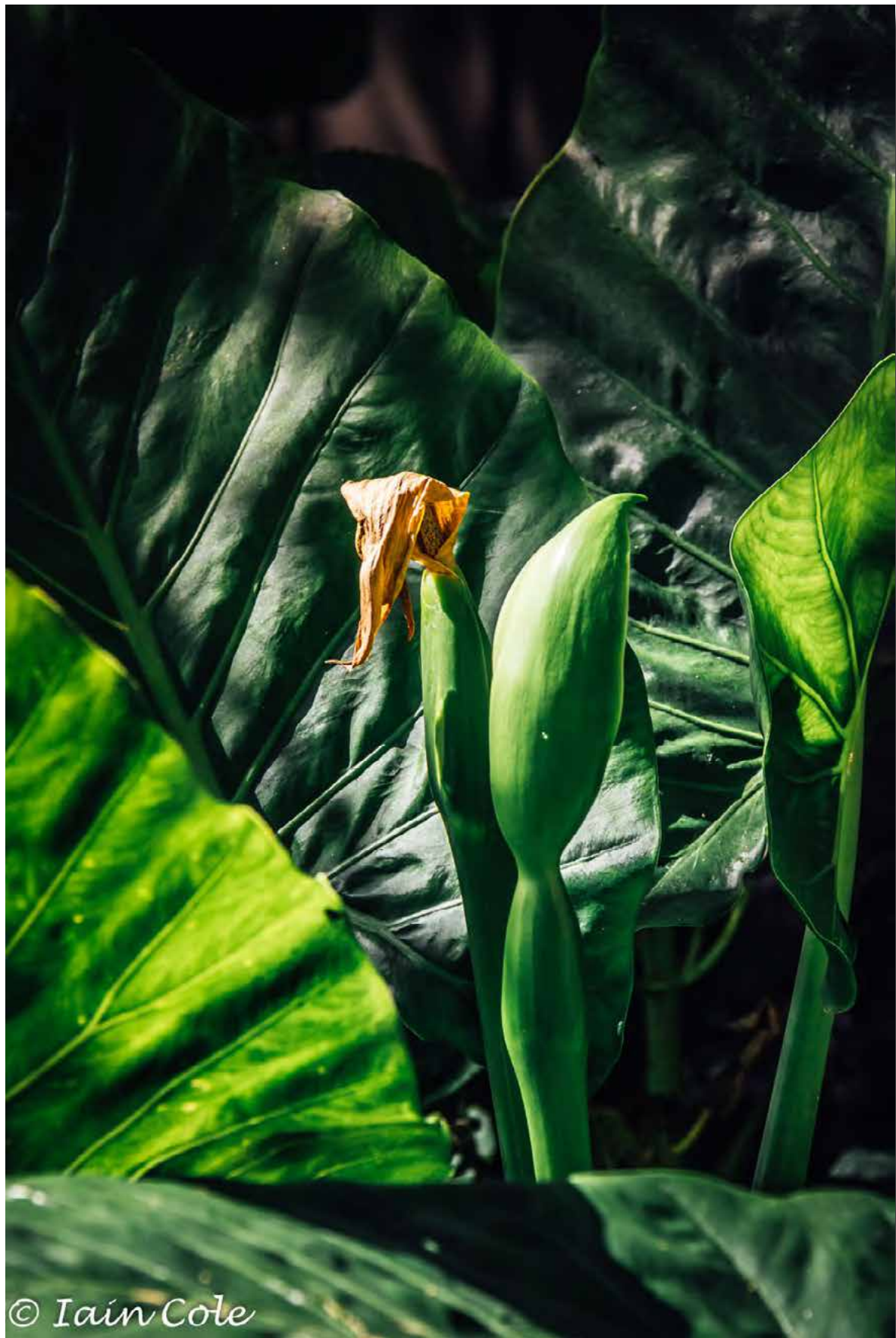
*Gum Trees, Wanniasa Nature Reserve
Tony Garr*



*Pensive. York Park portrait interest group. Model: Kristine
Iain Cole*



*York Park portrait interest group. Model: Belle
Iain Cole*

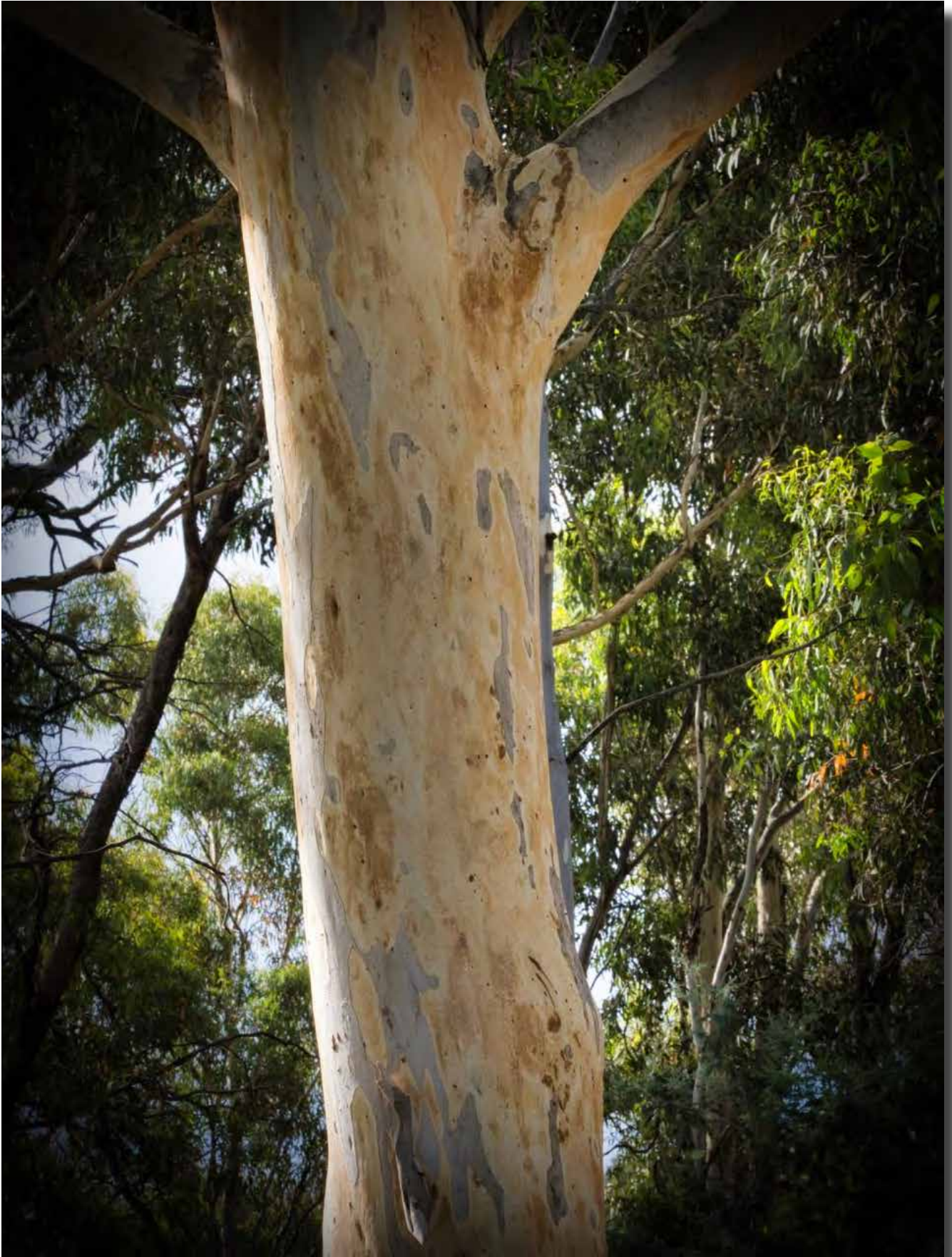


© Iain Cole

Lifecycle. Elephant Ear spike
Iain Cole



*Guthega
Subramaniam Sukumar*



Eucalyptus Blakelyi Red Gum, Mulligans Flat NR. Olympus E-M1 mk3 iso2000 f/18 1/160sec
Laurie Westcott



Eucalyptus Blakelyi Red Gum, Mulligans Flat NR. Olympus E-M1 mk3 iso200 f/7.1 1/100sec
Laurie Westcott



Guthega Spitfires
Giles West



*Portrait Interest Group
Mark Stevenson*



*The Carillon and the Jet base
Bob McHugh*



Raindrops
Bob McHugh



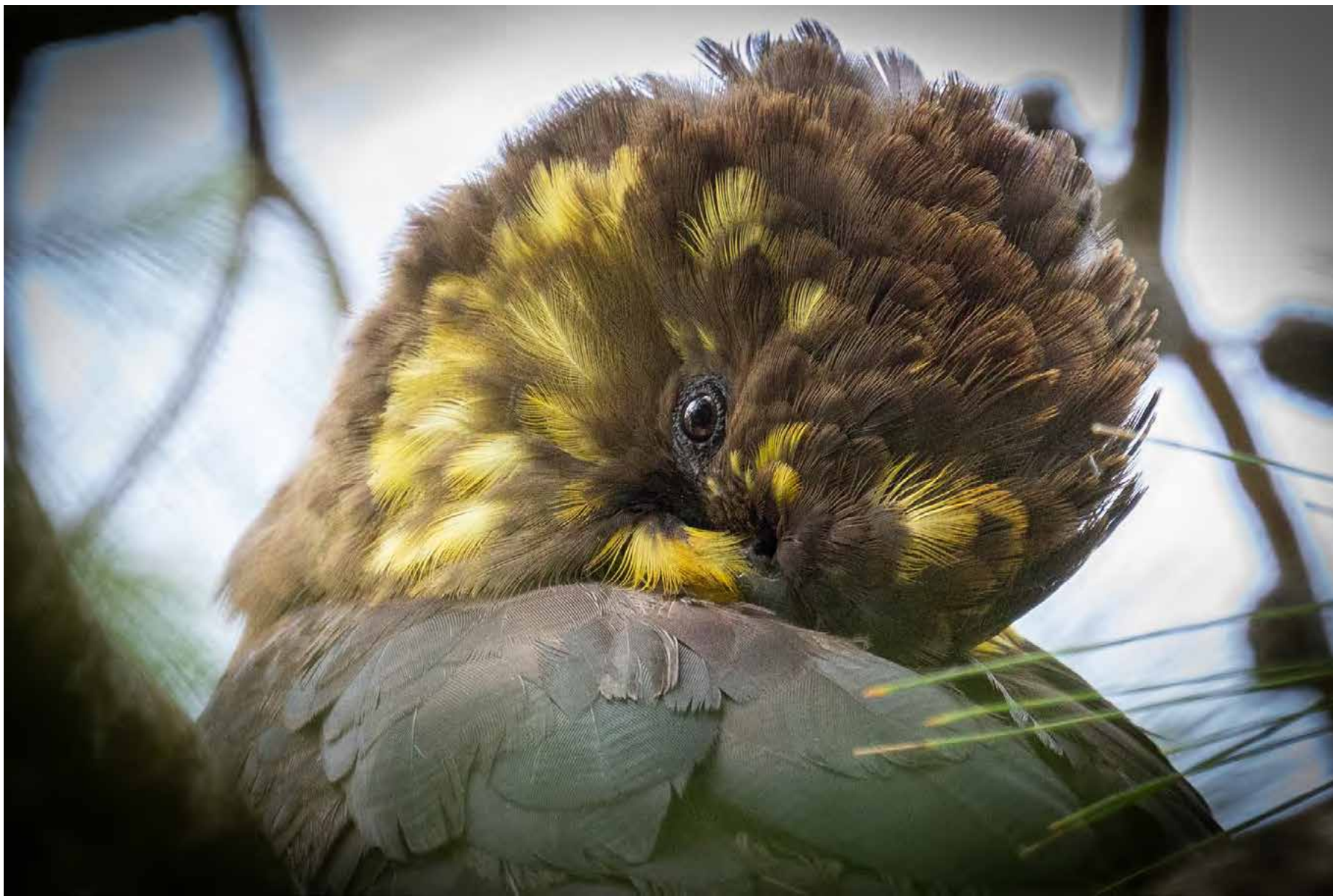
Silurian yellow
Bob McHugh



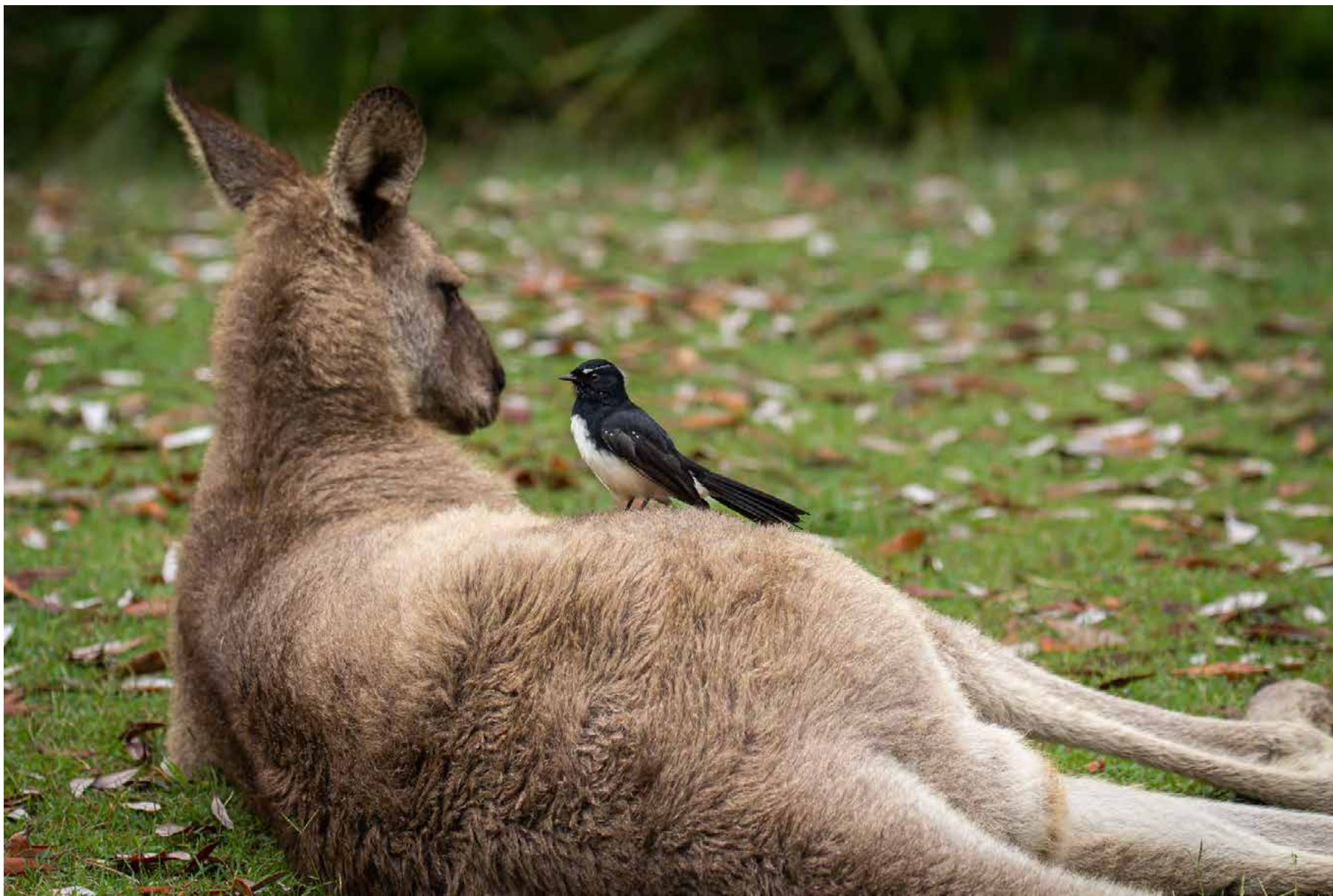
*Warraderry Creek_
Bob McHugh*



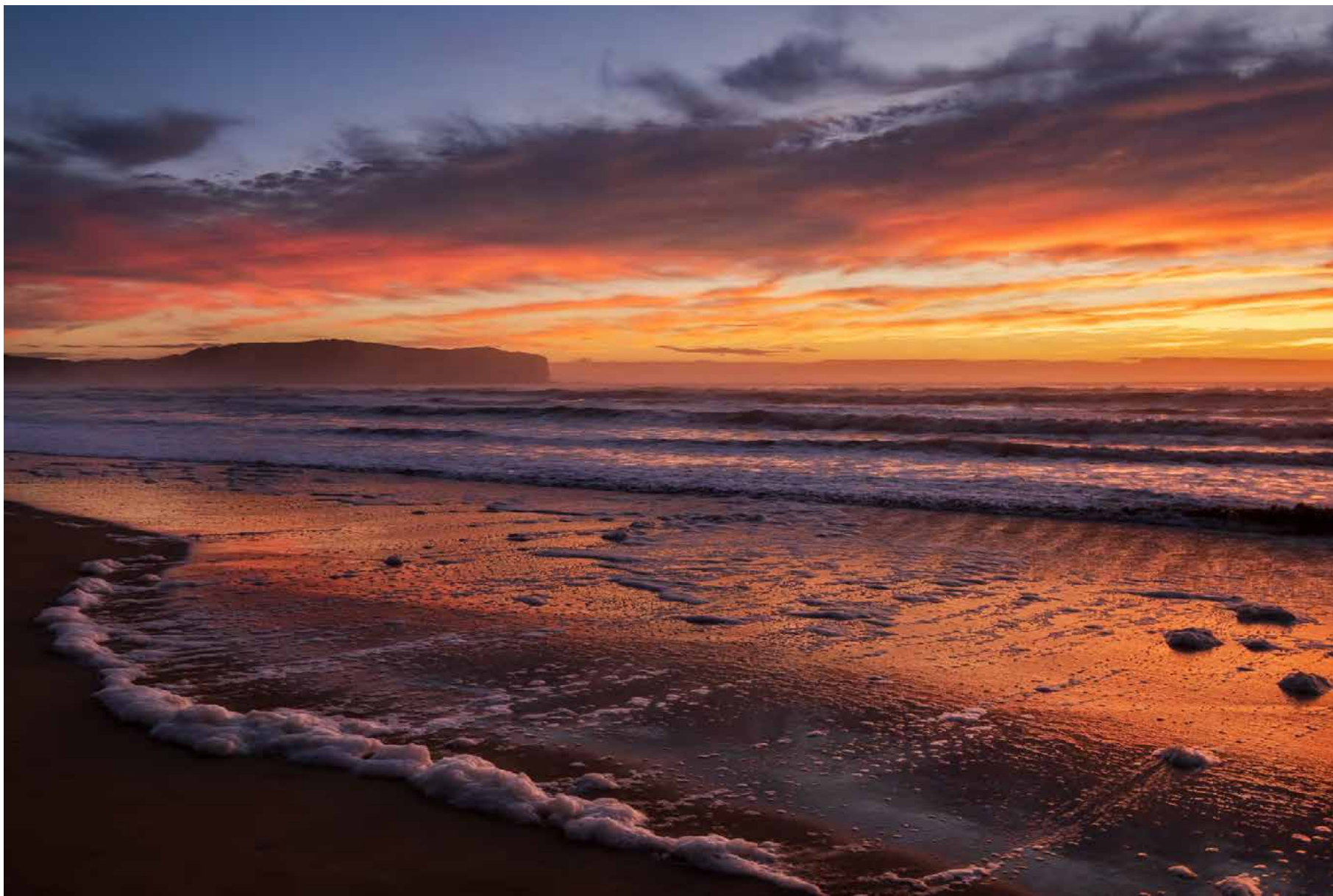
*Silvereye in comfrey. Canon 60D with Canon 100-400 L lens
Rod Burgess*



*A Glossy black cockatoo resting, South Durras. Canon 60D with Canon 100-400 L lens
Rod Burgess*



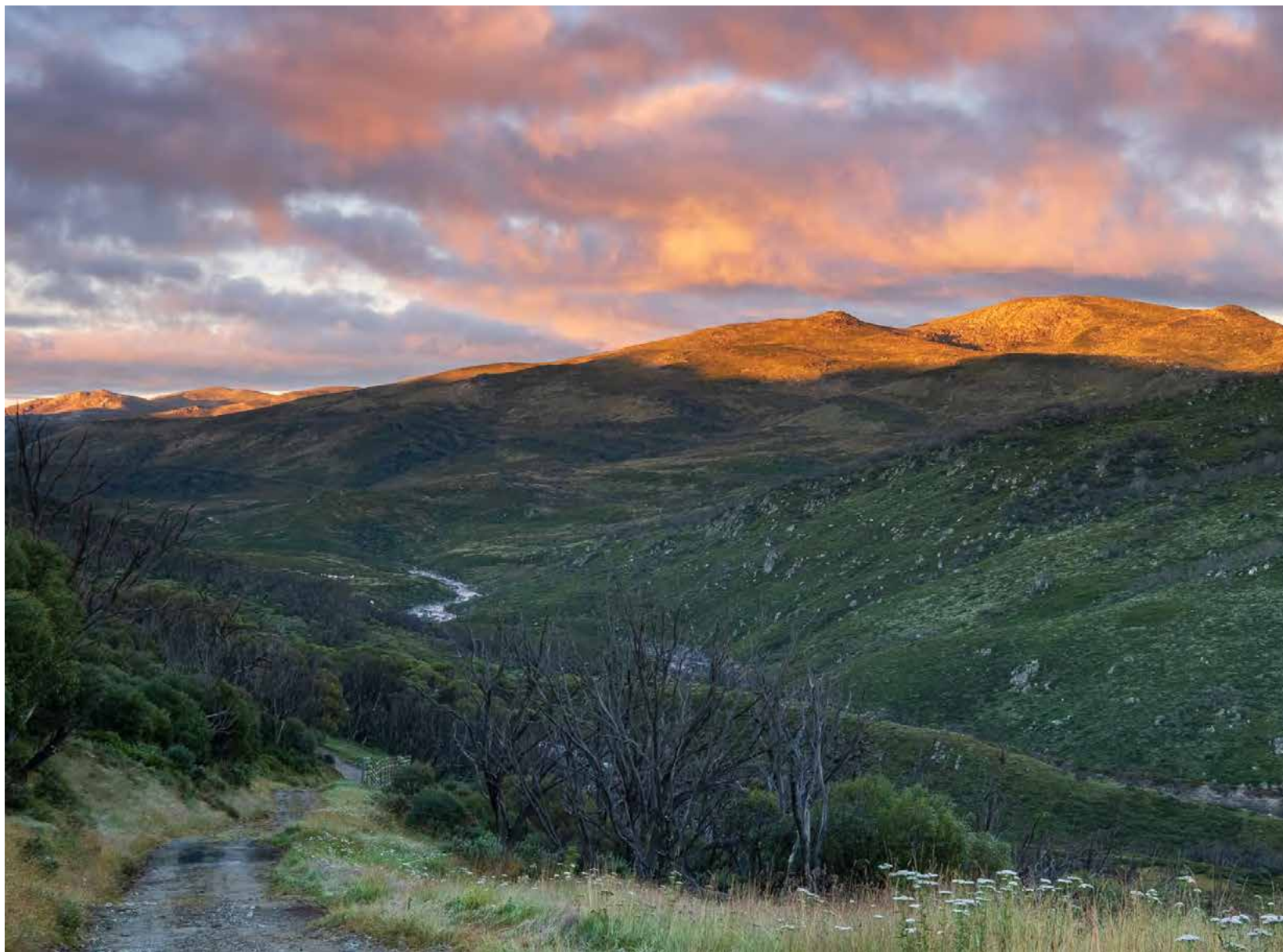
*A handy perch for a willy wagtail
Rod Burgess*



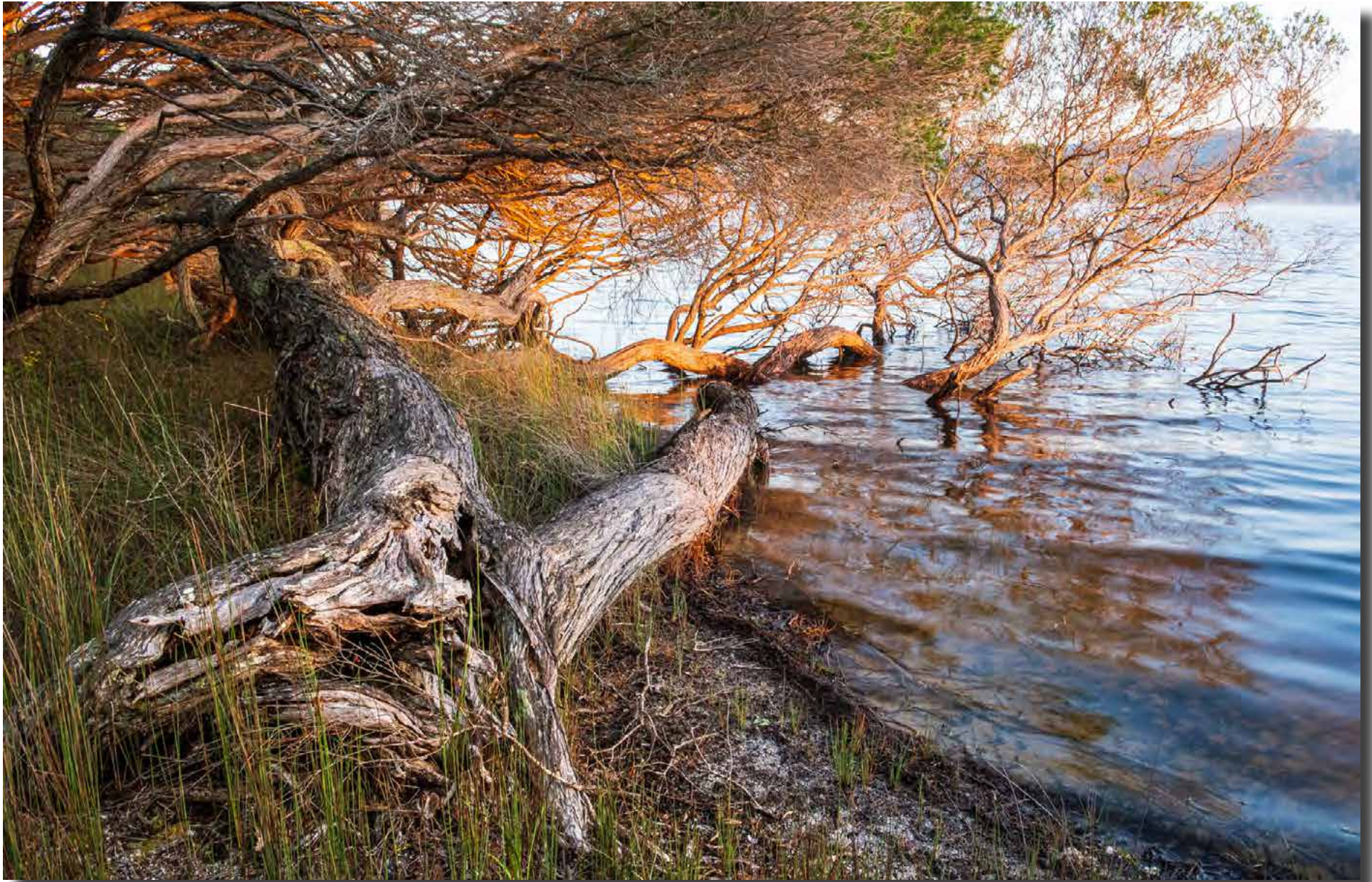
*A foamy sea at sunrise, South Durras
Rod Burgess*



*Rocks and water flows, Malua Bay
Rod Burgess*



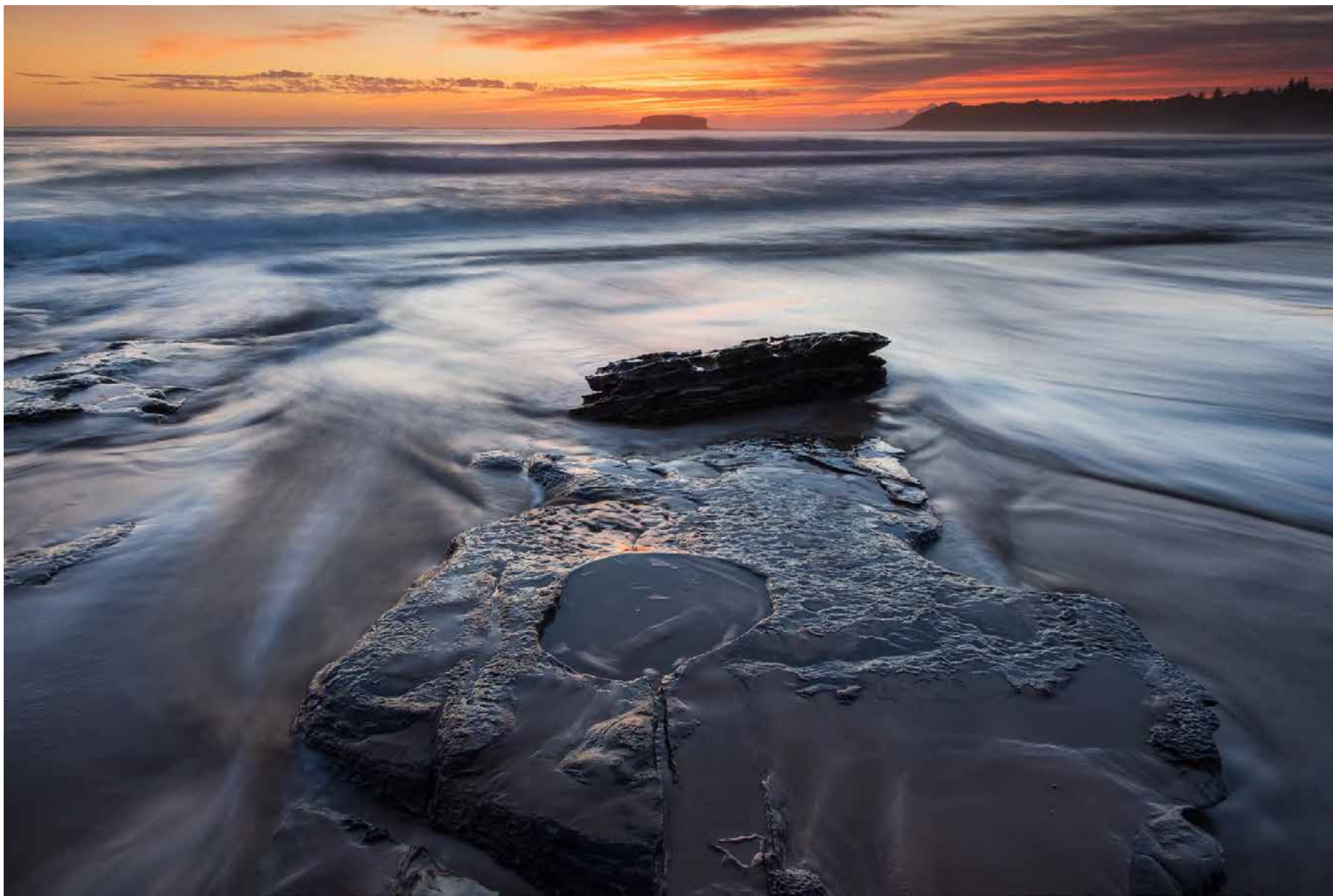
*Dawn colour at Guthega
Rod Burgess*



*Warm and cool light, South Durras. Fuji XT2 with Fuji 16mm f2.8 lens
Rod Burgess*



*Late afternoon, Coolamon Ridge. Fuji XT2 with Fuji 16mm f2.8 lens
Rod Burgess*



*Sunrise light, Wallagoot Lake. Fuji XT2 with Fuji 18-55 lens
Rod Burgess*



Belle at high speed
Tony Garr



*Gum Trees, Wanniasa Nature Reserve
Tony Garr*



*Gum Trees, Wanniasa Nature Reserve
Tony Garr*



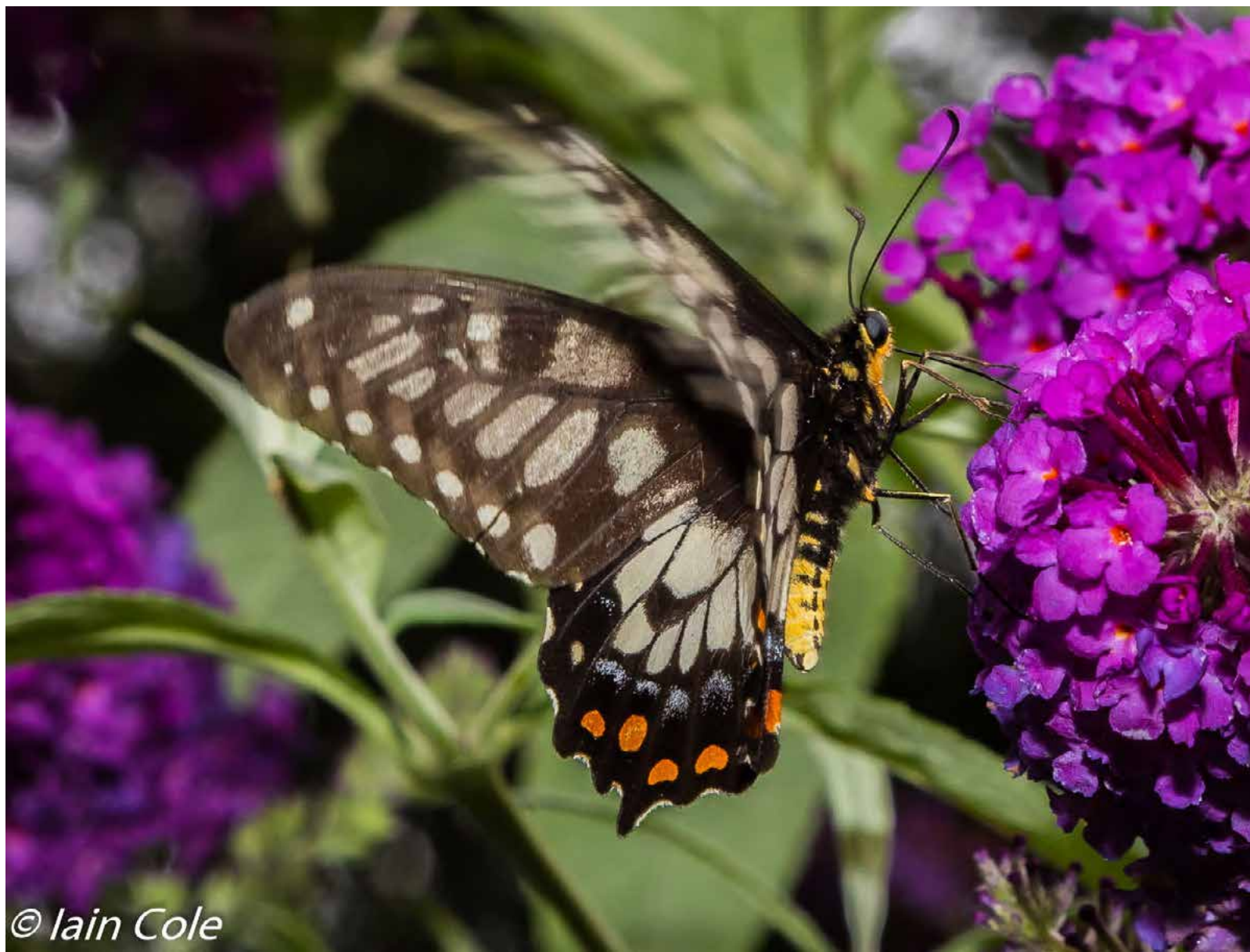
*Gum Trees, Wanniasa Nature Reserve
Tony Garr*



*Picnic with magpie. York Park portrait interest group. Model: Kristine
Iain Cole*



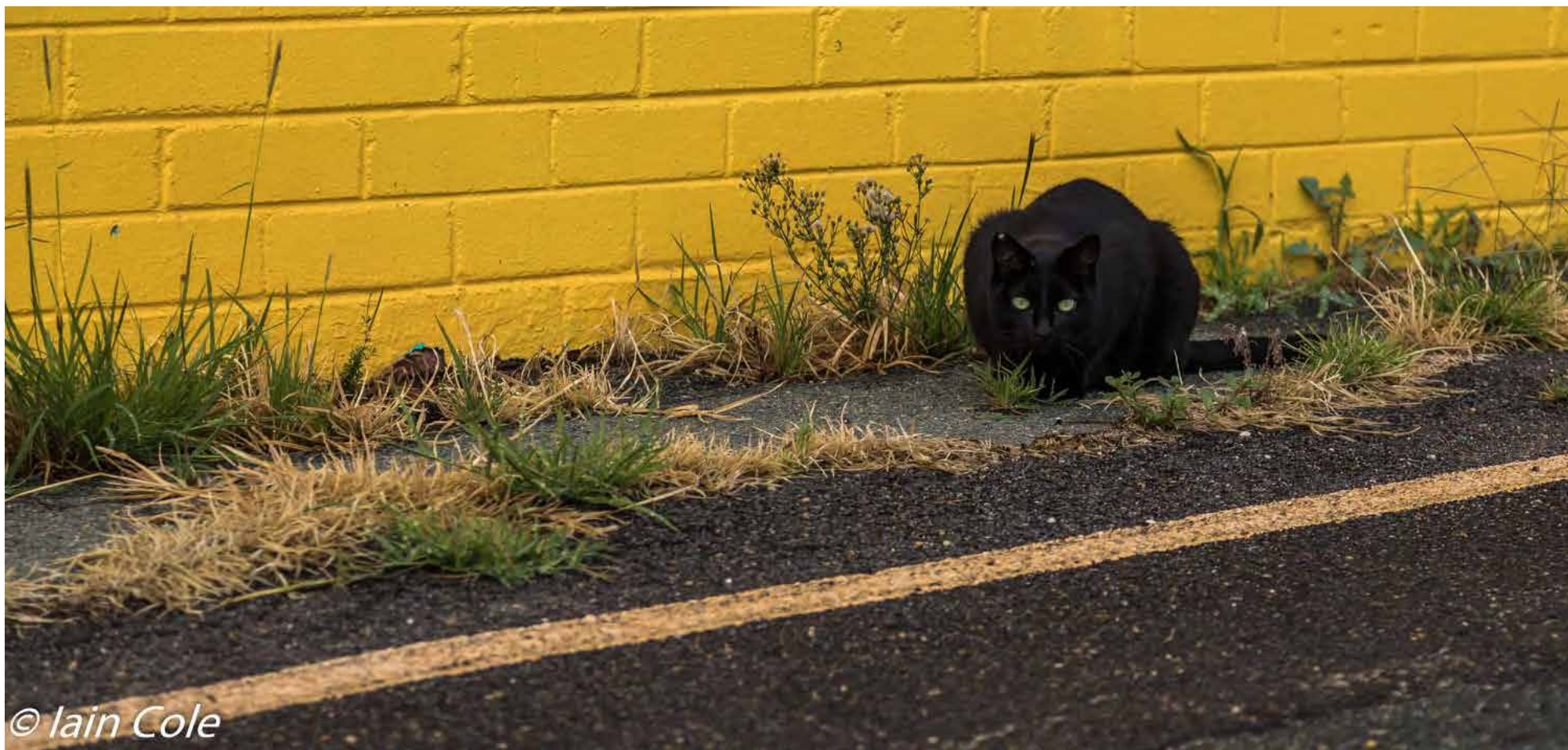
*Film Noir. York Park portrait interest group. Model: Belle
Iain Cole*



*Last day of summer. Butterfly on Buddlia
Iain Cole*



Staring into the Abyss. Snail on Elephant Ear
Iain Cole

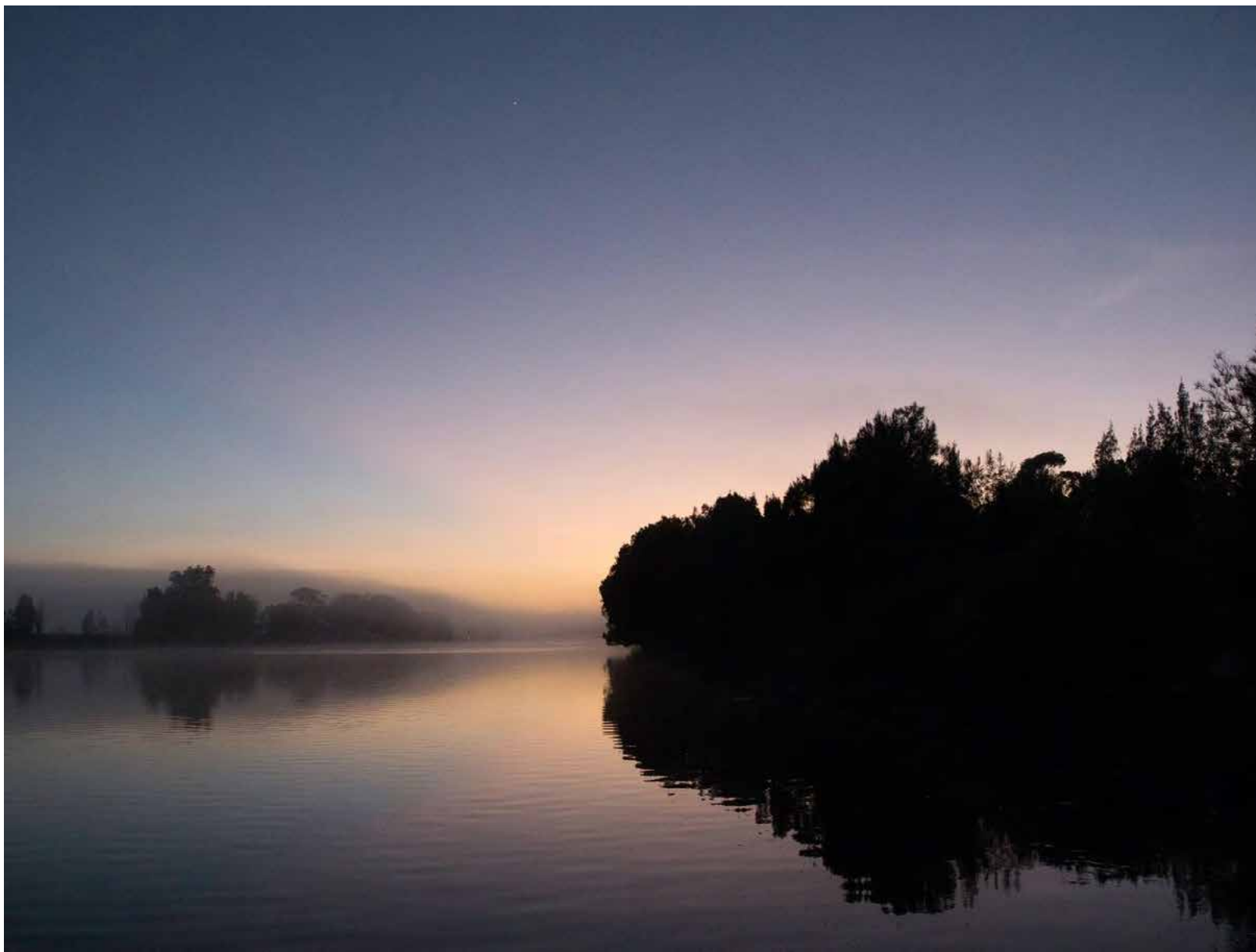


© Iain Cole

Come on, if you dare. Semi-feral cat in Fyshwick
Iain Cole



*Guthega
Subramaniam Sukumar*



*South Coast
Laurie Westcott*



*South Coast
Laurie Westcott*



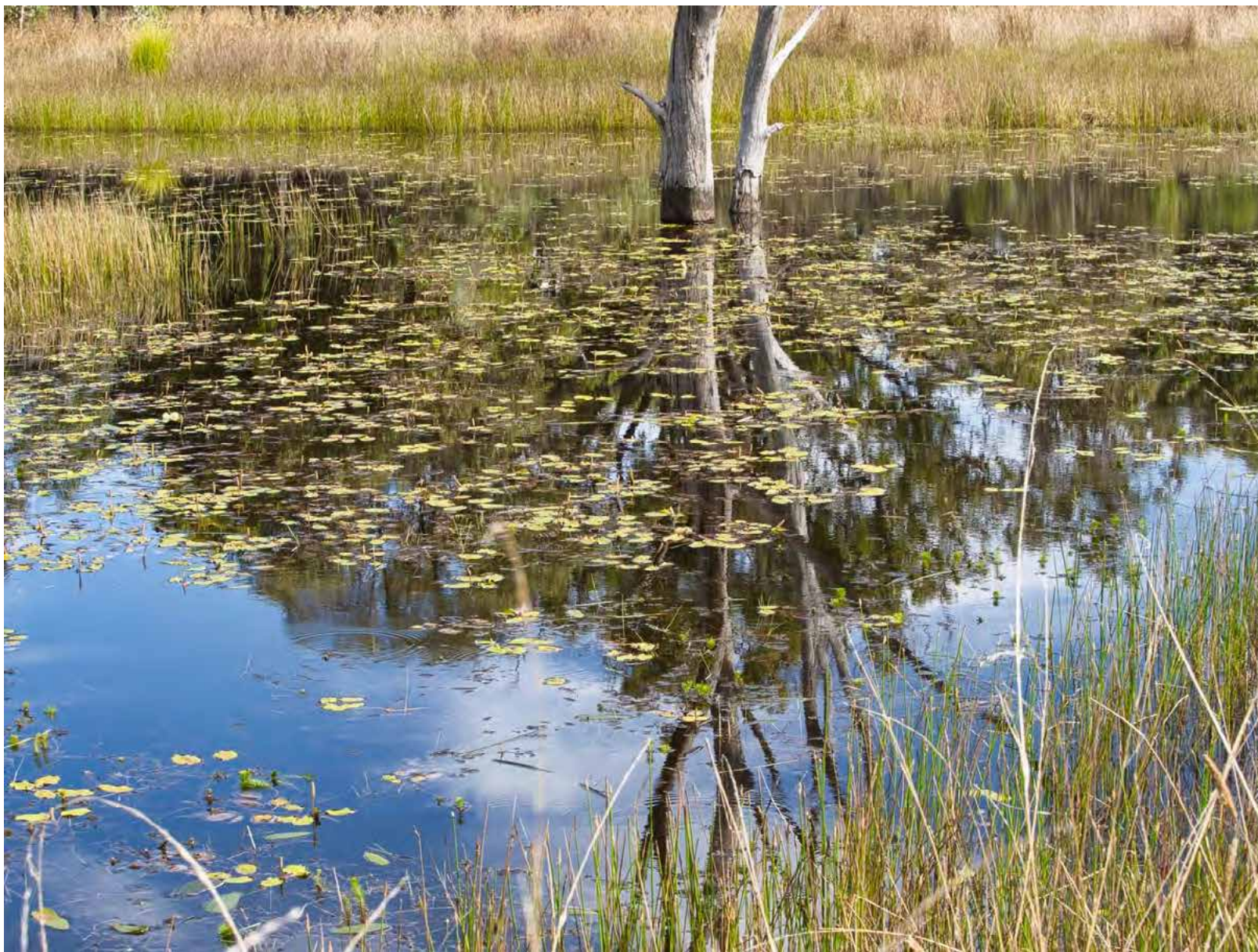
*South Coast
Laurie Westcott*



*South Coast
Laurie Westcott*



*A magnificent Eucalyptus specimen next to Mulligans Flat Nature Reserve. Olympus E-M1 Mk3 iso200 f2.8 1/2000sec
Laurie Westcott*



*Pond reflection, Mulligans Flat NR. Olympus E-M1 mk3 iso200 f/11 1/100sec
Laurie Westcott*



*Mulligans Flat NR. Olympus E-M1 mk3 iso200 f/7.1 1/80sec
Laurie Westcott*



*Cut dead timber in depression converted to B&W, Mulligans Flat NR. Olympus E-M1 mk3 iso 200 f/7.1 1/100sec
Laurie Westcott*



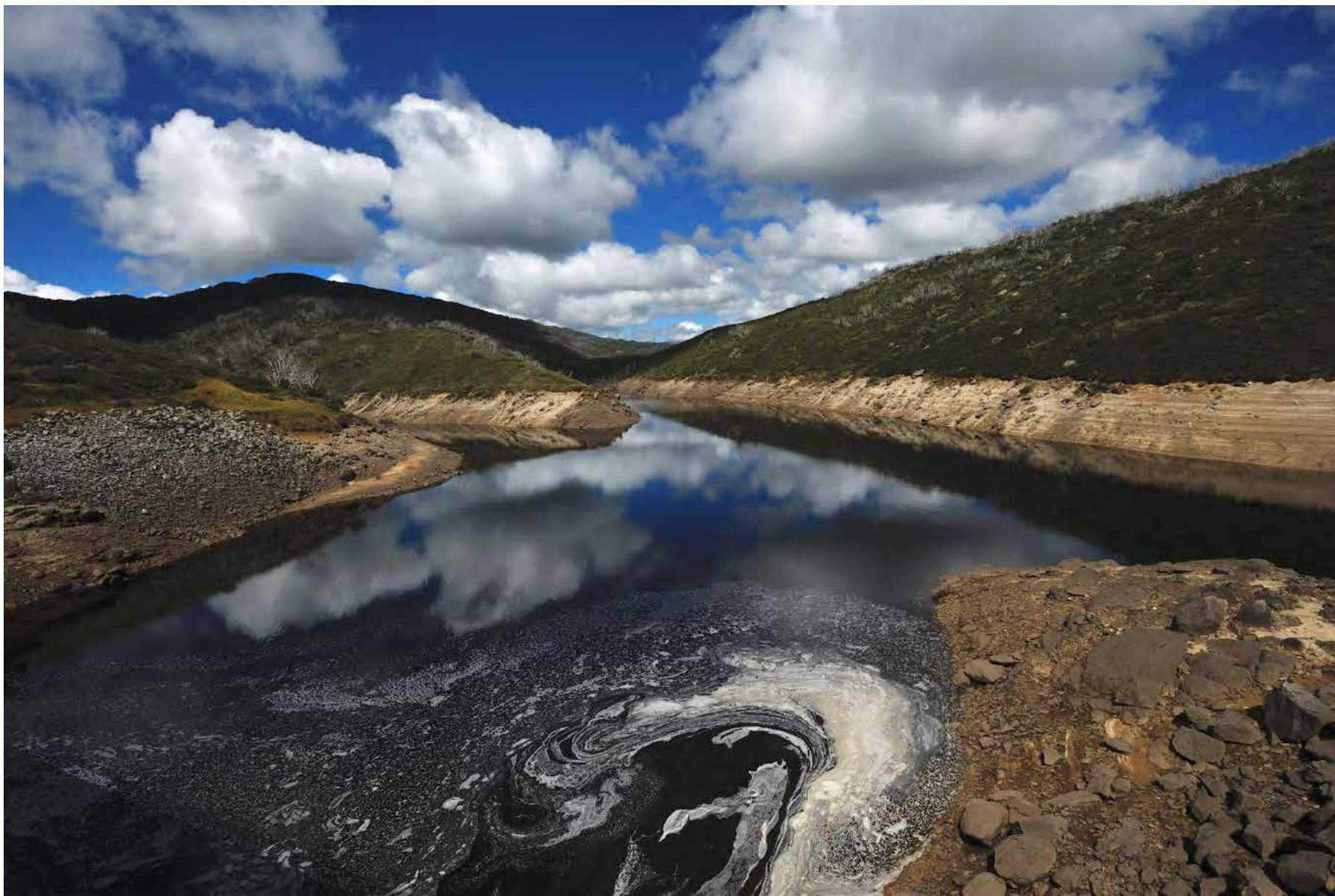
Guthega water drops
Giles West



*Guthega Snowy cloud forest
Giles West*



*Guthega Pondage
Giles West*



*Guthaga Pondage
Giles West*



*Portrait Interest Group
Mark Stevenson*



*Conifers Cottage Nhill
John Mitchell*



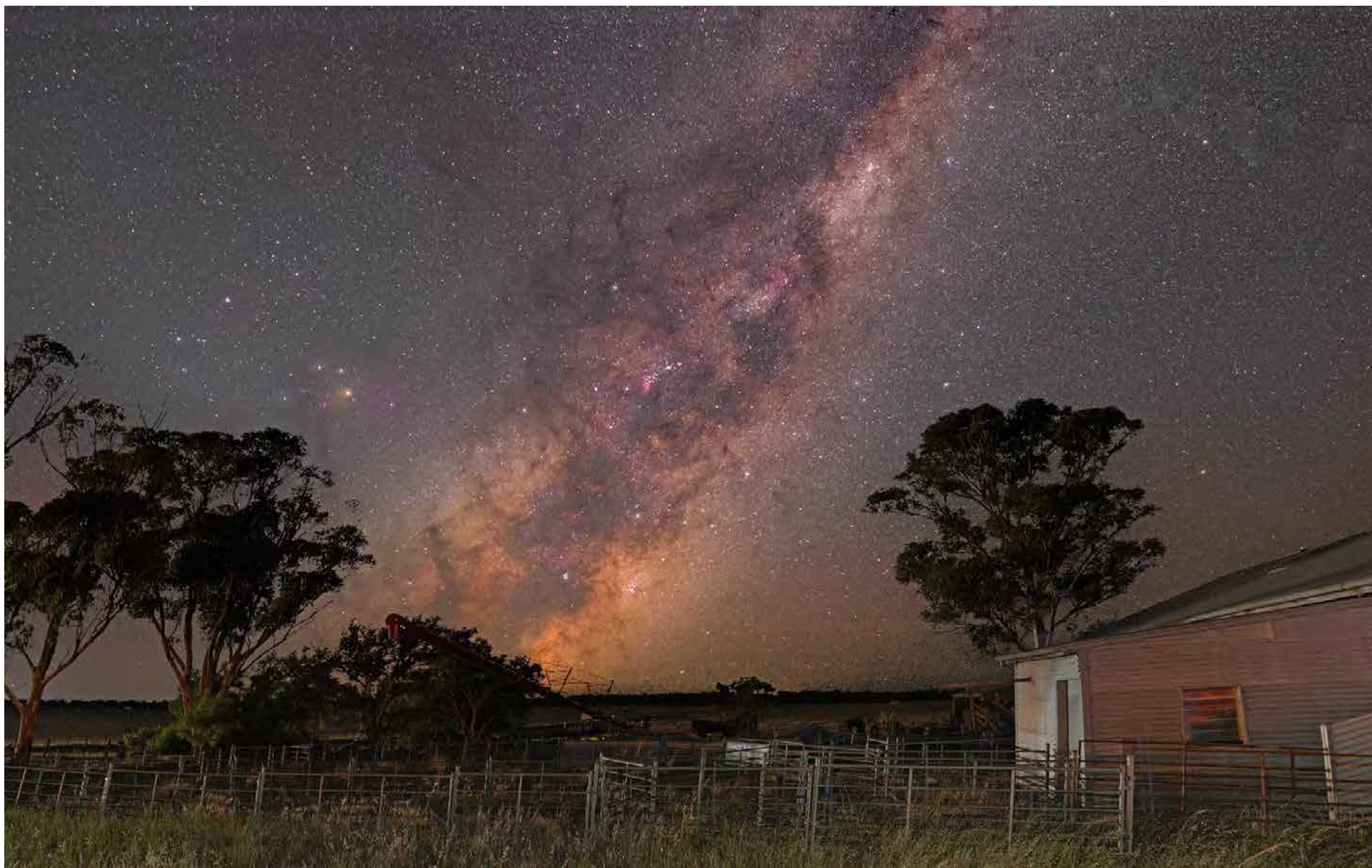
*Conifers tank
John Mitchell*



*Old Austin
John Mitchell*



*Old truck in paddock
John Mitchell*



*Shearing Shed Natimuk Road Horsham
John Mitchell*



*Guthega
Rob Wignall*



Guthega
Rob Wignall



Guthega
Rob Wignall



Walking on water: Australasian Grebe
Alison Milton